

ILKLEY USA SUMMER SCHOOL, 14th July 2015.

**Travelling by Train in the Victorian Era**



ILKLEY USA SUMMER SCHOOL, 14th July 2015.

**Travelling by Train in the Victorian Era**

# The Station Experience







1050.11

322481

northern  
www.northernrail.com









▲ All of Edwardian railway life is here in this 1906 postcard of the Brighton train leaving London







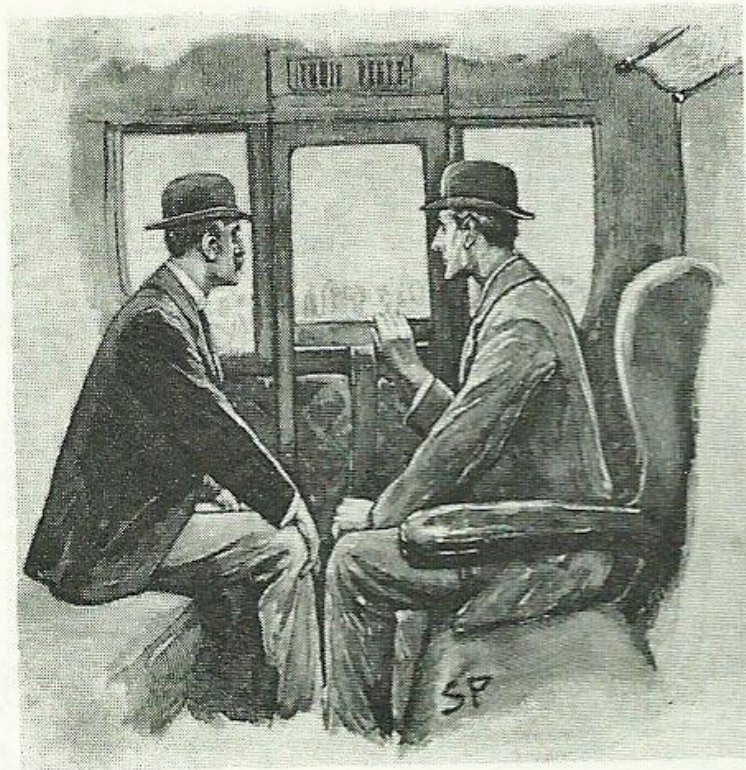


LANCASHIR

1807

L.T.R.

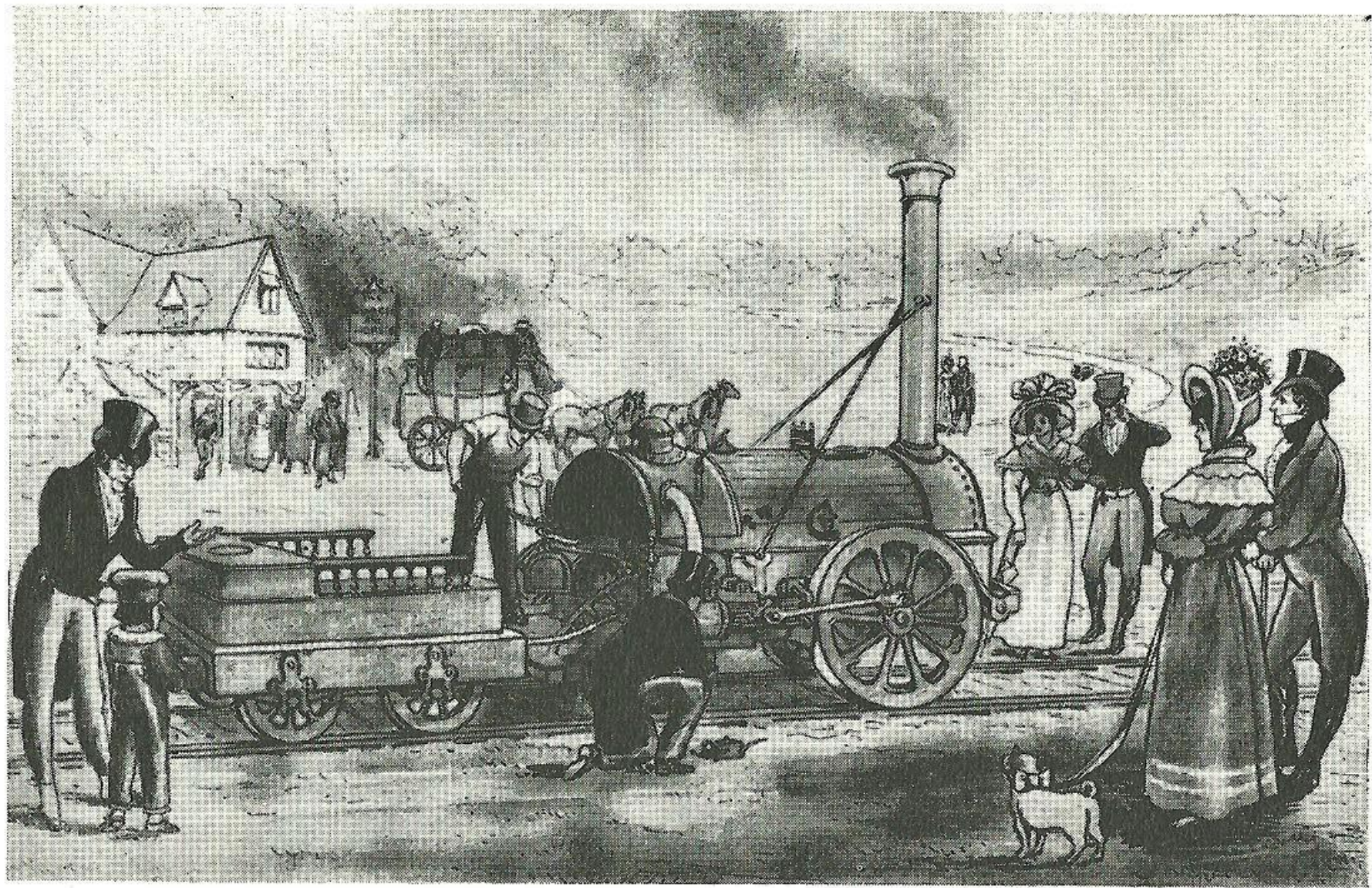




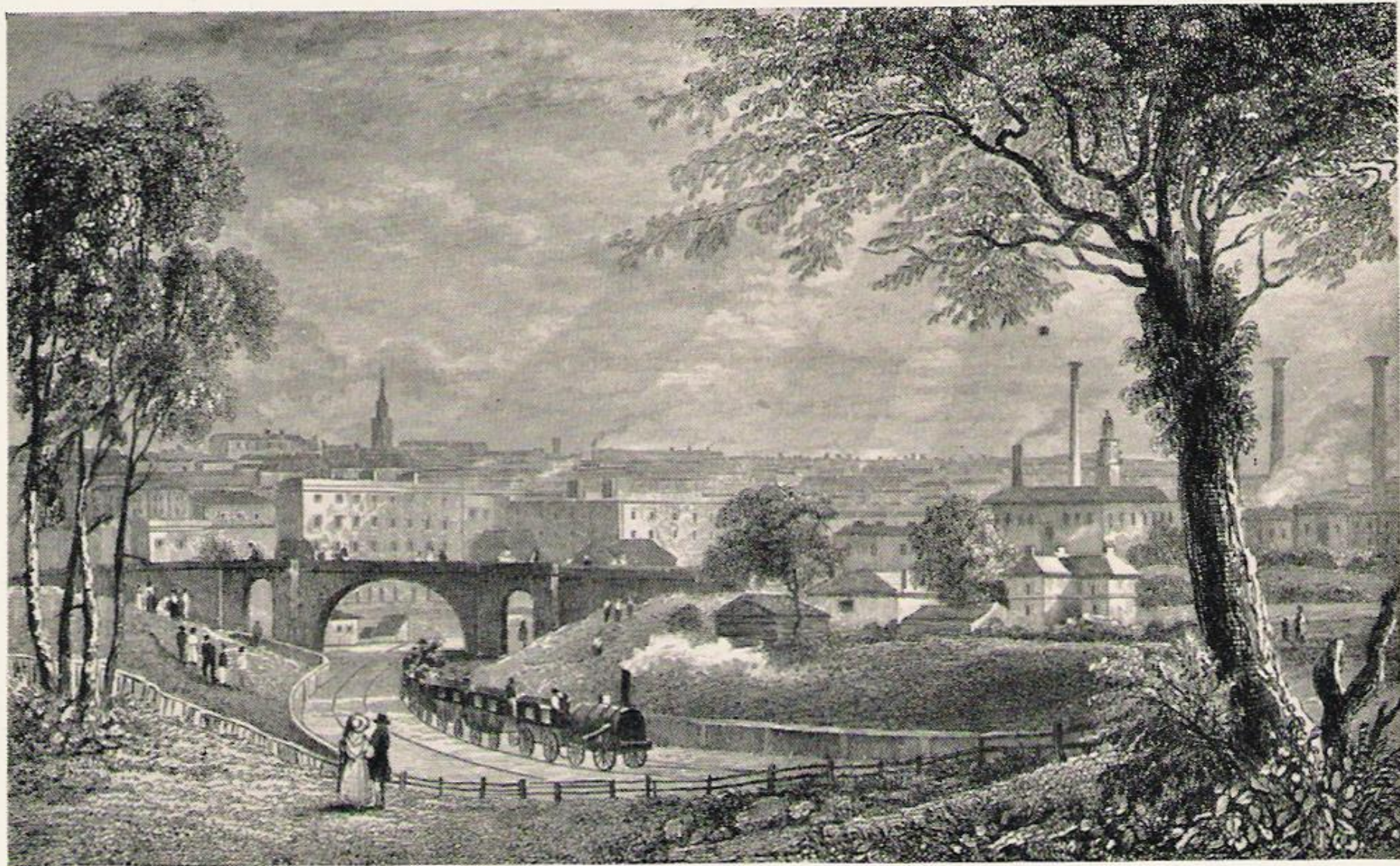
*Above 'The view was sordid enough'.  
One of Sidney Paget's original  
illustrations of Sherlock Holmes and  
Dr Watson. From 'The Strand  
Magazine'.*

*Opposite 'A Mile a Minute'. Everybody  
happy in the second class!*







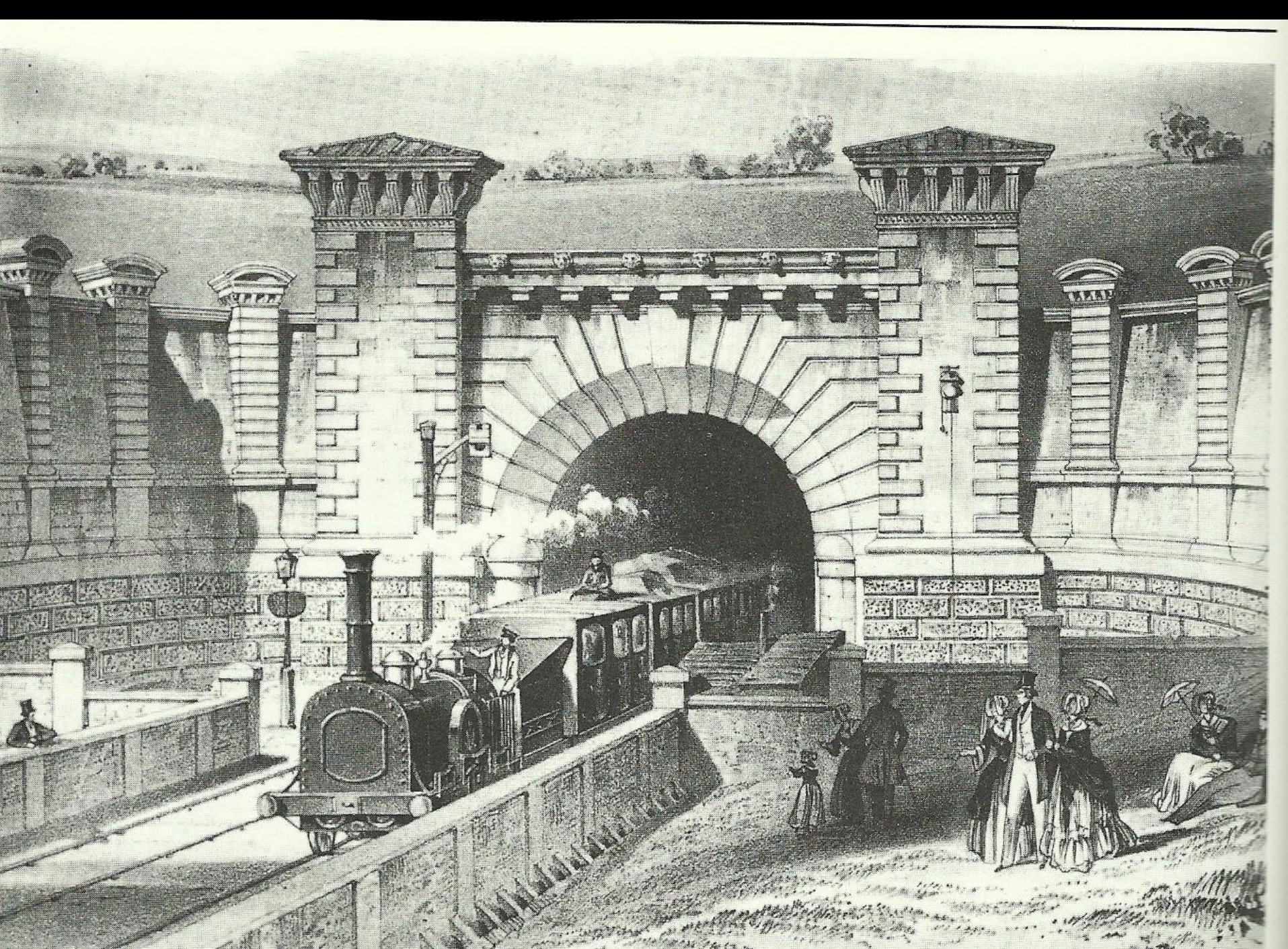


7. *The Birmingham Railway at Chalk Farm Bridge. In prints such as this the public obviously pictured the railways going along something very similar to the existing roads. The twin towers of the engine houses can be seen on the right.*





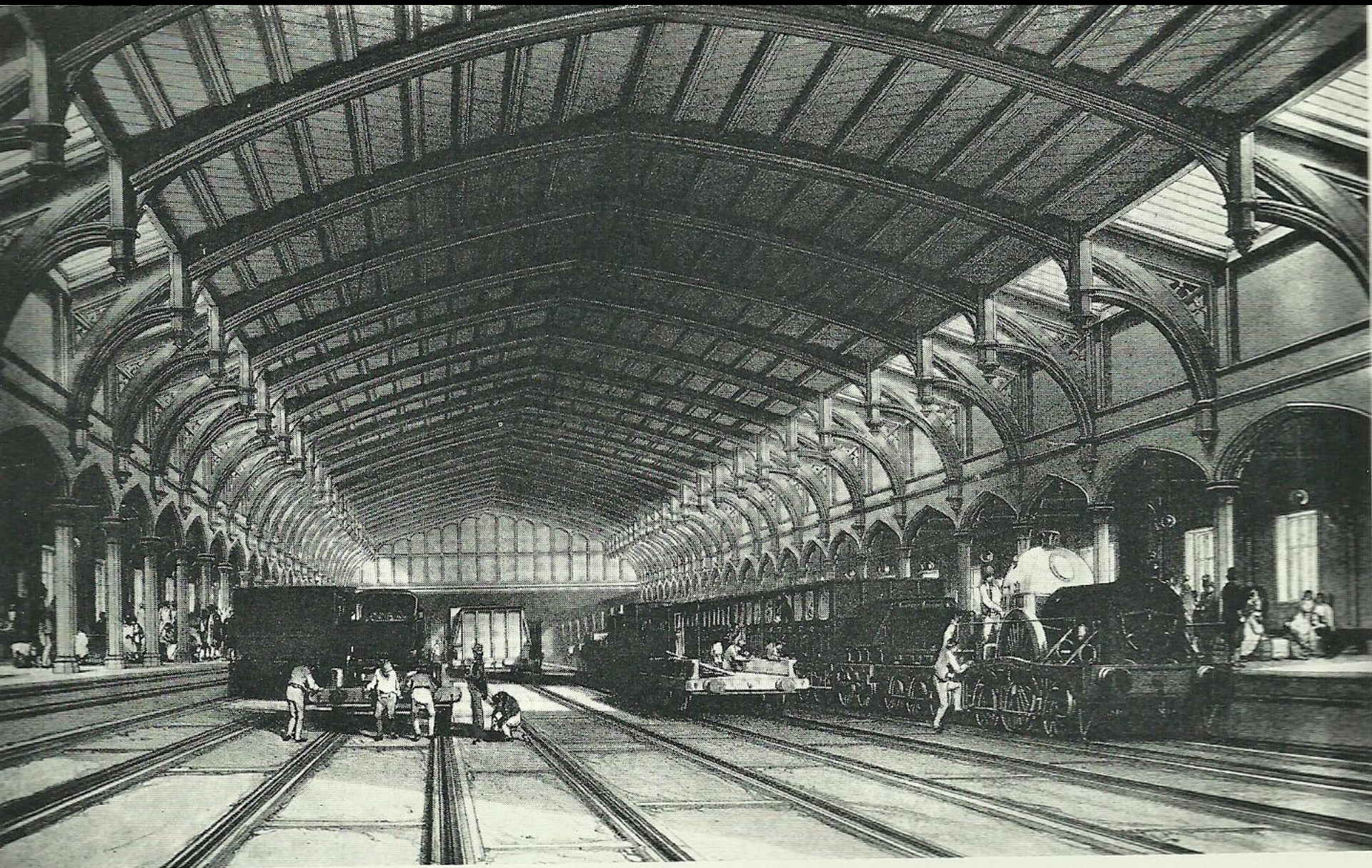










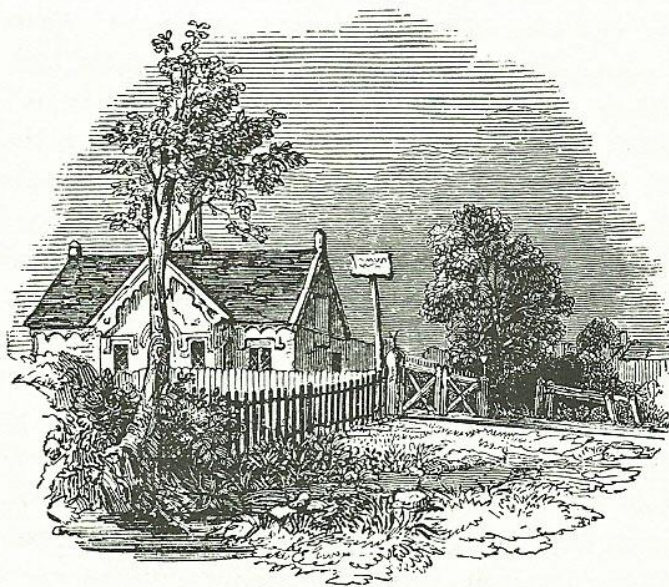


Bristol Station. (*Bourne*)



THE  
NOTTINGHAM AND DERBY  
RAILWAY COMPANION.

BEAUTIFULLY ILLUSTRATED.



Heeston Station, from the Lane.

LONDON :

HAMILTON, ADAMS, AND CO., AND HAYWARD AND MOORE;  
R. ALLEN, NOTTINGHAM; E. ALLEN, LEICESTER; SMITH, PIKE, AND  
WILKINS, DERBY; THOMPSON, TAMWORTH; AND  
SOLD BY ALL BOOKSELLERS.



# GENERAL INSTRUCTIONS

FOR

## RAILWAY TRAVELLERS.

The Doors of the booking offices are closed at the precise times appointed for starting the Trains, and Passengers should be at the intermediate Stations at least ten minutes before the specified times of departure.

It is very desirable that Passengers should have their name and destination stated in full on their luggage, and to mark the number of the carriage on which it is deposited—light luggage may be taken into the carriage. The Companies do not hold themselves responsible for luggage unless booked and paid for according to its value. The weight generally allowed each passenger is about 60lbs for second class, and 100lbs for first class passengers.

Preserve your Ticket until called for by the Companies' servant.

Post Horses may be readily obtained at each terminus, and at most of the principal Stations.

\*.\* Carriage Trucks and Horse Boxes are kept at all the principal Stations, but to prevent disappointment, it is recommended that notice be given the day previous to their being required, and they ought to be at the Station Twenty minutes before the time of starting.

At each terminus Omnibuses, Coaches, and Cabs are generally waiting the arrival of Trains.

Infants in arms, unable to walk, not charged, and children under Ten Years of age only half fare.

Dogs, at a small charge for each, are conveyed in a proper vehicle, but are not allowed to be taken inside the carriages.

Smoking not allowed at the Stations, nor in any of the carriages.

No fees or gratuities are allowed to be received by any of the Companies' servants, but they are strictly enjoined to pay every attention to the convenience of passengers.

Do not lean upon the door of the carriage, nor attempt to get out whilst it is in motion.







# GENERAL INSTRUCTIONS

FOR

## RAILWAY TRAVELLERS.

The Doors of the booking offices are closed at the precise times appointed for starting the Trains, and Passengers should be at the intermediate Stations at least ten minutes before the specified times of departure.

It is very desirable that Passengers should have their name and destination stated in full on their luggage, and to mark the number of the carriage on which it is deposited—light luggage may be taken into the carriage. The Companies do not hold themselves responsible for luggage unless booked and paid for according to its value. The weight generally allowed each passenger is about 60lbs for second class, and 100lbs for first class passengers.

Preserve your Ticket until called for by the Companies' servant.

Post Horses may be readily obtained at each terminus, and at most of the principal Stations.

\*.\* Carriage Trucks and Horse Boxes are kept at all the principal Stations, but to prevent disappointment, it is recommended that notice be given the day previous to their being required, and they ought to be at the Station Twenty minutes before the time of starting.

At each terminus Omnibuses, Coaches, and Cabs are generally waiting the arrival of Trains.

Infants in arms, unable to walk, not charged, and children under Ten Years of age only half fare.

Dogs, at a small charge for each, are conveyed in a proper vehicle, but are not allowed to be taken inside the carriages.

Smoking not allowed at the Stations, nor in any of the carriages.

No fees or gratuities are allowed to be received by any of the Companies' servants, but they are strictly enjoined to pay every attention to the convenience of passengers.

Do not lean upon the door of the carriage, nor attempt to get out whilst it is in motion.





OLD PARTY. "Really, Sir,—I am the Manager of the Line, Sir,—I must inform you that if you persist in Smoking, you will be fined Forty Shillings, Sir."

FAST ETONIAN. "Well, old Boy, I must have my Smoke, so you may as well take your Forty Shillings now."

From *Punch*, 28 September 1861—*Mary Evans Picture Library*.



# GENERAL INSTRUCTIONS

FOR

## RAILWAY TRAVELLERS.

The Doors of the booking offices are closed at the precise times appointed for starting the Trains, and Passengers should be at the intermediate Stations at least ten minutes before the specified times of departure.

It is very desirable that Passengers should have their name and destination stated in full on their luggage, and to mark the number of the carriage on which it is deposited—light luggage may be taken into the carriage. The Companies do not hold themselves responsible for luggage unless booked and paid for according to its value. The weight generally allowed each passenger is about 60lbs for second class, and 100lbs for first class passengers.

Preserve your Ticket until called for by the Companies' servant.

Post Horses may be readily obtained at each terminus, and at most of the principal Stations.

\*\* Carriage Trucks and Horse Boxes are kept at all the principal Stations, but to prevent disappointment, it is recommended that notice be given the day previous to their being required, and they ought to be at the Station Twenty minutes before the time of starting.

At each terminus Omnibuses, Coaches, and Cabs are generally waiting the arrival of Trains.

Infants in arms, unable to walk, not charged, and children under Ten Years of age only half fare.

Dogs, at a small charge for each, are conveyed in a proper vehicle, but are not allowed to be taken inside the carriages.

Smoking not allowed at the Stations, nor in any of the carriages.

No fees or gratuities are allowed to be received by any of the Companies' servants, but they are strictly enjoined to pay every attention to the convenience of passengers.

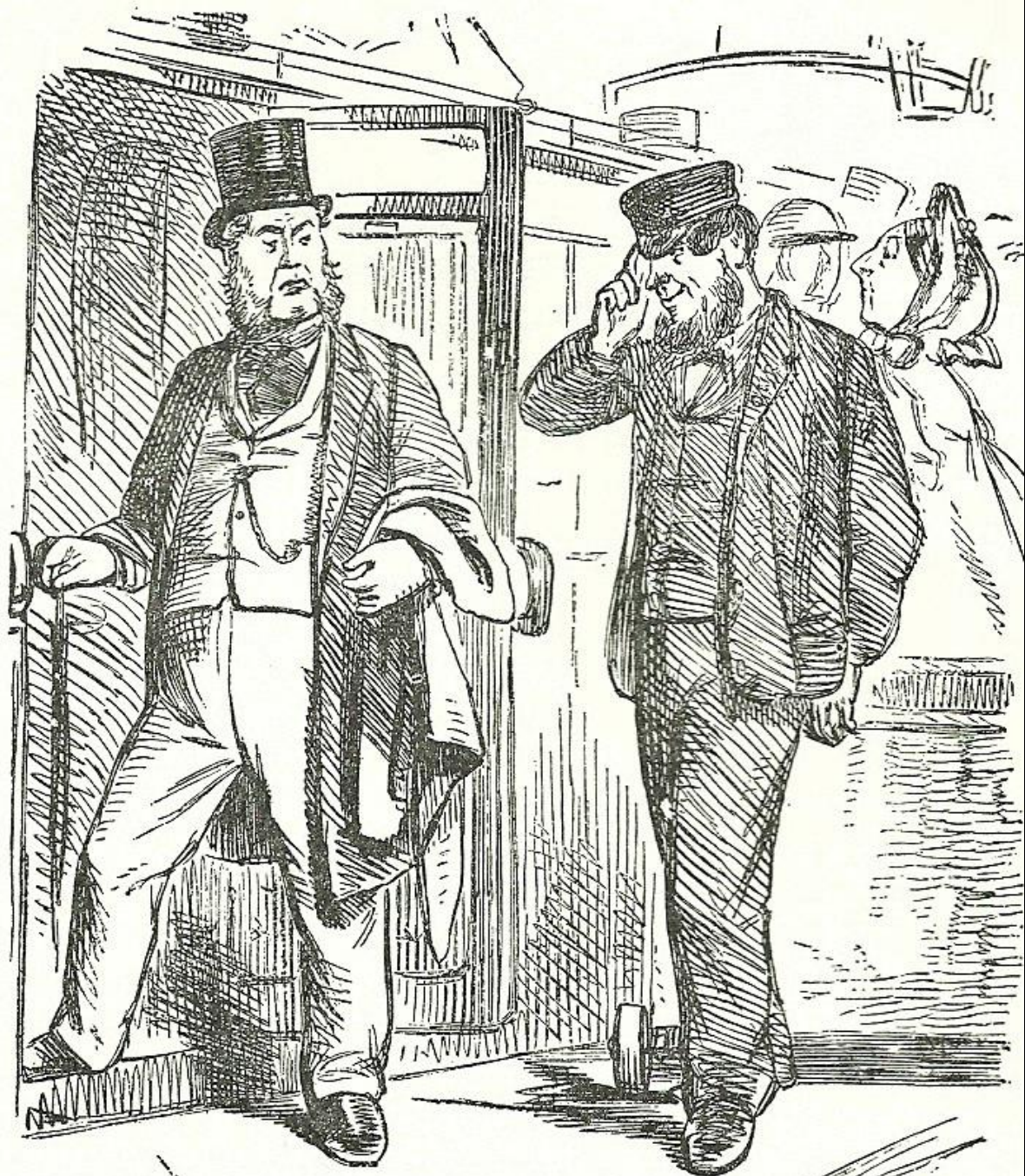
Do not lean upon the door of the carriage, nor attempt to get out whilst it is in motion.



PASSENGER. "Well, you say you've put all my Luggage safe, what are you waiting for?—I thought you were forbidden to take Money!"

PORTER. "So we is, Sir. We never 'takes' it—it's a 'given to us!"

From *Punch*, 14  
September 1861—  
*Mary Evans Picture  
Library.*











railway station from the start, providing not only booking-offices but



## TABLE OF FARES.

STATIONS.	BIRMING.			HAMPTON			COLESHILL.			KINGSBURY.			TAMWTH.			WALTON.			BURTON.			WILLINGTON.		
	CLASS.			CLASS.			CLASS.			CLASS.			CLASS.			CLASS.			CLASS.					
	1st.	2nd.	3rd.	1st.	2nd.	3rd.	1st.	2nd.	3rd.	1st.	2nd.	3rd.	1st.	2nd.	3rd.	1st.	2nd.	3rd.	1st.	2nd.	3rd.	1st.	2nd.	3rd.
	<i>s.d.</i>	<i>s.d.</i>	<i>s.d.</i>	<i>s.d.</i>	<i>s.d.</i>	<i>s.d.</i>	<i>s.d.</i>	<i>s.d.</i>	<i>s.d.</i>	<i>s.d.</i>	<i>s.d.</i>	<i>s.d.</i>	<i>s.d.</i>	<i>s.d.</i>	<i>s.d.</i>	<i>s.d.</i>	<i>s.d.</i>	<i>s.d.</i>	<i>s.d.</i>	<i>s.d.</i>	<i>s.d.</i>	<i>s.d.</i>	<i>s.d.</i>	<i>s.d.</i>
HAMPTON ..	3 0	2 6	2 0																					
COLESHILL ....	3 0	2 6	2 0	1 0	0 9	0 6																		
KINGSBURY....	3 0	2 6	2 0	2 0	1 6	1 0	1 0	0 9	0 6															
TAMWORTH ..	4 0	3 0	2 6	3 0	2 0	1 6	2 0	1 6	1 0	1 0	0 9	0 6												
WALTON .....	6 0	4 6	3 6	4 0	3 0	2 0	4 0	2 6	1 9	3 0	2 0	1 6	2 0	1 6	1 0									
BURTON ....	7 0	5 0	4 0	5 0	4 0	3 0	4 6	3 0	2 0	4 0	3 0	2 0	3 0	2 0	1 6	1 0	0 9	0 6						
WILLINGTON ..	8 0	6 0	4 6	6 0	4 6	3 6	5 0	4 0	3 0	5 0	4 0	3 0	4 0	3 0	2 0	2 0	1 6	1 0	1 0	0 9	0 6			
DERBY .....	10 0	7 0	5 0	8 0	6 0	4 6	7 0	5 0	4 0	7 0	5 0	4 0	6 0	4 6	3 6	4 0	3 0	2 0	3 0	2 0	1 6	2 0	1 6	1 0

MIDLAND COUNTIES' RAILWAY.



# DERBY AND BIRMINGHAM JUNCTION

## RAILWAY TIME TABLES.

DERBY TO BIRM. & LONDON.	Mixed.	1st & 2nd Class Carriages.	1st & 2nd Class Carriages.	Mixed.	1st & 2nd Class Carriages.	SUNDAY TRAINS.		
						Mixed.	Mixed.	1st & 2nd Class Carriages.
STATIONS.								
	h. m.	h. m.	h. m.	h. m.	h. m.	h. m.	h. m.	h. m.
DERBY .....	8 0	11 30	2 15	4 15	9 0	8 0	5 30	9 0
WILLINGTON .....	8 12	11 41		4 27		8 12	5 42	
BURTON-ON-TRENT .....	8 25	11 53	2 38	4 40	9 23	8 25	5 55	9 25
WALTON .....	8 44	12 10		4 59		8 44	6 14	
TAMWORTH .....	9 7	12 32	3 17	5 22	10 7	9 7	6 37	10 7
KINGSBURY .....	9 26	12 49		5 41		9 26	6 56	
COLESHILL .....	9 37	12 59		5 52		9 37	7 7	
HAMPTON .....	9 55	1 15	4 0	6 10	10 55	9 55	7 25	10 55
BIRMINGHAM .....	10 30	1 45	4 30	6 40	11 30	10 30	8 0	11 30
LONDON .....	3 30	6 45	9 30	11 30				5 30

### FARES.

Private Carriages between Birmingham and Derby, £1. 4s. each.—With two wheels, when two Carriages are placed on one truck, 18s. each.

One Horse, between Birmingham and Derby, 18s.—Every additional Horse, 13s.

Carriages and Horses between Birmingham and Derby, under twenty miles, half-price.—Twenty to thirty miles, two-thirds price.—Exceeding thirty miles, the whole fare.

Private Carriages between London and Derby, £4. 10s. each.—With two wheels, when two Carriages are placed on one truck, £3. 5s. each.

One Horse between London and Derby, £3.—For every additional Horse, £2. 15s.

Passengers in or on Private Carriages, pay Second Class Fares.—Children under 10 years of age, half-price.

LONDON & BIRM. TO DERBY.	Mixed.	1st & 2nd Class Carriages.	1st & 2nd Class Carriages.	Mixed.	1st & 2nd Class Carriages.	SUNDAY TRAINS.		
						Mixed.	Mixed.	1st & 2nd Class Carriages.
	h. m.	h. m.	h. m.	h. m.	h. m.	h. m.	h. m.	h. m.
LONDON .....		6 0	8 45	1 0	8 30			8 30
BIRMINGHAM .....	6 30	10 30	1 0	5 45	2 30	7 0	5 30	2 30
HAMPTON .....	6 50	10 50	1 20	5 5	2 50	7 20	5 50	2 50
COLESHILL .....	7 15		1 45	6 30		7 40	6 10	
KINGSBURY .....	7 26		1 56	6 41		7 55	6 25	
TAMWORTH .....	7 43	11 35	2 13	6 58	3 43	8 10	6 40	3 43
WALTON .....	8 8		2 38	7 23		8 35	7 5	
BURTON-ON-TRENT .....	8 25	12 12	2 55	7 40	4 25	8 52	7 22	4 25
WILLINGTON .....	8 42		3 12	7 57		9 10	7 40	
DERBY .....	9 0	12 45	3 30	8 15	5 0	9 30	8 0	5 0

### BIRMINGHAM AND DERBY RAILWAY.

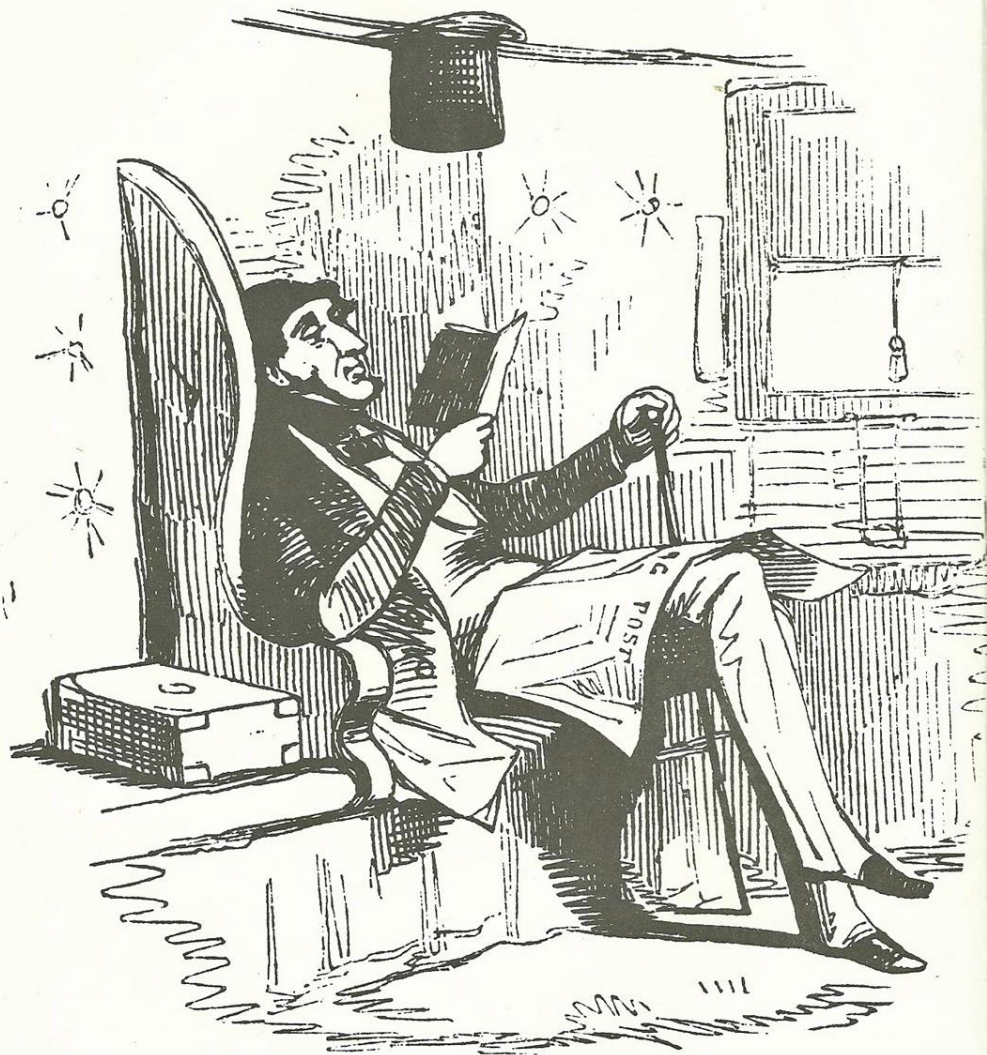
The Directors give Notice, that having to meet the Trains of the London and Birmingham, and Midland Counties' Railway Companies, no longer stoppage at any Station will take place than the Business of the Train requires. Passengers are therefore requested to be at the Station ten minutes before the times advertised for starting. Carriages and Horses must be at the Station at least a quarter of an hour before.



# THE BUBBLES BLOWN.

*Flight the Second.*

THE FIRST-CLASS PASSENGER.



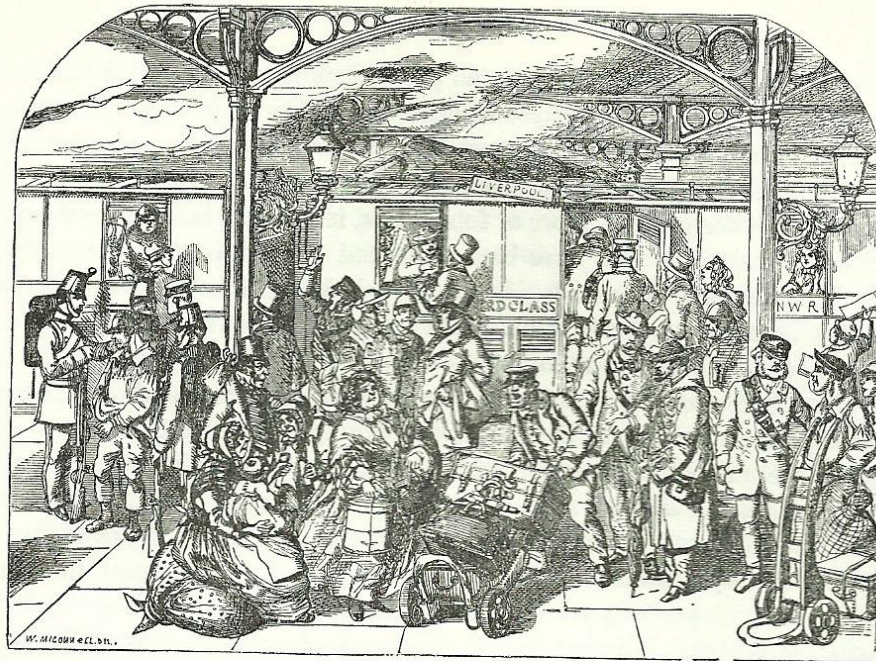
The first-class passenger 'keeps himself to himself, and seldom speaks except to the guard.'



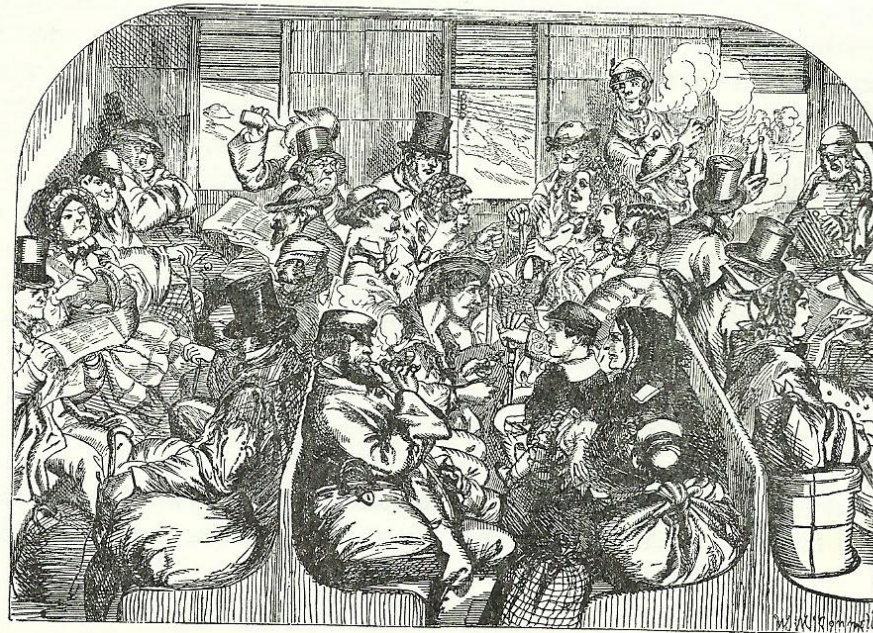


The second-class passenger 'Is always anxious to tell you though he travels 'second', there is really no difference between that and the third-class that he could ever see' From *The Comic Bradshaw* by Angus B Reach, 1848. National Railway Museum, York





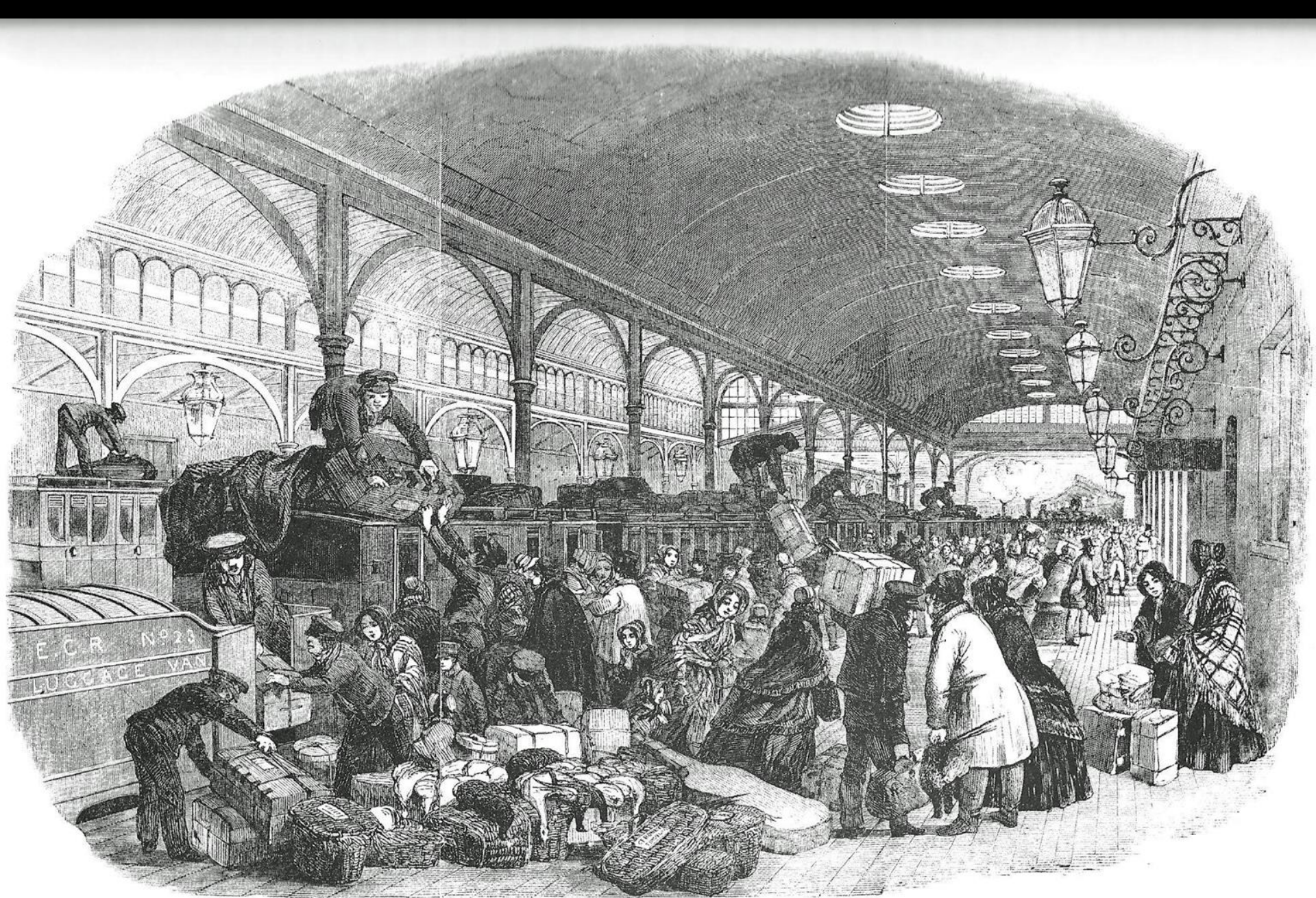
Parliamentary train: (above) Platform of the London and North-Western Railway, Euston Station, (below) Interior of a third class carriage. From G. A. Sala, *Twice Round the Clock* (1858)—Mary Evans Picture Library.









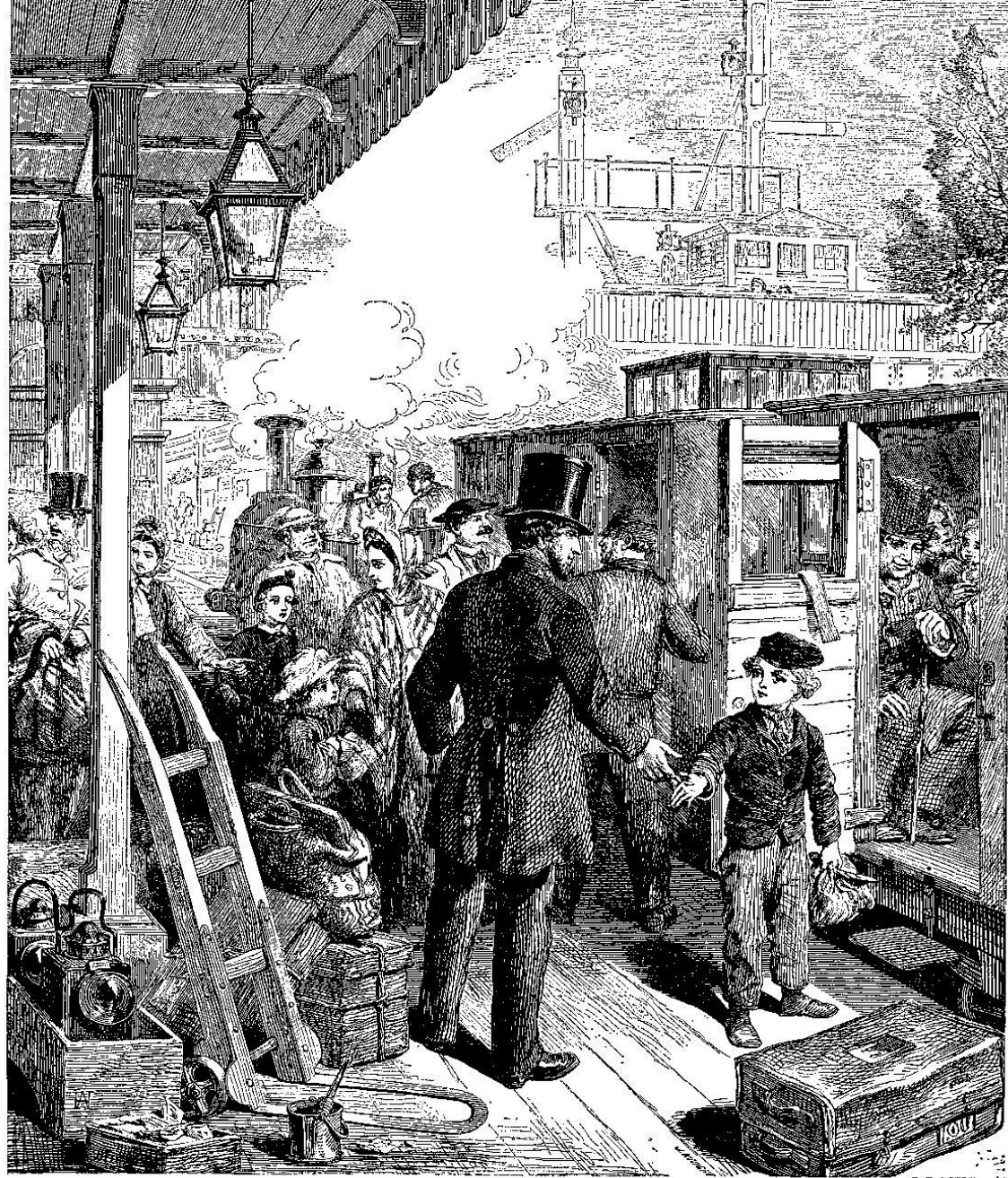


Arrival of Christmas Train, Eastern Counties Railway - Drawn by Duncan [ILN DEC 21 1850]



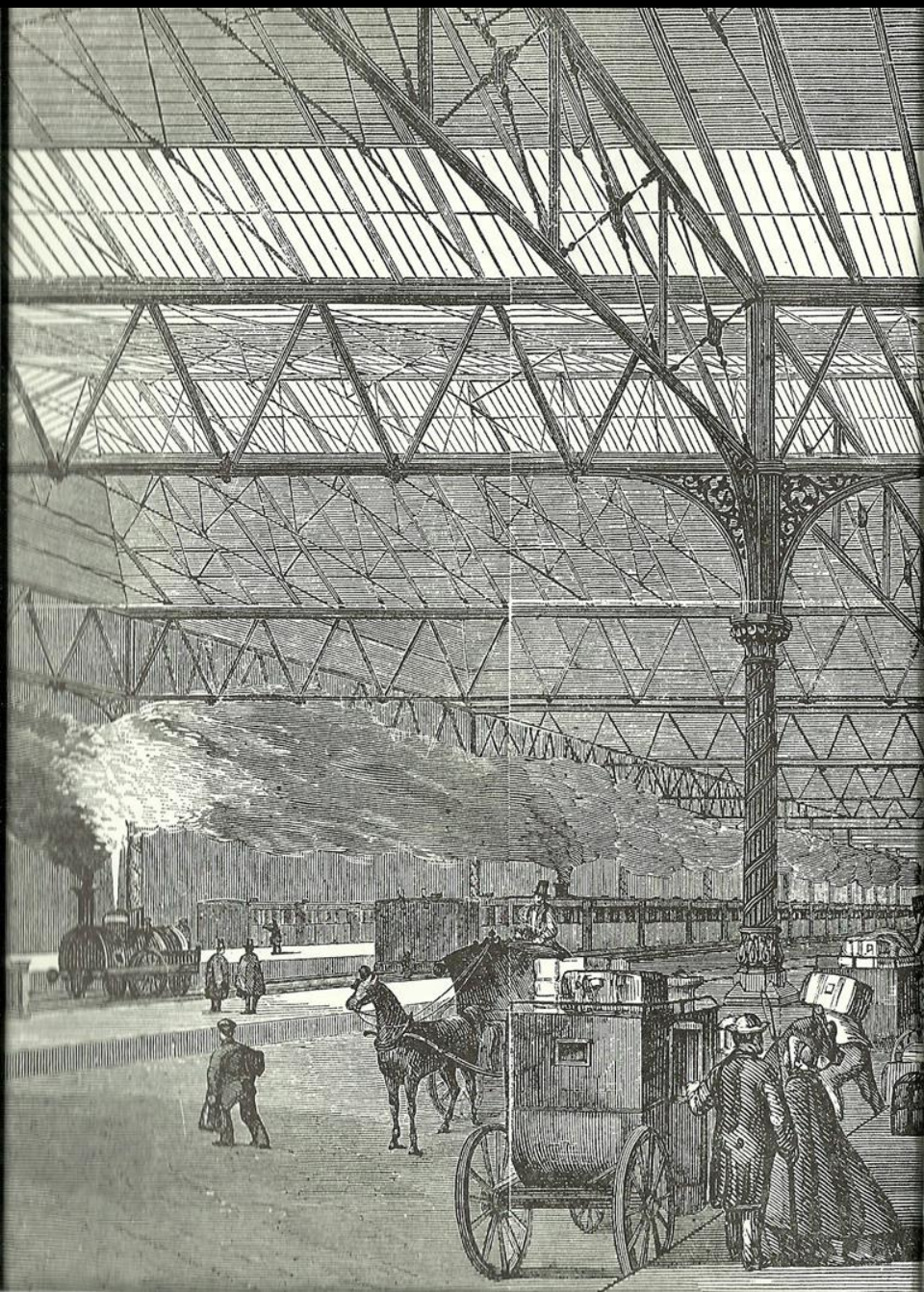






The Railway Station; or, the Power of Kind Words by J. Anelay. From *The British Workman*, 1864—*Mary Evans Picture Library*.































*Scene for Mrs. Weston*



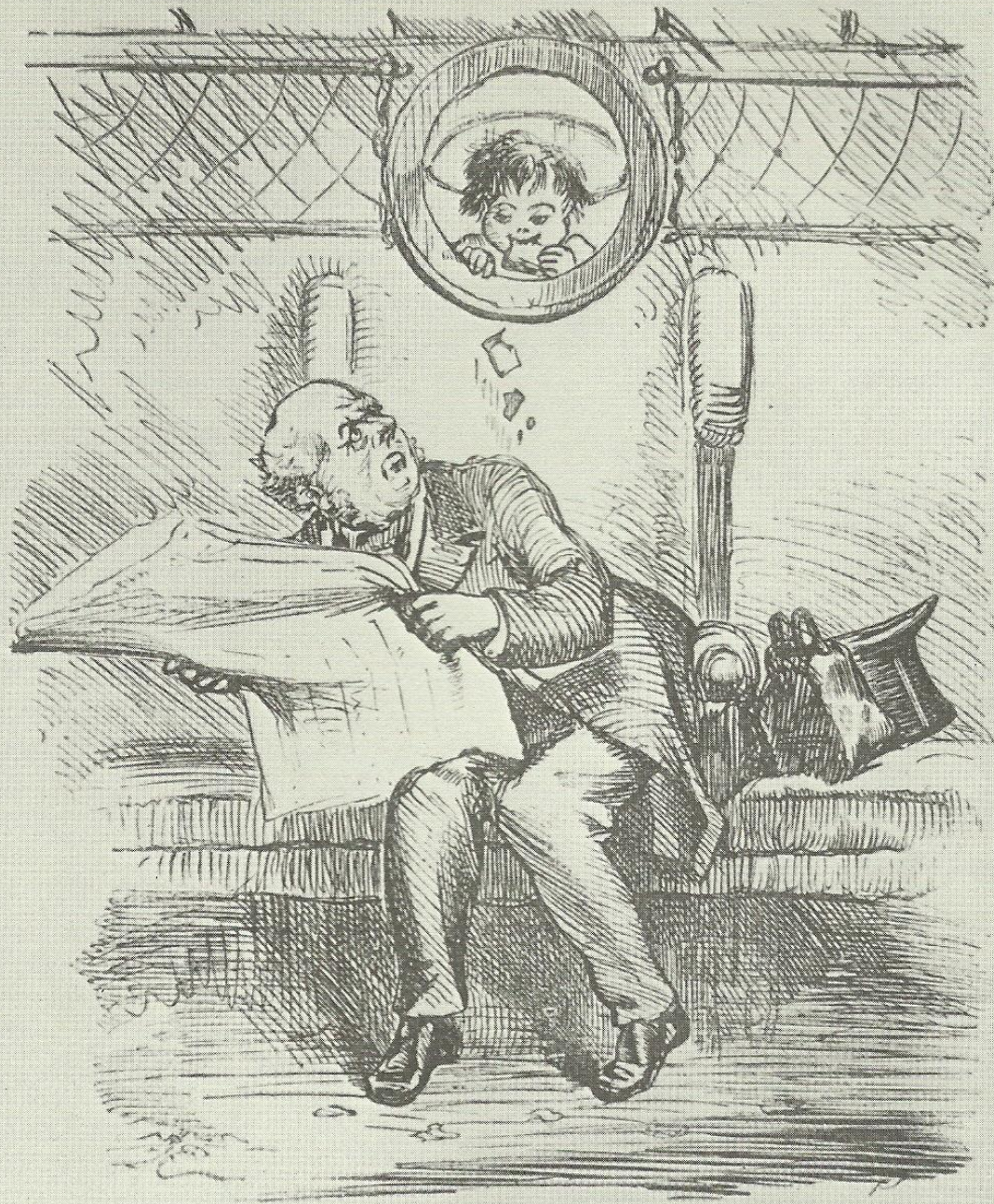




### CONDESCENDING.

*Master Tom (going back to School, to Fellow Passenger).* "IF YOU'D LIKE TO SMOKE, YOU KNOW, GOV'NOUR, DON'T YOU MIND ME, I RATHER LIKE IT!"





SHOWING WHAT A WONDERFUL IMPROVEMENT THE HOLES IN THE RAILWAY CARRIAGES ARE, PARTICULARLY DURING THE HOLIDAYS.





*"I wish they'd have their Board Meetings when they GET to Town!"*



