

150 **UNDERGROUND**

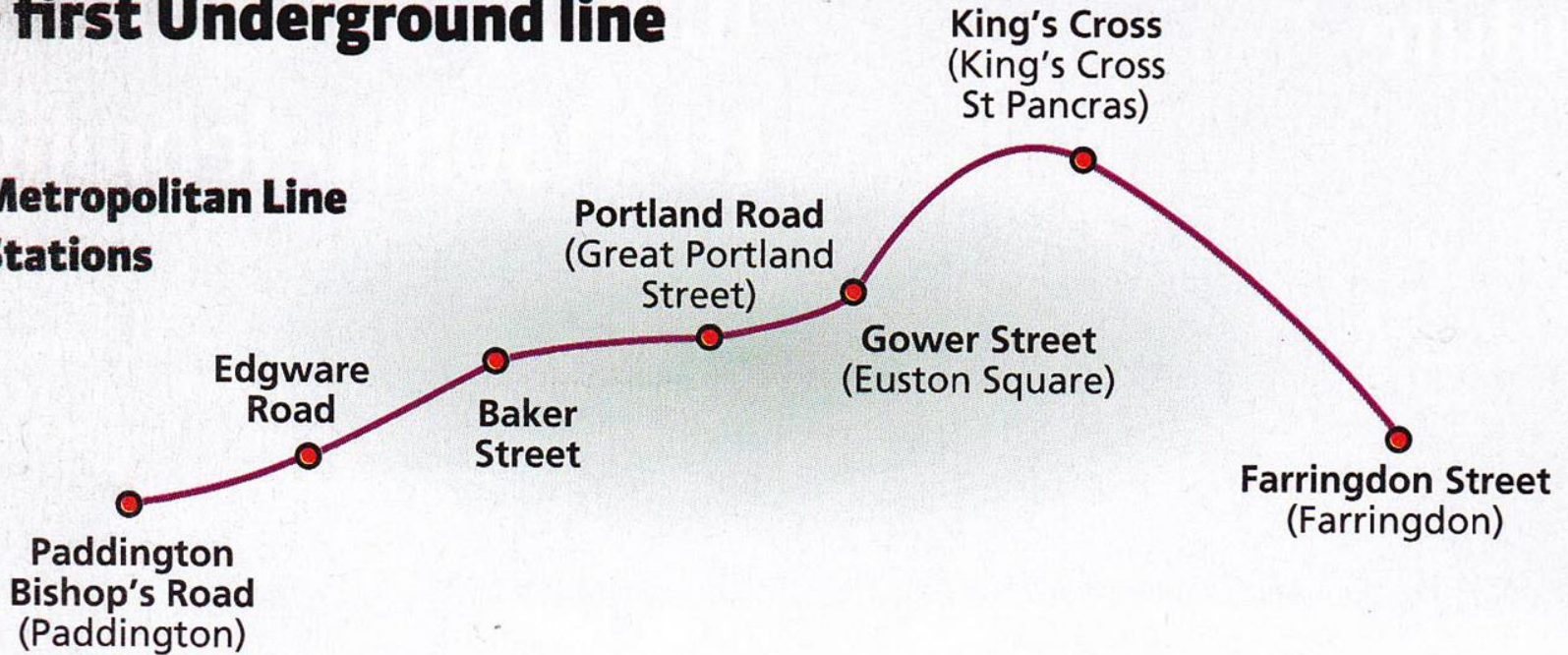
KEEPING LONDON MOVING SINCE 1863

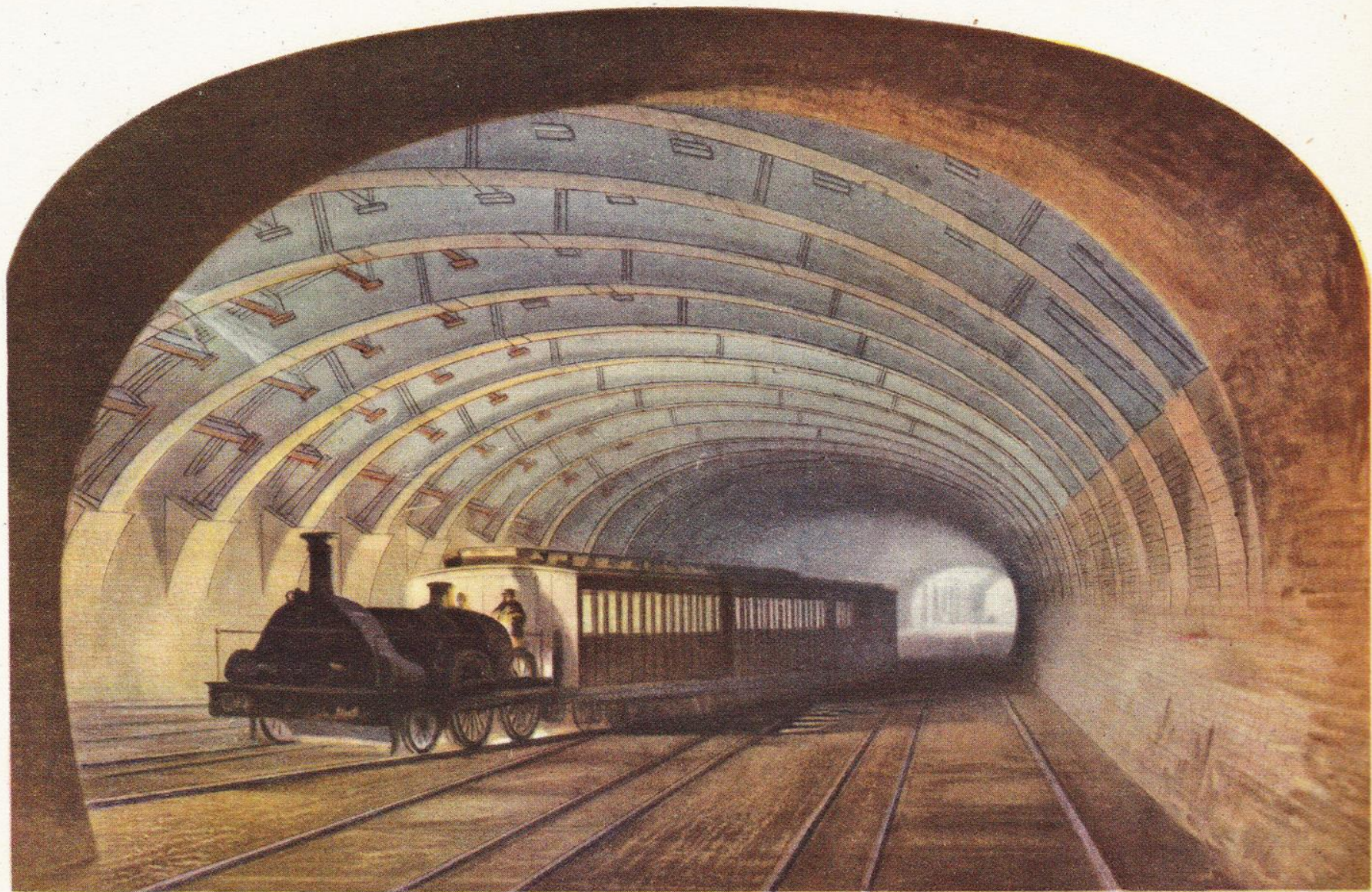
The first Underground line

Key

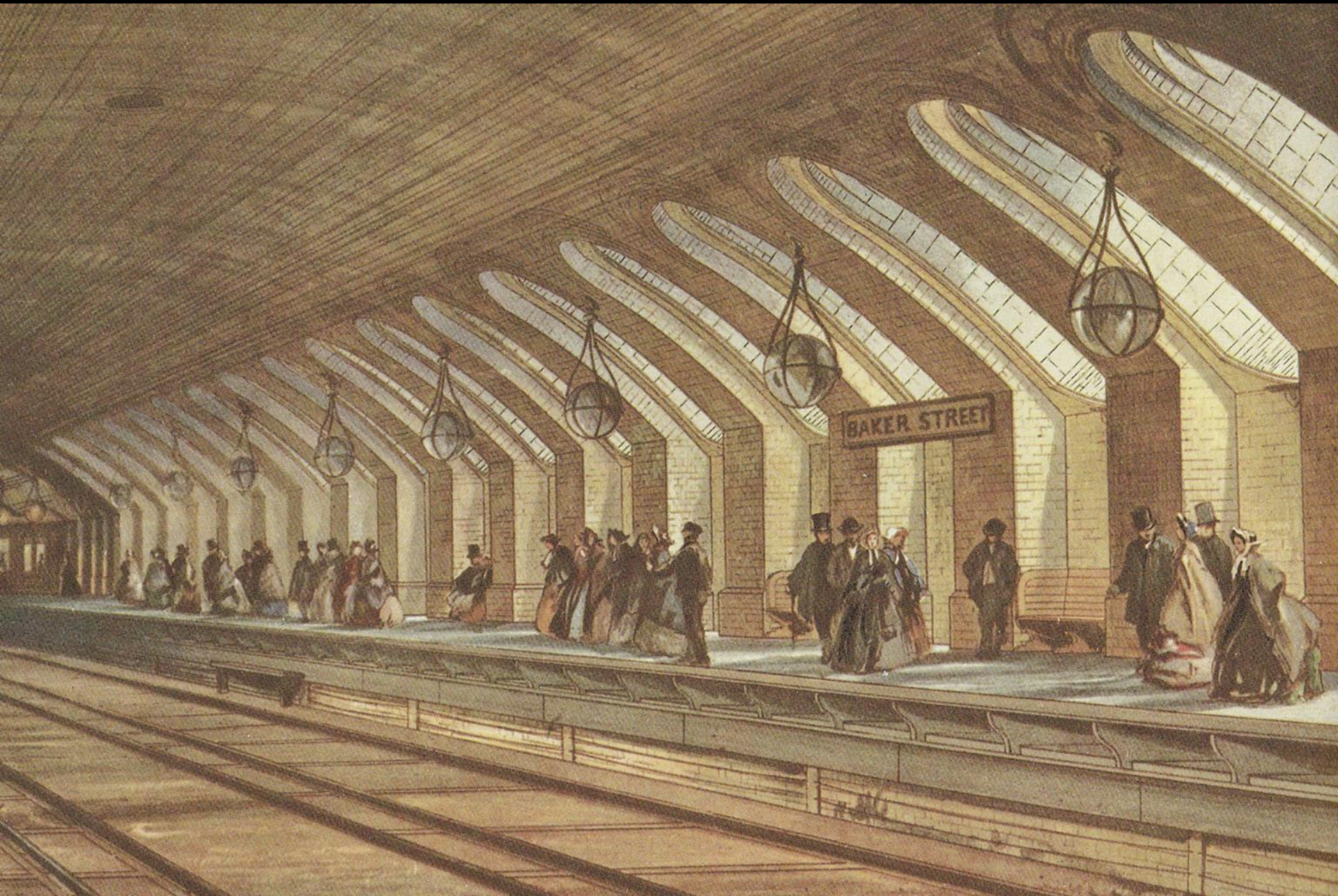
— Metropolitan Line

● Stations



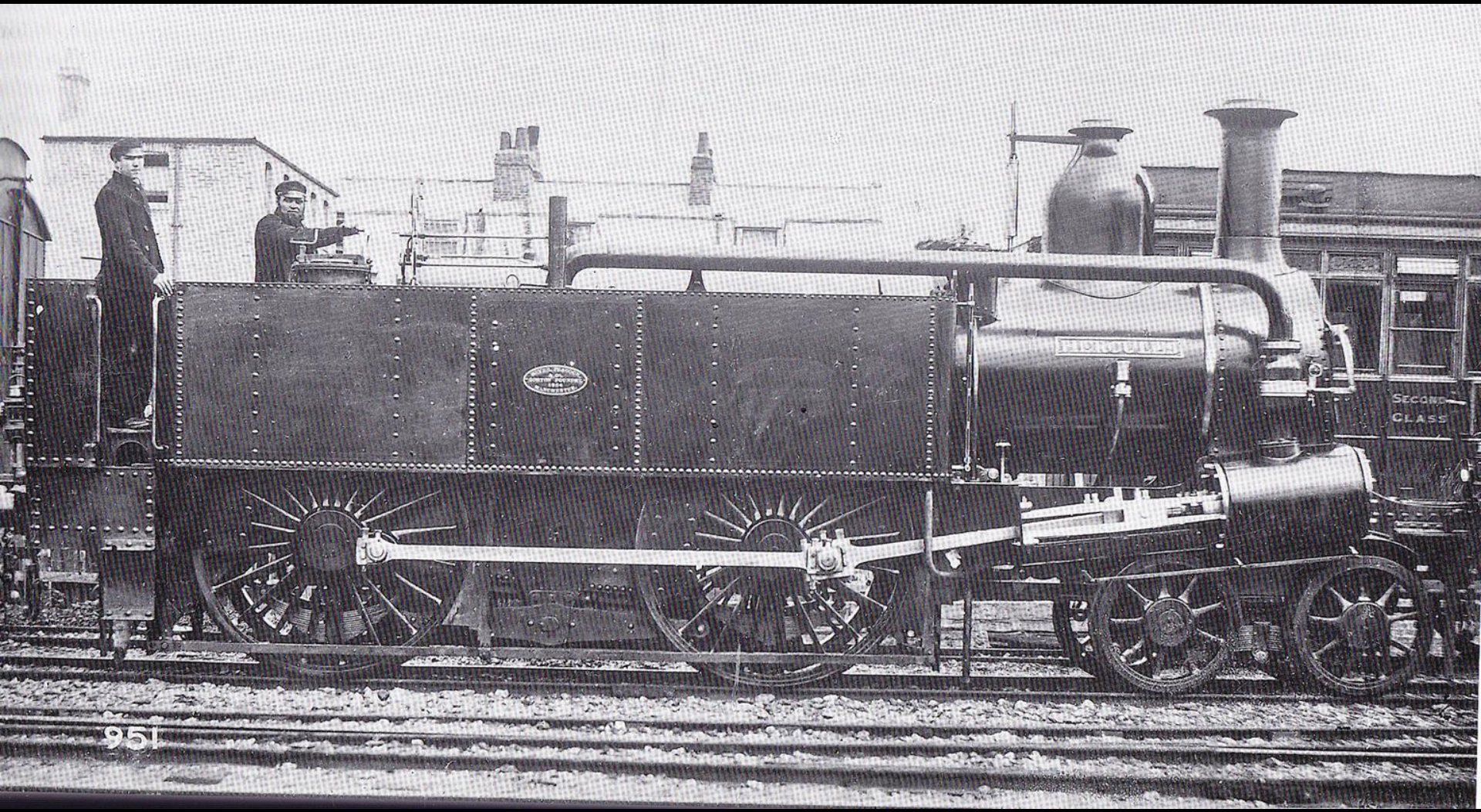


THE METROPOLITAN RAILWAY NEAR PADDINGTON, 1863
Lithograph printed in colours





Weasden-built 'E' class 0-4-4T 'Met1' drifts into Acton with an empty stock move from Ruislip to Northfields on July 26 ahead of the London Transport Museum's repeat series of heritage specials on the Underground. On the rear of the wooden-bodied Metropolitan carriages are Bo-Bo electric No. 12 Sarah Siddons and 4575 class small 'Prairie' No. 5521. The latter is a standby to 'Met1' on the August 2 and 9 Hammersmith 150 specials, but is due to run to Chesham on August 16-17. PETER ZABEK

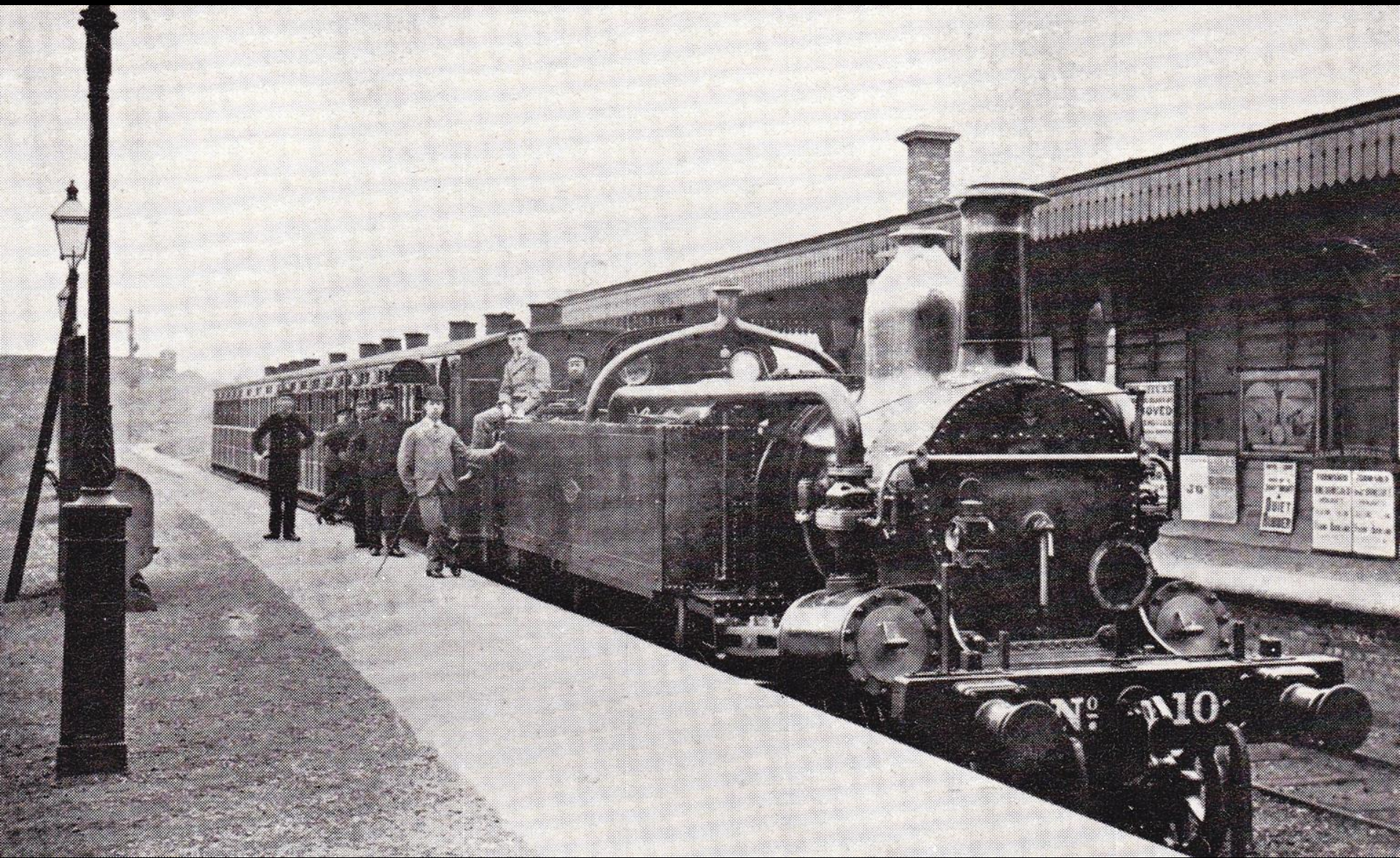


951







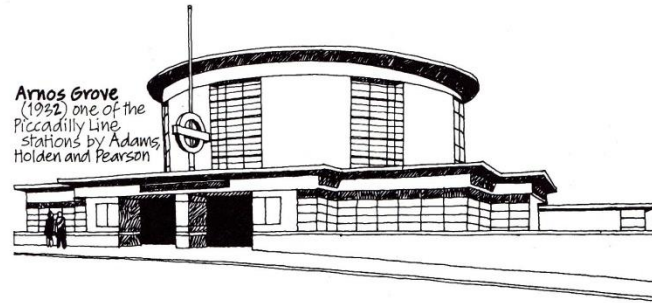




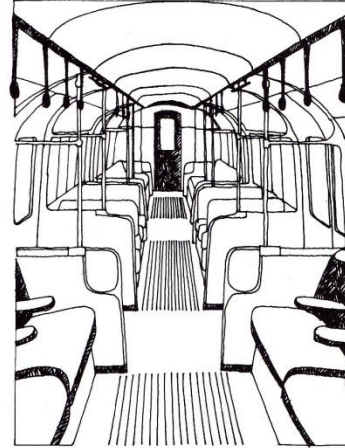


London Transport

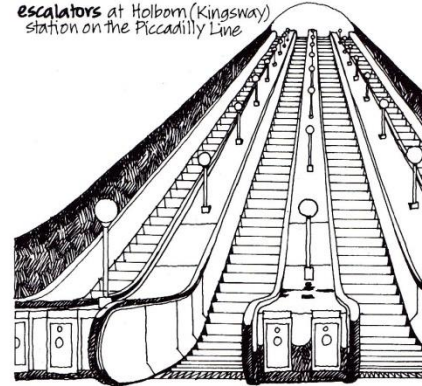
Arnos Grove
(1932) one of the
Piccadilly Line
stations by Adams,
Holden and Pearson



'Tube' rolling stock
(1937) -
interior view



escalators at Holborn (Kingsway)
station on the Piccadilly Line



London transport symbol
and Gill Sans typeface specially
designed for the company

PICCADILLY

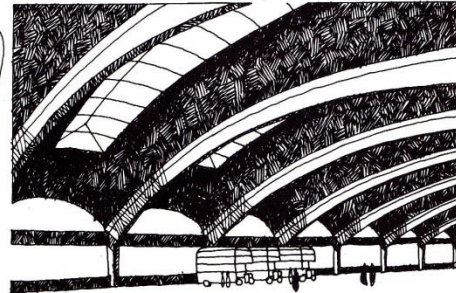
modified version of the
STL-type bus originally
designed in 1933



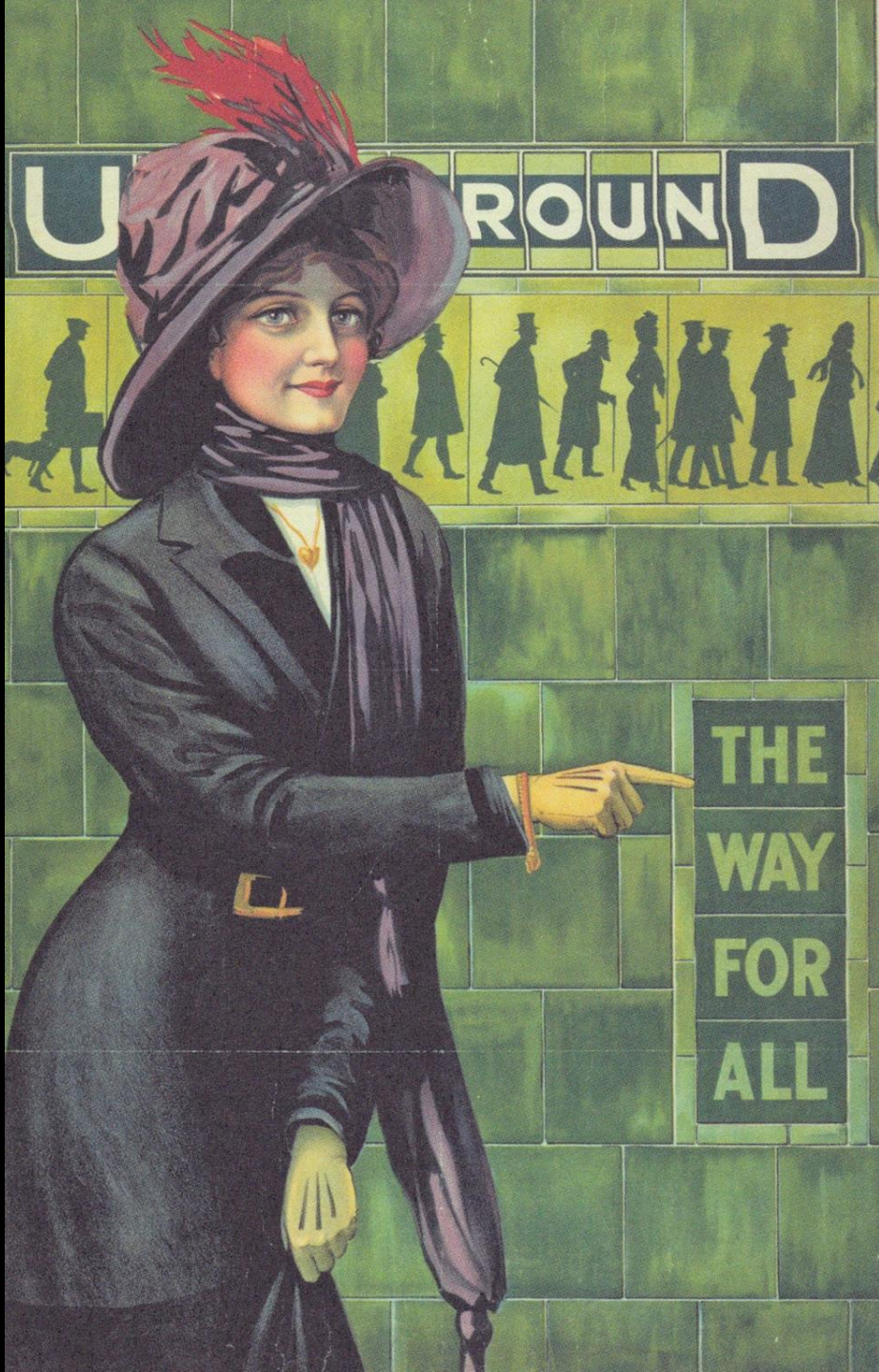
Jacob Epstein's
'Night'
on the
exterior
of the
London
Transport
head
office



Wallis, Gilbert
and Partners'
Stockwell bus garage
with its reinforced-
concrete shell-beam roof
covering 8000 m²







UNDERGROUND



THE
WAY
FOR
ALL

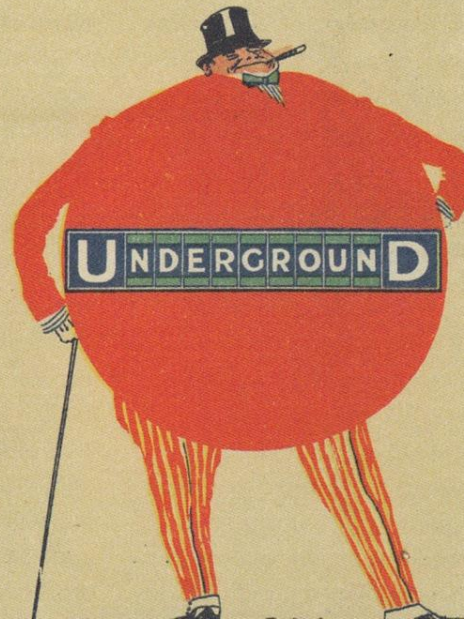
A

A's for Advertisement, also for Art,
And the Aim of this Alphabet right from the start.



U

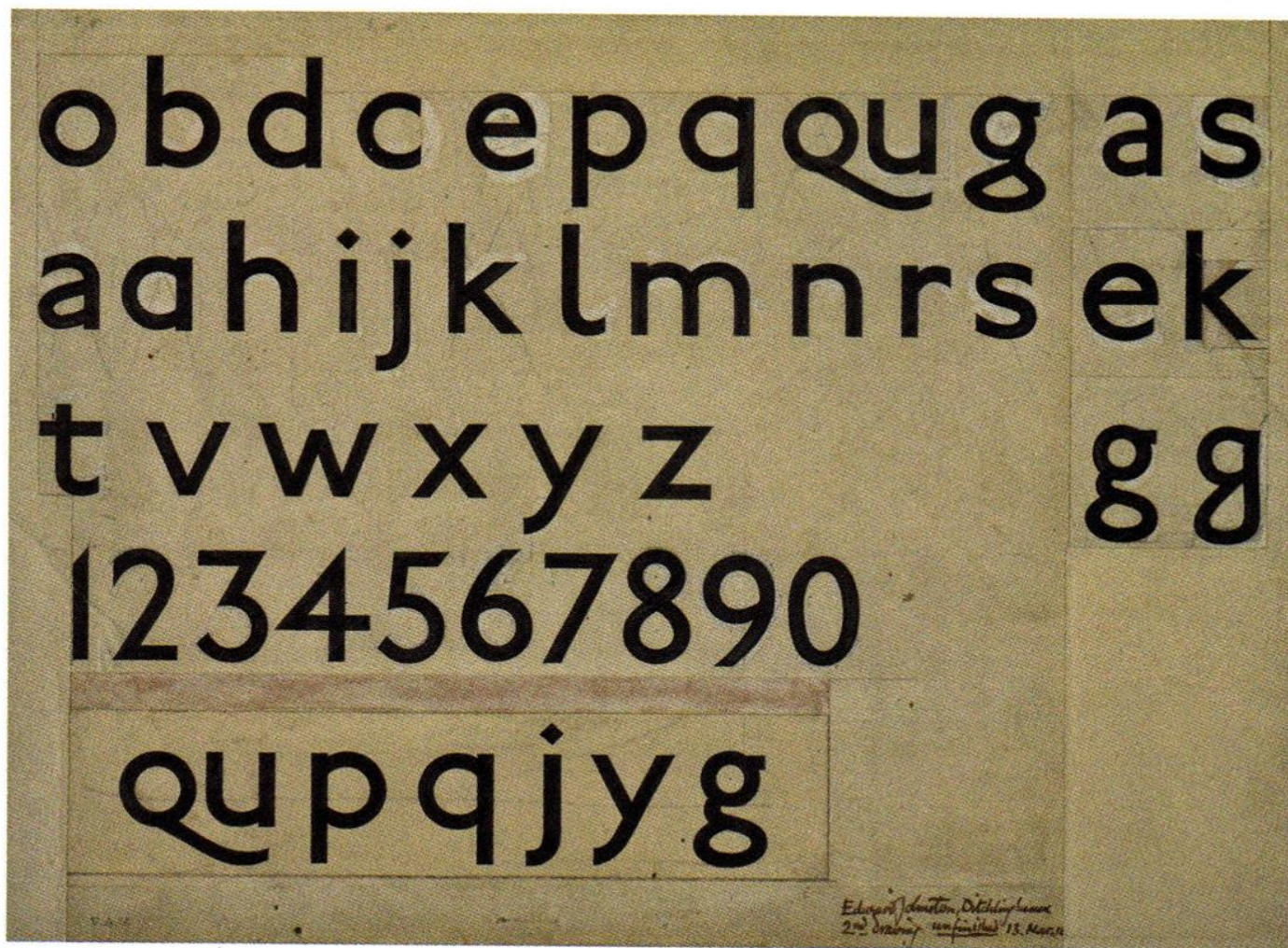
U is the Underground,
pride of the nation,
The triumph of science
and civilisation.



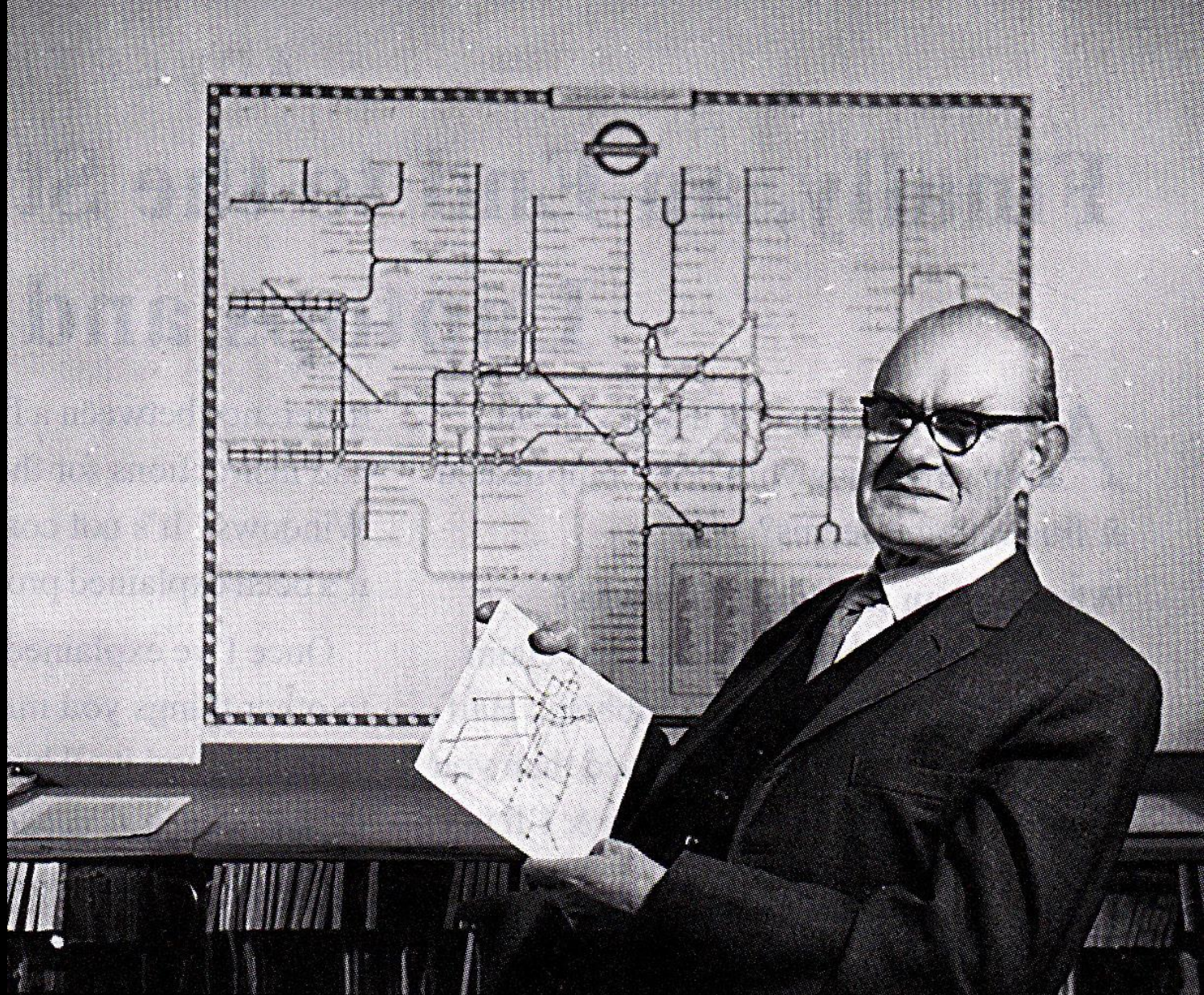
O

M

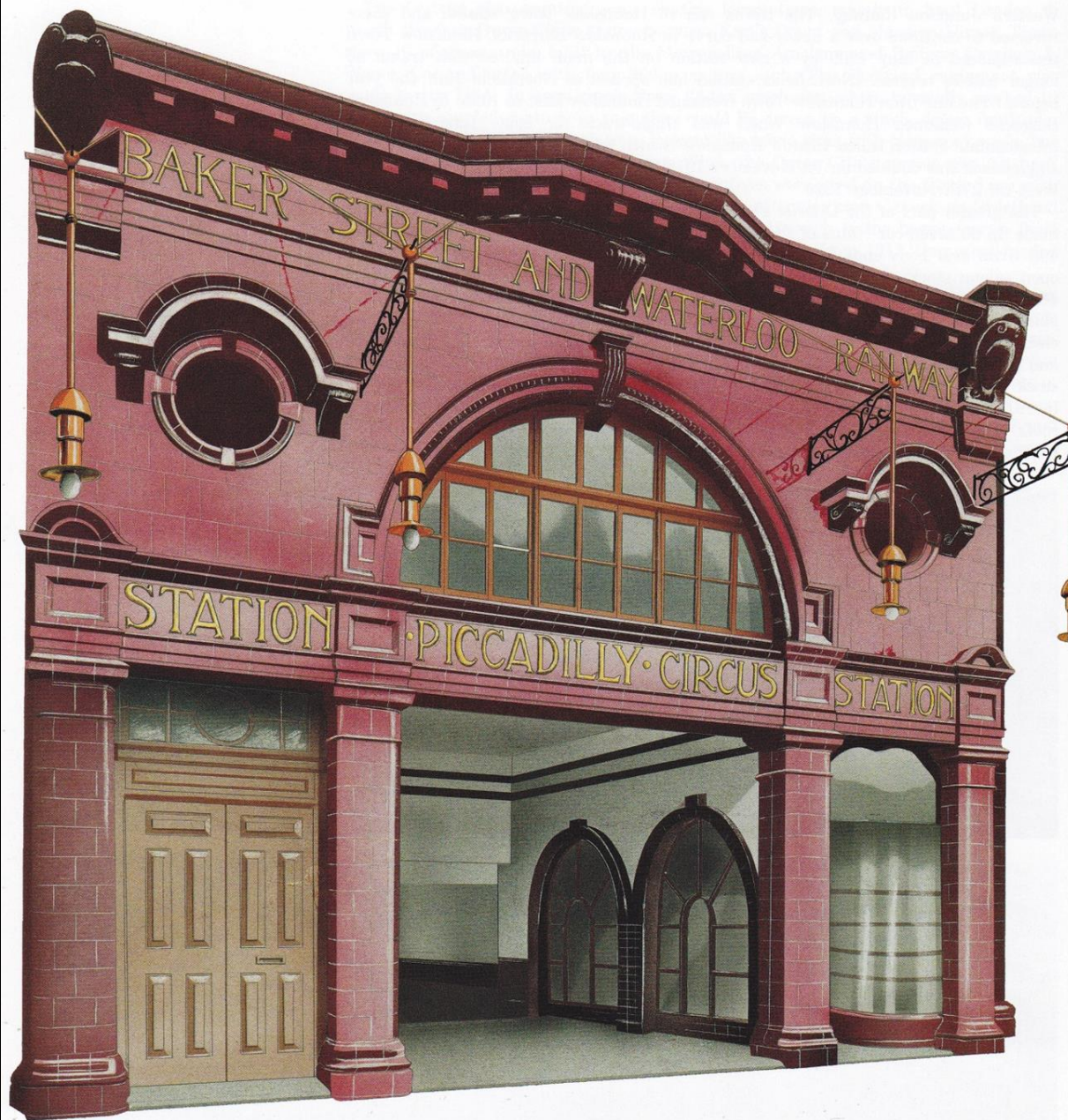
Details and a sample sheet
of Edward Johnston's
Underground typeface, first
presented to Pick in 1916.





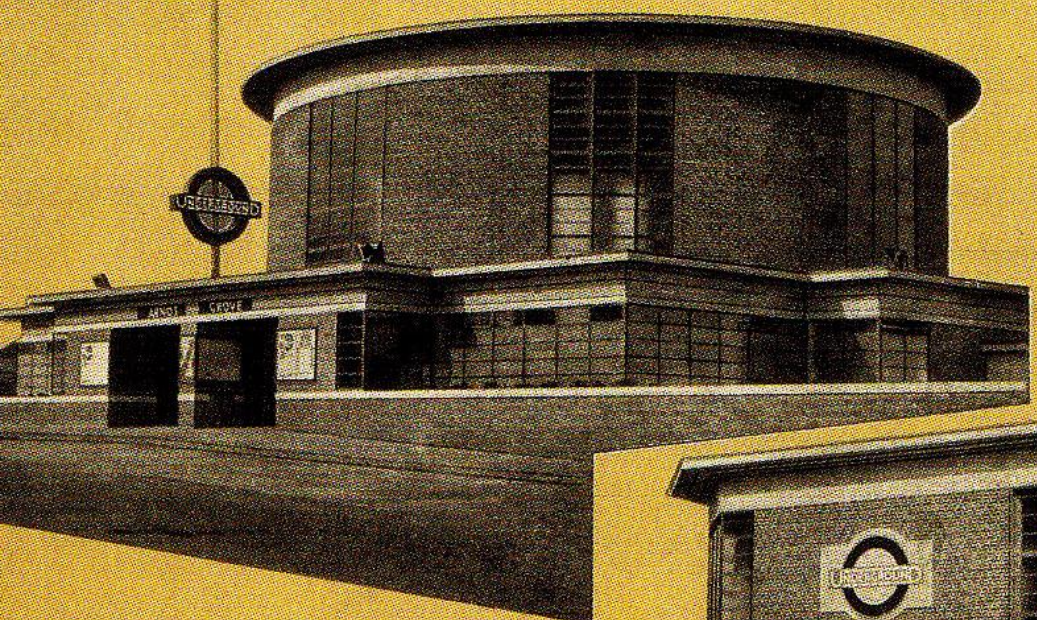


Portrait of Harry Beck with his map by Ken Garland, whose book, Mr Beck's Underground Map, is the definitive work on the history and design of the map

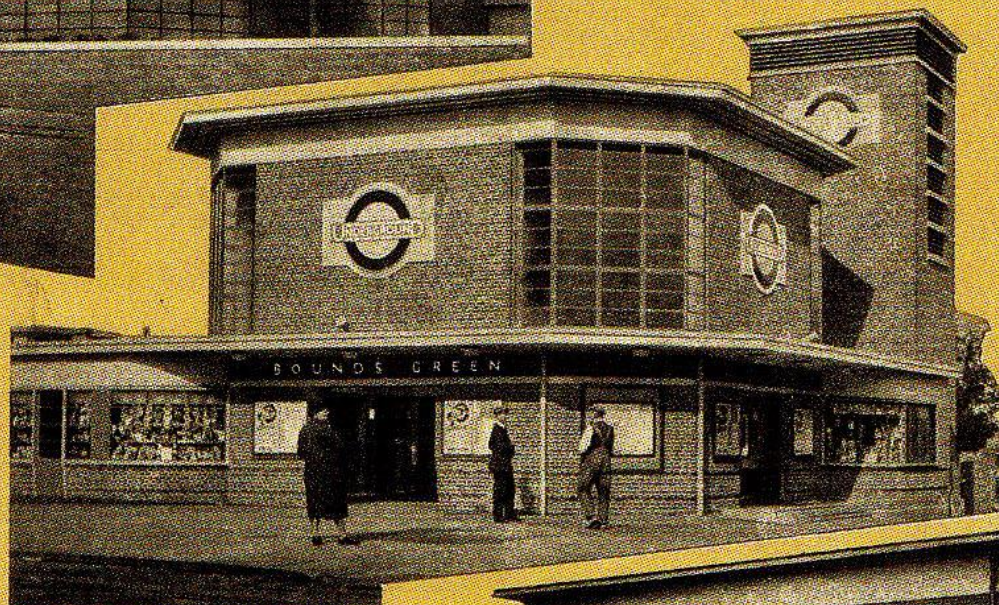


The Yerkes Tubes

THE LATEST IN
RAILWAY STATION
ARCHITECTURE
Come and see it

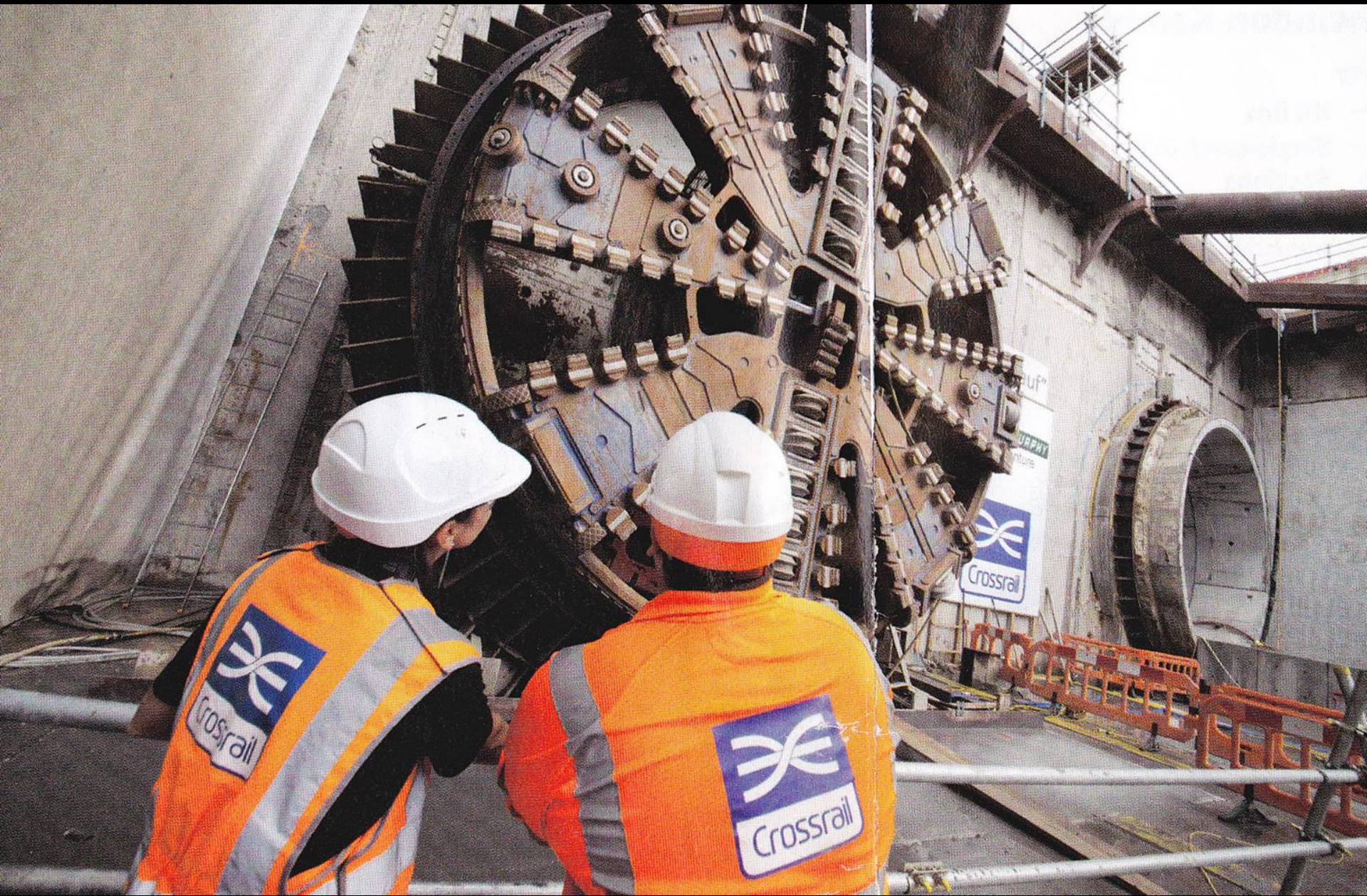


DIRECT
FROM
PICCADILLY



Manor House	16 mins.
Turnpike Lane	19 "
Wood Green	21 "
Bounds Green	23 "
Arnos Grove	25 "









"THE TIMES" - FRIDAY MAY 23RD 2014.

#

43

News

TIM ANDERSON



What the Dickens? A group of five Miss Havishams took to the London underground yesterday to promote a screening of *Great Expectations* on the TV channel Drama this weekend. Each model spent more than three hours being transformed

LONDON UNDERGROUND



LONDON
UNDERGROUND

THE ART OF THE POSTER



LONDON UNDERGROUND
THE ART OF THE POSTER