

# Model Railway based on Gargrave

David Mitchell

# Gargrave

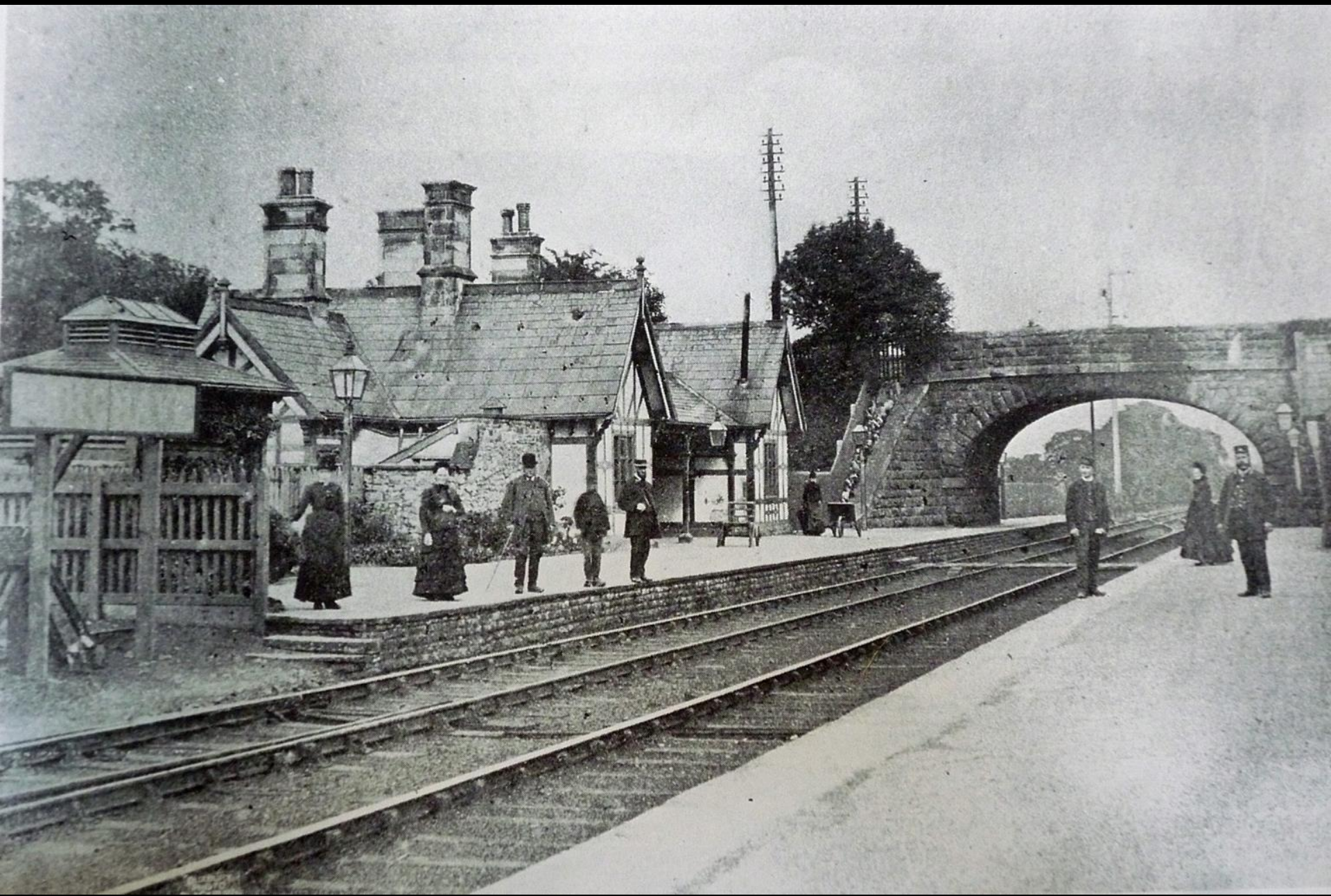






Gargrave

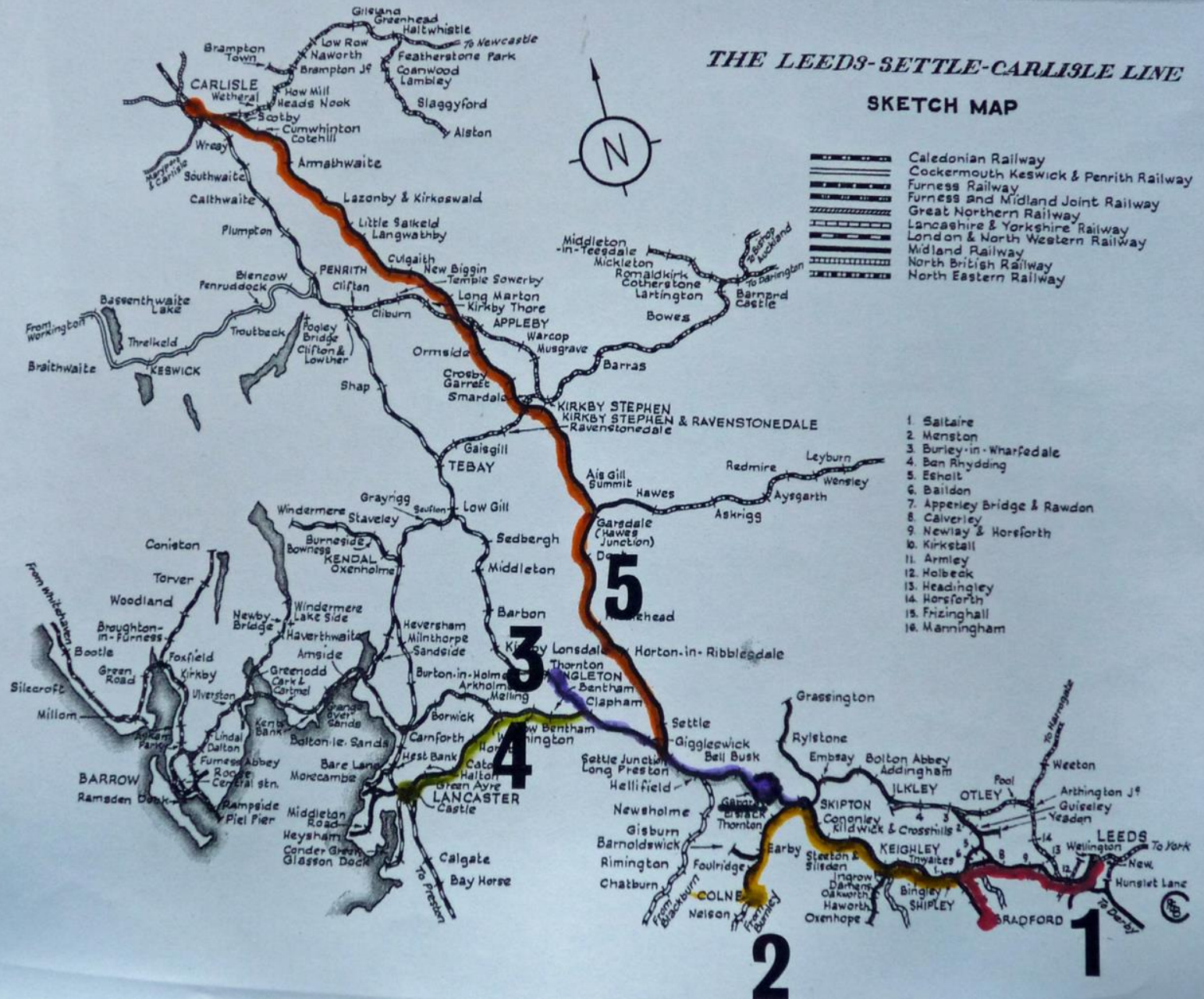
LOCAL SALES





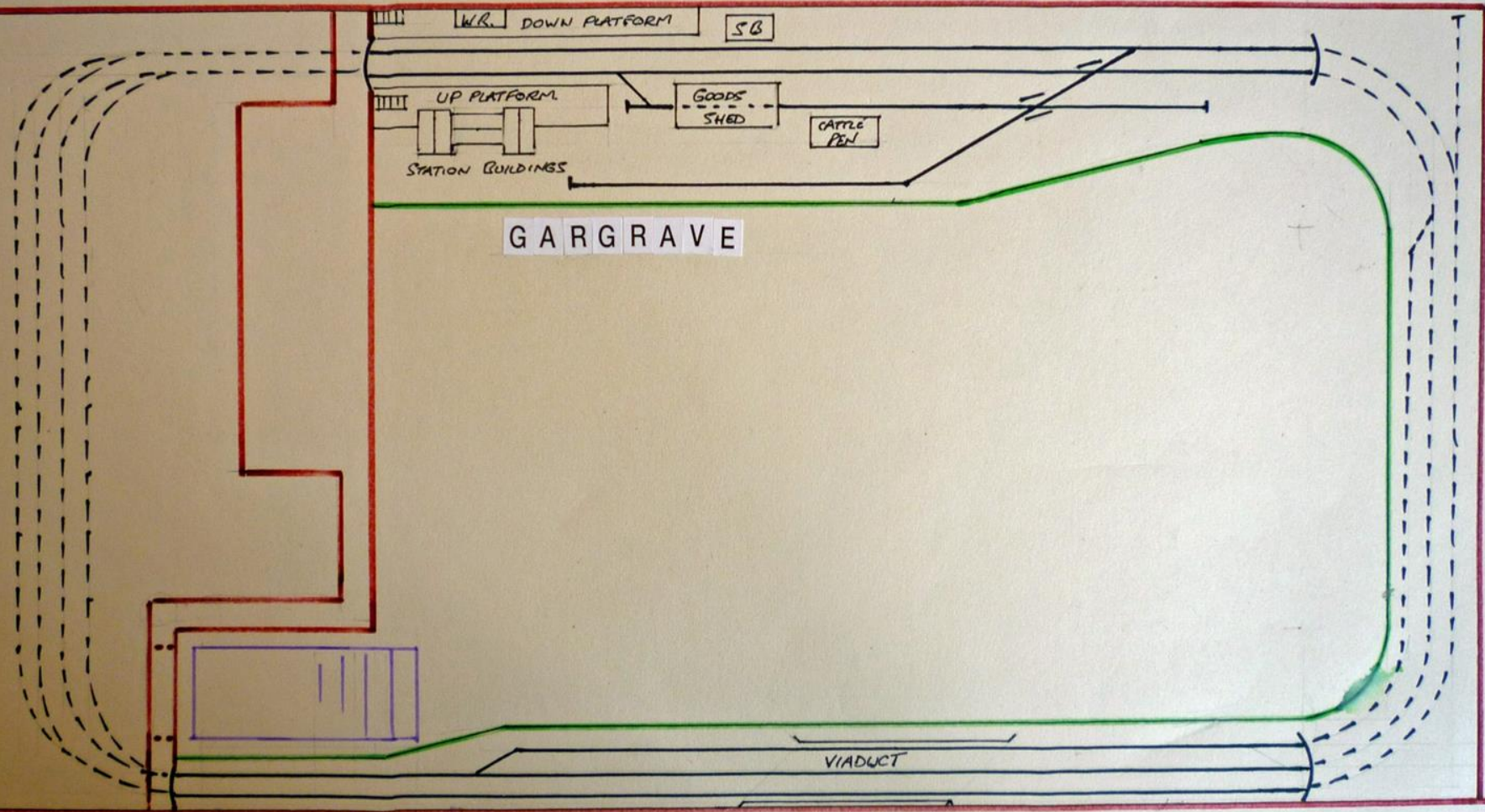
# THE LEEDS-SETTLE-CARLISLE LINE

## SKETCH MAP

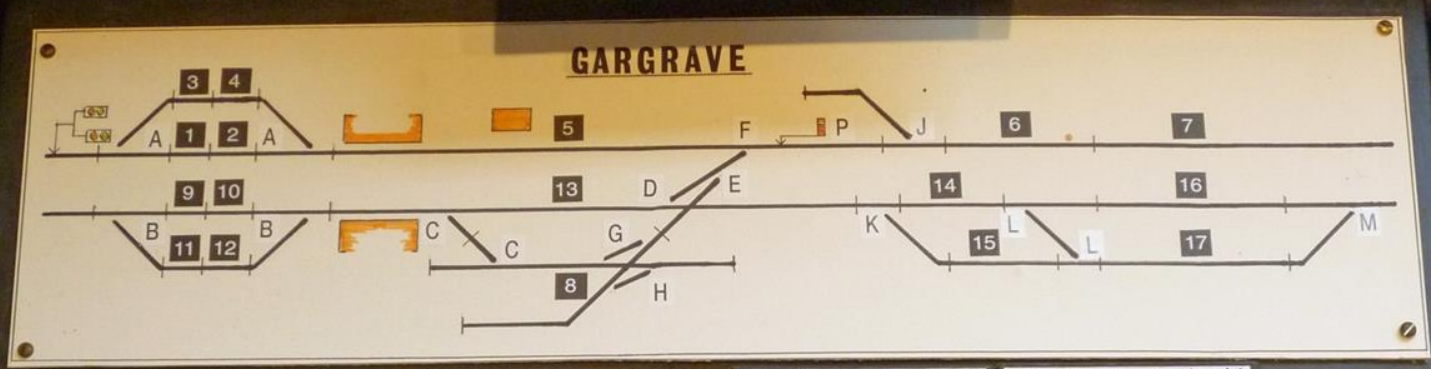
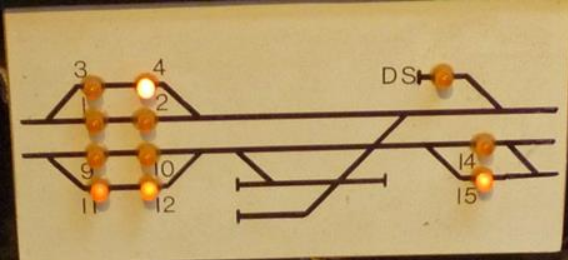


- ..... Caledonian Railway
- ==== Cockermouth Keswick & Penrith Railway
- ==== Furness Railway
- ==== Furness and Midland Joint Railway
- ==== Great Northern Railway
- ==== Lancashire & Yorkshire Railway
- ==== London & North Western Railway
- ==== Midland Railway
- ==== North British Railway
- ==== North Eastern Railway

1. Saitaire
2. Menston
3. Burley-in-Wharfedale
4. Ban Rhydding
5. Esholt
6. Baildon
7. Apperley Bridge & Rawdon
8. Calverley
9. Newley & Horsforth
10. Kirkstall
11. Armley
12. Holbeck
13. Headingley
14. Horsforth
15. Frizinghall
16. Manningham







A row of 13 track relays labeled A through M, each with a vertical indicator light. To the right is a red push-button labeled P.

A control panel with 16 toggle switches arranged in two rows of eight. The top row is labeled 'OFF' and the bottom row 'ON'. Blue labels are attached to the switches: '1006', '1007', '1008', '1009', '1010', '1011', '1012', '1013'. A 'DS' indicator is visible at the top right.

**MODEL 100** Cougmaster  
TRACK  
Electronic lace controller  
A rotary knob with a scale from 0 to 100. Below it is a 'TRACK' switch and a 'BRITISH MADE' label.

UP

**MODEL 100** Cougmaster  
TRACK  
Electronic lace controller  
A rotary knob with a scale from 0 to 90. Below it is a 'TRACK' switch and a 'BRITISH MADE' label.

DOWN

Slack out  
power  
9, 10, 11



Russian Steam Locomotives





SKW 1  
8



4.5m  
= 1'































DWIGHT D. EISENHOWER

60008



