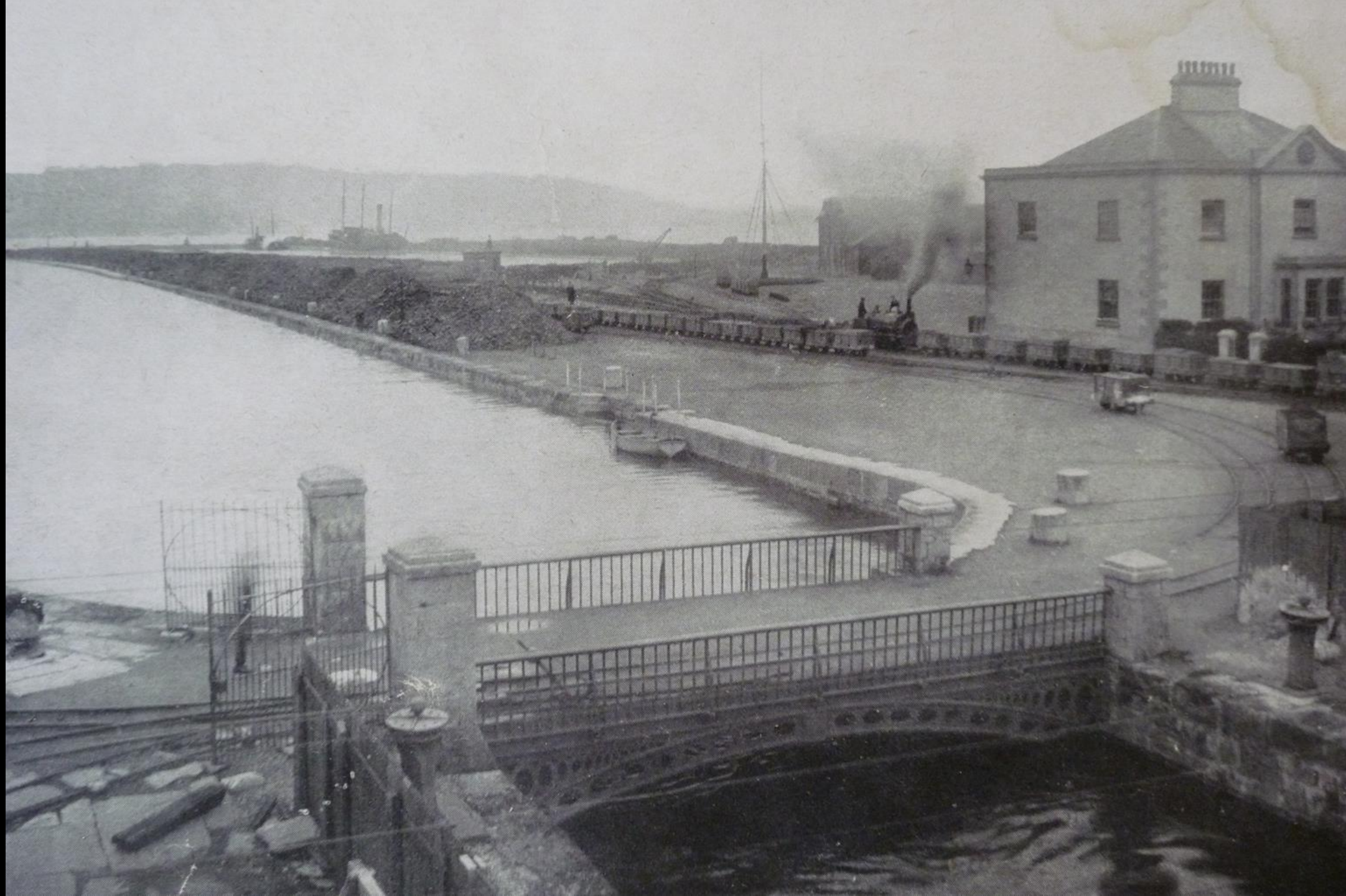


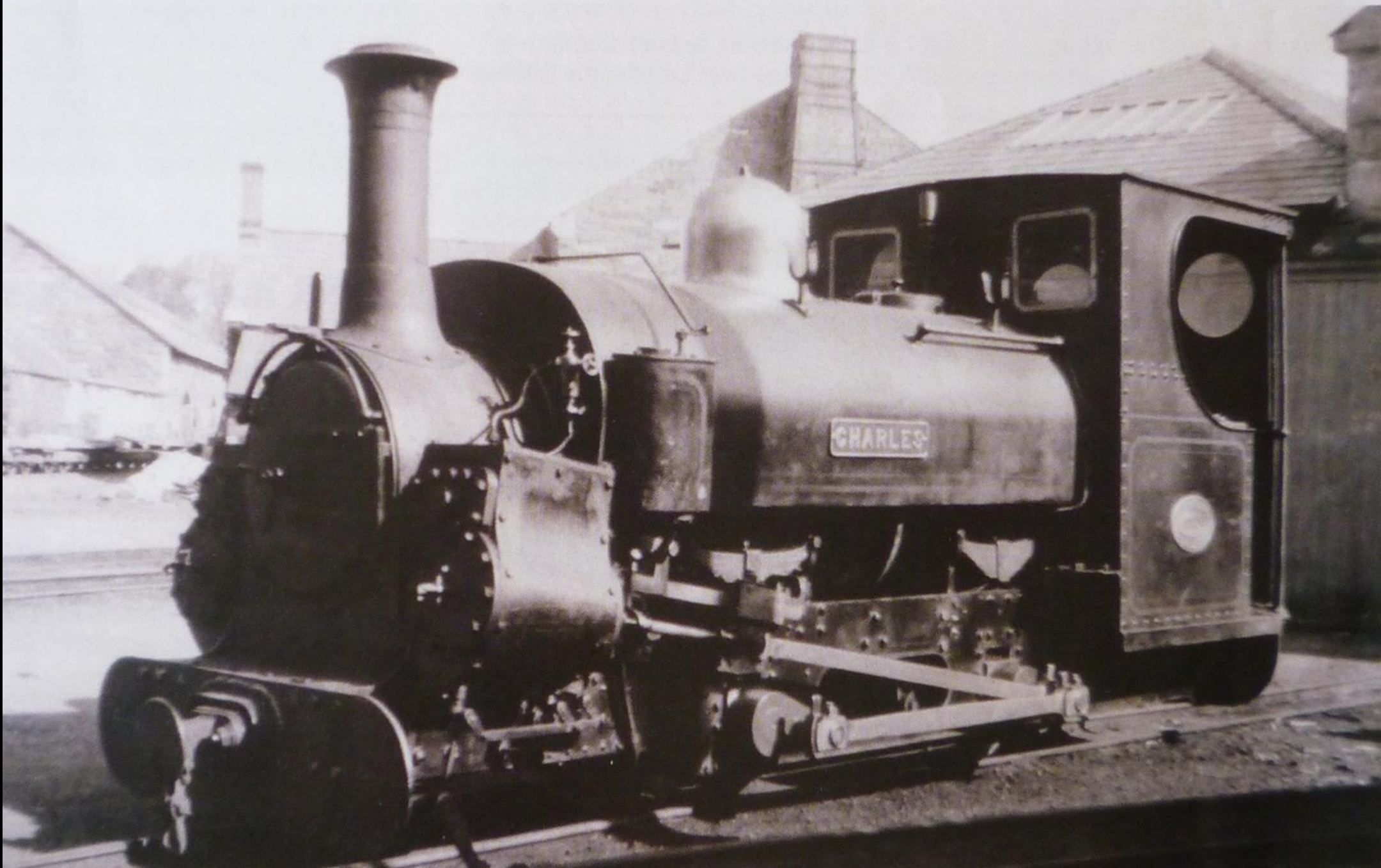
David Mitchell

**Memories of two lost narrow gauge railways
that lasted into the 1960's but were then scrapped**





904 *Hugh Napier*, and it is scheduled to steam next year. The trust is to invite it to run on its rebuilt railway. PR





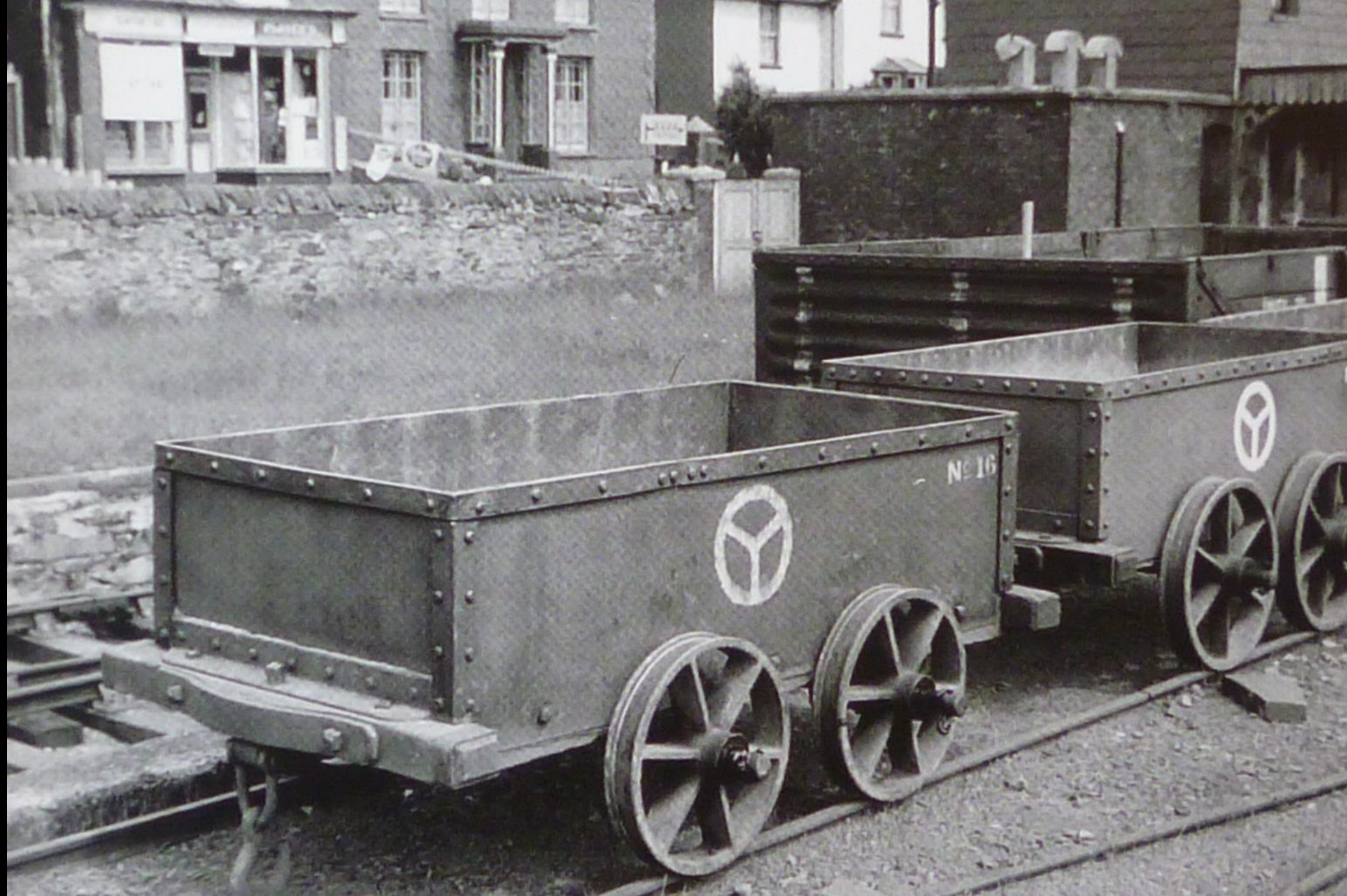














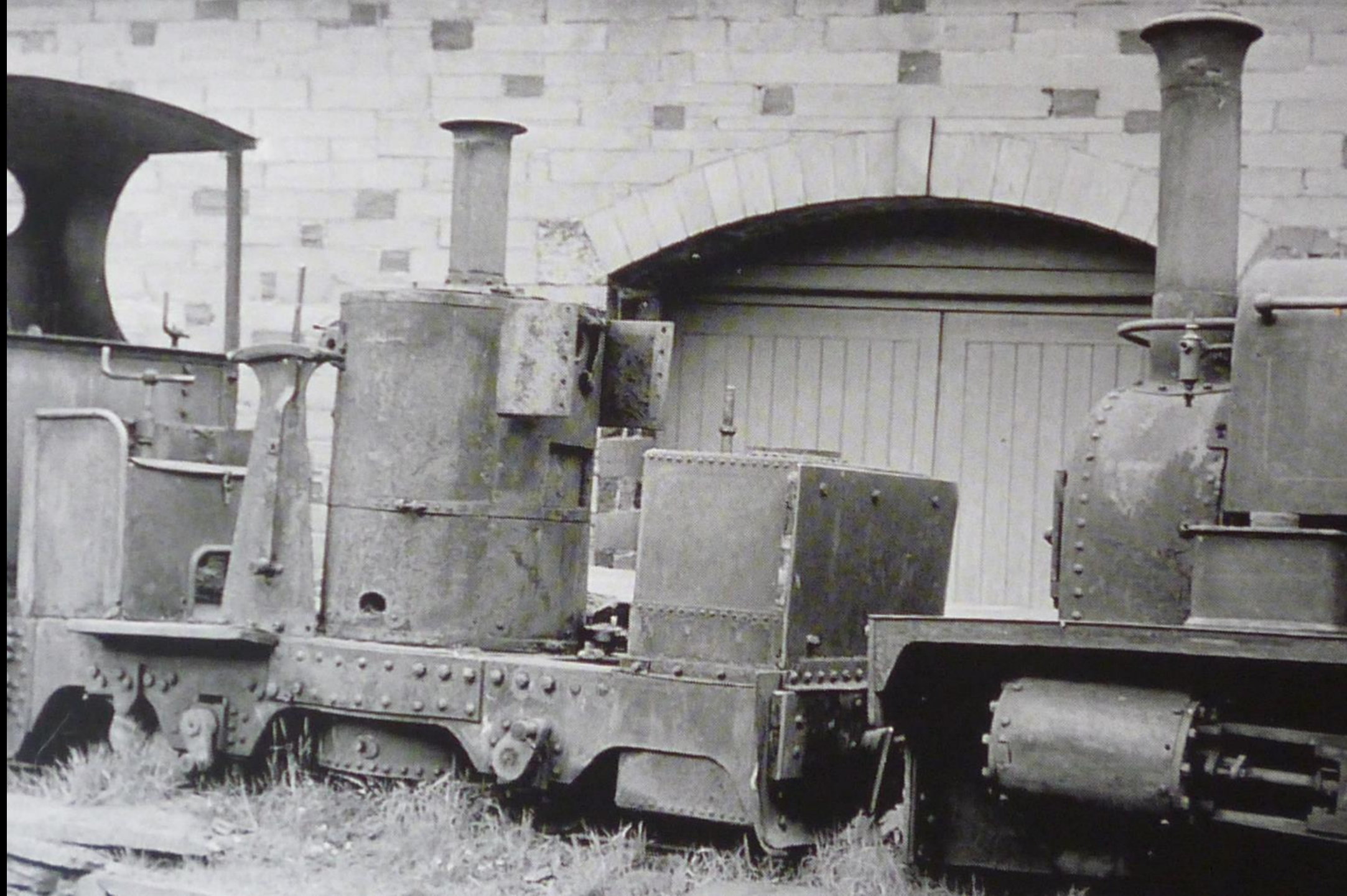


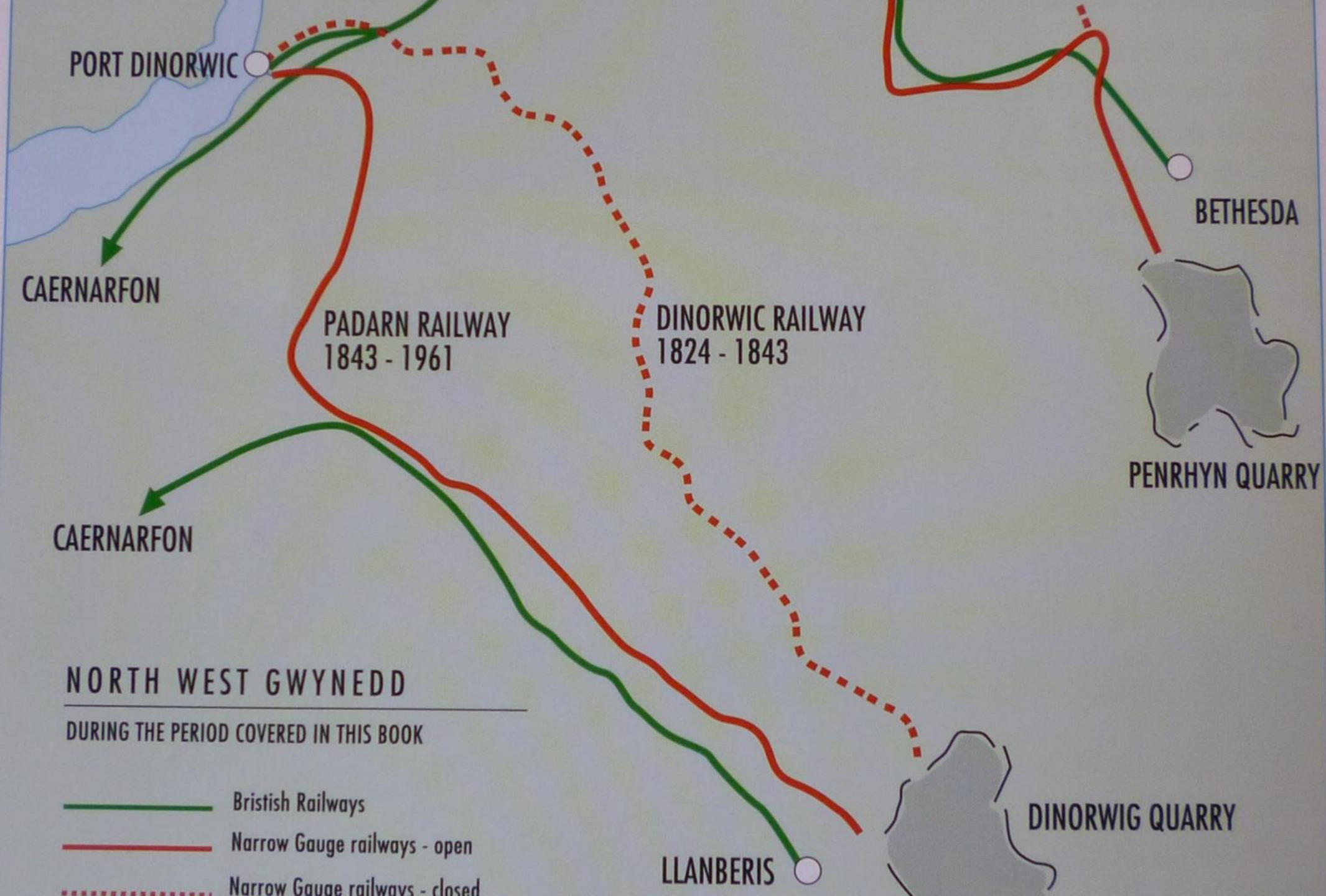
CEGIN











PORT DINORWIC

BETHESDA

CAERNARFON

PADARN RAILWAY
1843 - 1961

DINORWIC RAILWAY
1824 - 1843

PENRHYN QUARRY

CAERNARFON

NORTH WEST GWYNEDD

DURING THE PERIOD COVERED IN THIS BOOK

- British Railways
- Narrow Gauge railways - open
- ⋯ Narrow Gauge railways - closed

LLANBERIS

DINORWIG QUARRY













