

OLICANA MUSEUM & HISTORICAL SOCIETY

NEWSPAPER CUTTINGS OF LOCAL HISTORICAL  
INTEREST

VOL XII AUGUST 1979 - NOVEMBER 1979

G-13

# Ilkley Gazette

Incorporating "The Ilkley Free Press."

117-5,614

Sent by post for  
£9.62 per annum

FRIDAY, 24 AUGUST, 1979

Regd. at Post  
Office as Newspaper 72p

24 AUG 79

## REPLACEMENT OF ALL SAINTS SCHOOL GIVEN TOP PRIORITY IN COUNCIL'S PARISH PLAN

The replacement of All Saints First School, Ilkley, and the prevention of further erosion of Ilkley Moor have been placed at the top of the revised list for Ilkley's Parish Plan.

The Parish Council is asking Bradford Metropolitan Council to give these items top priority on a list which seeks improvements to waste land and a start to phase two of the development of the swimming pool off Denton Road.

Plans for the building of a single storey school and a caretaker's lodge on a site already purchased in Westville Road were approved nearly five years ago.

Since that time Bradford Metropolitan Council had given an assurance that the site would be retained for the school. Under the zoning scheme children eligible to attend the new school would be those living on the west side of Brook Street and Middleton.

The present school building in Leeds Road, which has been described as a disgrace, is one of seventy schools built before 1900 and requiring replacement in the Bradford Metropolitan District. Earlier this year it was estimated that it would cost over £300,000 for a replacement school at Ilkley and this has not yet been included in any programme over the next three years.

The Diocesan Board for Education has placed Ilkley All Saints First School and Bowling St. Stephen, Bradford, at the top of its priority list and has asked for both schools to be included in a Replacement Building Programme as soon as possible.

### Moorland Erosion

Some concern has been expressed about the erosion of moorland around the Cow and Calf Rocks and White Wells and the Council, listing this as second priority, is asking for a scheme of arresting the erosion by natural methods.

Other items listed in order of priority are:

Resurfacing of the car park on land formerly used as railway sidings opposite Ilkley Town Hall.

Improvement to Castle Hill and the Manor House Court yard.

Improvements to waste land and derelict areas off New Brook Street, particularly near the west side of Castle Road.

Provision of learner pool and diving pool as Phase Two of the development of the swimming pool off Denton Road.

Changing facilities for football teams, etc, at Greenholme Playing Fields, Burley.

Provision of play equipment for Derry Lane play area, Menston; riverside gardens, Ilkley, and Grange Park, Burley.

Improvements to station area — coal drops in Railway Road. Piping at Rushy Beck, Burley.

Ilkley Parish Council has also listed the following items for which no priority has been indicated:

Indoor Sports Centre (Phase Two) development of swimming sports centre off Denton Road, or alternative provision.

Further development of play areas.

Proposed expansion of Ilkley market.

As a minor item entailing small expenditure, the Parish Council is asking for the provision of adequate, sensible refuse containers in the Ilkley Parish generally, perhaps of a type used in National Parks.

### Tennis and Football

Menston Community Council has been asked to consider the possibility of the formation of a tennis club to which the tennis courts at Menston could be leased.

The netting around the courts had been removed because it was in a dangerous condition. The posts had been left in readiness for the replacement of the netting but these had since been damaged by vandals. A problem facing the Council was that no income was derived from the courts to offset maintenance costs. The Parish Council believed it would be unadvisable for the netting to be replaced until the courts were administered by a club.

Though improvements to the drainage of Menston football pitch had been carried out over the last few years and reseeding had recently been carried out, the Parish Council felt more radical measures were necessary and it has been agreed that improvements to the pitch should be added to the Parish Plan Schedule.

### Tree Identified

Sir, The tree at Emsay which recently attracted the interest of members of the Olicana Society would appear to be ACER PSEUDO-PLATANUS CORSTORPHINENSE, commonly known as the "Corstorphine Plane" or "Golden Sycamore". As Mr. Read pointed out, the leaves when young are pale yellow, golden in summer and finally green.

It was introduced to this country in the year 1600 at Corstorphine, Edinburgh, hence the name, and is infrequent in parks and gardens.

W. Whitehead  
Springfield Mount,  
Addingham. 24.8.79

### MAIN STREET, HAWKSWORTH



An authentic 17th Century Dales Style country cottage of immense charm and appeal beautifully set within 1/2 acre of secluded and natural gardens adjoining green belt at rear, facing south with distant views and within easy commuting distance of Leeds and Bradford. The accommodation which has the benefit of central heating throughout and many interesting old world features comprises—Entrance vestibule, sitting room, dining room, morning room (or Bedroom 3), kitchen, 2 further bedrooms, bathroom, double garage. R.V. £177. Offers in excess of £43,000. 24 AUG 79

ON VIEW THIS SATURDAY 10.30 a.m. to 12 noon.

### SOUTH VIEW FARM, DRAUGHTON NEAR SKIPTON

Facing due South in this charming small village between Skipton and Ilkley.



### AUTHENTIC DALES FARMHOUSE WITH ADJOINING BARN

Offering great scope for imaginative conversion. The property comprises two interconnecting cottages with Yorkshire slate roofs and a large adjoining barn and mistals. Small walled gardens.

To be offered for Sale by Auction at  
THE BLACK HORSE HOTEL, SKIPTON  
on FRIDAY, 7th SEPTEMBER, 1979 at 7.30 p.m.  
(unless sold previously by Private Treaty)

For full Details Apply Ilkley  
Solicitors Messrs. Walker, Charlesworth and Foster,  
Skipton. 24 AUG 79

# CENTENARY OF THE DEDICATION OF S. MARGARET'S CHURCH WILL BE MARKED BY WEEK OF FESTIVITIES

The Parish Church of Saint Margaret of Antioch in Queens Road, Ilkley, will be celebrating the centenary of its dedication on Monday, 10 September.

The Vicar, Canon Tom H. Levesley and the congregation have planned a suitable week of festivities and hope the people of Ilkley will join them in their celebrations.

Quite apart from the contribution the worship and witness of St. Margaret's makes to the local community, the building itself is one which Ilkley people should be proud to have. This remarkable edifice almost on the slopes of Ilkley Moor itself, is directly astride at least two water courses both of which have increased in the volume of water passing under and through the foundations since the recent enlargements of Ilkley College higher up the hill.

## Eminent Architect

Norman Shaw, the eminent Victorian architect, whose local works include the extensions to Bradford City Hall and the Cookridge Hospital, and the builders did their job well for in spite of this watery site the building stands firm and four-square on its foundations.

If the view of the church coming up Queens Road is thought by some to be rather formidable and severe, the view of the West end from up Queen Road is one of charming dignity. Alas the original spire or central tower in Norman Shaw's concept had to be abandoned because of the weight it would have imposed on the foundations, but may be it was a good thing to do without a spire when one considers the fate of the other Norman Shaw church in the diocese of Bradford. Good architect as he was, Norman Shaw was not at his best in designing lofty spires.

The interior of S. Margaret's is dominated by the splendid reredos, a masterpiece of carving by an Englishman in English Oak. The scene is that of the Upper Room in Jerusalem on the eighth day after Easter in the evening. Surrounding

this central panel are a multitude of angels and small animals working their way in and out of carved foliage.

One of the features of the celebrations will be a conducted tour of the church by the Vicar on the Wednesday evening when those who have never examined the architectural gem on their doorstep may have an opportunity to see it at their leisure.

## Parish Eucharist

Among the festivities planned are a Procession and Parish Eucharist on Monday 10 September at 8 p.m. when the former Archdeacon of Bradford, now Bishop of Dunwich, will be the preacher. This will be followed by a buffet supper and dance at the Winter Gardens. The following Sunday, 16 September after a Parish Eucharist in the morning when the Bishop of Bradford will preside and preach there will be an outdoor procession of witness from All Saints' Church to S. Margaret's in which all the local churches will take part. The West Yorkshire Metropolitan Police Band will lead and there is an open invitation to all Christians to join in the parade.

At S. Margaret's there will be a triumphant burst of praise with all the local choirs singing Stanford's Te Deum.

Every night during this week there will be something going on, a Requiem for Benefactors and Past Worshipers one evening, an organ recital by the Organist and Choirmaster Peter Jamieson on the Friday evening.

On Saturday, 22 September Peter Jamieson will conduct a performance of Messiah with principles, full chorus, orchestra and organ, thus ending the first century on a note of praise and proclaiming the faith in which the people of S. Margaret's will move forward into the future.

## SPECIAL SERVICE TO MARK CENTENARY OF S. MARGARET'S CHURCH

The former Archdeacon of the Diocese, Bishop Johnston, now Bishop of Dunwich, Suffolk, will be making a welcome return to the Bradford Diocese when he will be the preacher at the Eucharist service at St. Margaret's Church on Monday evening to mark the church's centenary. The church was dedicated by the Lord Bishop of Ripon, Bishop Bickersteth on 10 September, 1879.

At the same service will be the first hearing of a new setting of the words "Ave Verum Corpus" by Dr. Francis Jackson, the organist and choirmaster of York Minster. This motet has been commissioned by the church choir to mark the centenary and it is their sincere hope that Dr. Jackson's motet will become as well known as the settings by Byrd, Mozart and Elgar.

The United Procession of Witness will take place on Sunday afternoon 16 September. The procession will leave All Saints' Church at 3 o'clock led by the band of the West Yorkshire Metropolitan Police. Invitations have been made to local churchfolk of every denomination to join in the procession, and the Bishop of Bradford will be leading the act of Witness. The procession will finish at St. Margaret's with a short service of praise, with the joint choirs of the area singing a solemn Te Deum. As an added incitement to attend, all children will receive a special 'Centenary' balloon.

A fortnight tomorrow (Saturday) evening the Festival Chorus and Orchestra will be conducted by the church organist, Mr. Peter Jamieson, in a performance of Handel's Messiah.

Since the arrangements have been made for this, interesting details of an earlier performance have come to light, making this 'Centenary' Messiah an even more appropriate work of celebration.

## History of Church

Until 1873 the only Anglican place of worship in Ilkley was All Saints' Church, but at that time it was not large enough to hold the congregation, this being the heyday of churchgoing, and services were held in the National Schools to deal with the overflow.

A 'tin church', as it was known, was erected in the Riddings in 1874 and served for worship until the present building was completed. The trustees engaged the eminent architect, R. Norman Shaw, A.R.A., to design a stone church to hold 600 people at an overall cost of £5,000, this to include walls and fencing and heating apparatus.

Norman Shaw is perhaps best known as the man who designed the New Scotland Yard building in Westminster and he was a notable domestic architect of his day (Cragside the imposing Shaw-designed house in the North-East of England has recently been opened to the public). He kept his interest in St. Margaret's

up to his death in 1912 and was himself responsible for the design of many of the church's fittings. It was the design of St. Margaret's that earned him full membership of the Royal Academy and the original plans of St. Margaret's are kept in Burlington House today.

## Foundation Stone

On the 1 May, 1878 the foundation stone was laid and work proceeded. The original plan for a spire was abandoned because of the weight it would have put on the hillside foundations and, for the same reasons, the whole building as it now stands was built in one operation and not in sections as had been intended. It appears that the final cost at the time of the dedication was £15,000, which suggests that building costs in those days were as inflation-affected as today.

On 10 September, 1879, the church was dedicated by the Lord Bishop of Ripon, Bishop Bickersteth, and a celebratory luncheon was held in the Ilkley College next door. The money for the building was raised by May 1886 and a long process of adding ornaments started.

From the start St. Margaret's has been what is commonly called 'High'. Indirectly it owes its foundation to the revival of worship which sprang from the Oxford Movement and it has always maintained a high standard of sacramental life. Indeed, the opening of the 'tin church' established the future tradition when the choir entered wearing 'surplices' until then, unheard of garments in Wharfedale. Further the opening service was a choral Holy Communion, the first ever in this part of the world.

31 AUG 79

7-9-79

# CENTENARY OF S. MARGARET'S PARISH CHURCH

100 YEARS OLD ON MONDAY,  
10th SEPTEMBER

WE INVITE THE CITIZENS OF ILKLEY TO JOIN US IN OUR  
CELEBRATIONS

- Monday 10th  
at 8.00 p.m. Parish Eucharist  
Preacher and Guest of Honour The Rt. Revd. The  
Bishop of Dunwich, one time Archdeacon of Bradford
- Tuesday 11th  
6.30 p.m. Evensong sung by the Treble Voices of the Choir
- Wednesday 12th  
6.30 p.m. Healing Service  
7.00 p.m. Holy Communion  
7.30 p.m. Coffee in the hall (no charge)  
8.00 p.m. Tour of the Church, archives, vestments and  
treasures on show
- Thursday 13th  
8.00 p.m. Sung Requiem for our benefactors and past  
worshippers
- Friday 14th  
7.30 p.m. Sung Evensong followed by Organ Recital by  
our Choirmaster Mr. Peter Jamieson
- Sunday 16th  
10.00 a.m. Procession and Parish Communion  
President and Preacher The Rt. Revd. The Lord Bishop  
of Bradford  
3.00 p.m. Procession of Witness from All Saints' Church  
led by the Metropolitan Police Band.  
The Bishop of Bradford, The Archdeacon of Bradford,  
Clergy and Choirs of local Churches and we hope all  
Christians.  
At S. Margaret's a joyful burst of praise including  
all choirs singing Stanford's Te Deum
- Saturday 22nd  
7.00 p.m. The Messiah. Orchestra, chorus, principles.  
Conducted by Mr. Peter Jamieson. Tickets 50p.
- Church open for viewing each day until 4 p.m. and around service times.  
Short guide books available.

7 SEP 79

## SPECIAL SERVICE MARKS CENTENARY OF ST. MARGARET'S CHURCH

The hundredth anniversary of the consecration  
of St. Margaret's Parish Church was celebrated with a  
procession and Parish Eucharist on Monday evening.  
Some 500 people attended.

In a church decorated with  
many striking flower arrange-  
ments and with the special  
set of Centenary banners on  
the pillars the service was  
conducted by the Vicar,  
Canon Tom H. Levesley R.D.  
assisted by the Revs. Geoffrey  
Buckley and Leslie Hayes,  
both of whom exercise a part  
time ministry on the staff of  
St. Margaret's. A fanfare of  
trumpets greeted the arrival  
at the South door, itself a  
triumphal archway of flowers,  
of the Rt. Rev. The Lord  
Bishop of Dunwich, who was  
the preacher and president of  
the Eucharist.

The choir, augmented by a  
choirboy now in York Minster  
choir, was under the leader-  
ship of Mr. Peter Jamieson,  
the organ being played by  
himself and organists of All  
Saints' and St. John's, Ilkley.

In his address the Bishop  
paid tribute to the ministry  
for the past fourteen years of  
the vicar and his wife, recal-  
ling that as Archdeacon of  
Tom Levesley on St.  
Matthew's Day 1956. This was  
his first visit back to his old  
Bradford Archdeaconry since  
he had become a Bishop. He  
asked the congregation to  
keep firmly to the faith of  
Christ, never to be afraid of  
change, for many changes  
would come in the next few  
years.

### SACRAMENTS

During the administration  
of Holy Communion the choir  
sang a selection of motets  
from the back of the church  
and after 400 had received the  
Sacrament the choir returned  
to their places singing the  
hymn 'Pray that Jerusalem  
may have Peace and Felicity'.  
Before the blessing, with full  
organ and trumpets all joined  
in the great affirmation of the  
Christian faith 'Lord  
enthroned in heavenly splen-  
dour'. The Bishop gave the  
final blessing and dismissal.

In the congregation were  
the clergy of local churches,  
vicars and curates of churches  
in the Bradford Diocese,  
members of local congrega-  
tions and parties from  
parishes in Bradford. The  
Rev. Berisford Skelton, one  
time choirboy and server at  
St. Margaret's and now  
assistant curate at St.  
Anthony's, Byker, was chap-  
lain to the Bishop.

Representing the Bradford  
Metropolitan Council were the  
Deputy Lord Mayor, Tom  
Brown, and Lady Mayoress  
and the Ilkley Parish Council  
Chairman, Mrs. M. Renton  
and Mr. Renton.

ACROSS THE YEARS

7 SEP 79

## Consecration Of St. Margaret's Parish Church

### 100 Years Ago

The consecration of St.  
Margaret's Parish Church  
took place on 10 September  
1879. Work on the church  
had continued since 1877,  
and the foundation stone  
had been laid on 1 May,  
1878. The organist was  
Philip Arnes from Durham  
Cathedral, and His Lord-  
ship the Right Reverend  
the Lord Bishop of the  
Diocese was met and wel-  
comed by all the local  
clergy.

Luncheon followed the  
ceremony in the large hall  
of Ilkley College at which  
300 people attended. The  
company included "most of  
the leading gentry" of the  
district. Mr. F. S. Powell,  
one of the patrons of the  
new church presided.

It was announced that  
during the week of Ilkley  
Feast a dancing marquee  
was to be erected near the  
skating rink in Cumliffe  
Road. The advertisement said  
that "A First Class Quad-  
rille Band would be in  
attendance". A season ticket  
for three nights was to  
cost 2/6.

### 75 Years Ago

A concert at St. Marg-  
aret's Hall brought to a  
close the season's engage-  
ments, with a benefit night  
for the bandsmen.

Ben Rydding residents  
complained of a lack of  
public seats in the district,  
and they said that Ben  
Rydding had been robbed  
of its fair share of seats  
to provide more for the  
outdoor band performances.

An old resident of Ilkley  
using the vernacular dialect  
asked at Leeds station for  
a ticket to "Eethla" (Ilkley)  
and the booking clerk gave  
her a ticket for Keighley.  
She used her ticket and  
handed it in and the Ben  
Rydding ticket collector told  
her she had been on the  
wrong train. She remarked  
"Well, I'm ser, I asked for  
a ticket to Eethla and not  
for Keethla anyways."

### 50 Years Ago

A cricket team selected  
from the Australian Rugby  
League touring team beat

Ilkley Cricket Club by nine  
wickets at a charity match  
in aid of Ilkley Coronation  
Hospital. D. Bland was the  
highest scorer for Ilkley  
with a score of 35, and  
the only Ilkley bowler to  
get an Australian team  
member out was G. Smailes.  
A glorious summer had  
been enjoyed in England in  
1929, and there was still a  
"splendid burst" of fine  
weather in the first two  
weeks of September.

Although three weeks had  
elapsed since the brutal  
murder of Miss. Mary Lea-  
royd, the mystery remained  
unsolved and the murderer  
was still at large. The  
police activity seemed to  
have relaxed as no new  
clues came to light. The  
crowds of morbid sightseers  
who had poured into Ilkley  
and up Sedbergh Park had  
died down following the  
erection of a fence and a  
notice board at the bottom  
of the road.

### 25 Years Ago

The Moors and Parks  
Committee of Ilkley Council  
recommended the Council  
not accept an objection  
from residents in the  
Bridge Lane area to the  
proposed site of a child-  
ren's playground in the War  
Memorial Riverside gardens.  
Mrs. F. S. Hampshire was  
certain that the residents  
fear of nuisance arising  
from use of the playground  
were unfounded, as the site  
was some distance from any  
dwelling house.

A strange light was seen  
in Ilkley flashing across the  
sky. This gave rise to  
much speculation about  
flying saucers, men from  
Mars, "or else it might  
have been them Russians".

Owners of shop property  
in Ilkley were warned that  
they were going to get a  
frightful shock when the  
new rates assessments were  
completed, with some going  
up as much as 200 per  
cent. The warning was  
given by Mr. Douglas Hart-  
ley to members of the  
Ilkley Rotary Club at their  
weekly luncheon at the Blue  
Bird Cafe.

### SUPPER AND DANCE

After the service in church  
a buffet supper and dance was  
held in the Winter Gardens  
at which a huge cake sur-  
mounted by an icing model  
of St. Margaret's was the  
centre piece of the decora-  
tions and was later enjoyed  
by the company. Members of  
the St. John's Ben Rydding  
Mothers' Union kindly did the  
chores so that the St.  
Margaret's folk could enjoy  
the party. Mrs. Christopher  
Greaves was the organiser of  
this enjoyable conclusion to a  
happy celebration.

On Sunday there will be the  
final event of the week of  
festivities when a procession  
will leave All Saints' Church  
at 3 p.m. to re-enact the  
events of a hundred years  
ago when All Saints' handed  
to St. Margaret's the responsi-  
bility of a ministry of sacra-  
ment and word. The West  
Yorkshire Metropolitan Police  
Band will provide the music  
and the Bishop of Bradford  
will lead the procession, which  
will be joined at stages by  
members of other churches in  
the town.

This is not the last event,  
for a week later on Saturday,  
at 7 p.m., Handel's Messiah  
will be sung in church under  
the baton of Peter Jamieson  
which should be a fitting con-  
clusion to an exciting time.

14 SEP 79



The procession leaves All Saints Parish Church, Ilkley, on Sunday on its way to St. Margaret's Church as the climax of a week of centenary celebrations at St. Margaret's.

## MASS PROCESSION WAS CLIMAX OF CHURCH'S CENTENARY CELEBRATIONS

On Saturday afternoon the children of the church were entertained to a barbecue on Ilkley Moor at the rear of Moorland House School, where Mr. Donald Penty and a band of helpers cooked soup and hot dogs. Games were played and a children's S. Margaret's birthday cake was speedily consumed.

Mr. Wilf. Thirby of Burley-in-Wharfedale then gave a display by his little dog "The Pride of Norwood", which delighted the children.

The high spot of the afternoon was that each boy and girl wrote a message on a label telling the finder about his or her sentiments about S. Margaret's. These were attached to balloons, and at a given signal all were released together and sailed away in a perfect blue sky south eastwards. The Vicar said on Sunday morning that they had gone off towards Russia.

On Sunday, after Parish Eucharist at which the Bishop of Bradford, the Rt. Rev. Ross Hook, was both preacher and president, the church was transformed to be ready for the climax of the week.

At 3 p.m., led by the Metropolitan Police Band of West Yorkshire, the Vicar of All Saints' Church, the Rev. Richard Cleland, with the Archdeacon of Bradford, The Venerable Frank Sargeant and his churchwardens and choir, together with members of the congregation, left All Saints' and marched up Brook Street.

Saturday and Sunday brought to a conclusion the week of celebrations of the Centenary of St. Margaret's Parish Church at Ilkley, with a mass procession from All Saints Church to St. Margaret's on Sunday being led by the West Yorkshire Metropolitan Police Band.

Awaiting them at the Monkey Rack were the Bishop of Bradford, the Vicar of S. Margaret's, Canon Tom H. Levesley, S. Margaret's Churchwardens Messrs. Donald Penty and Leonard Darley, the choir, servers, and a crowd of the congregation, with the Vicar and people of S. John's, Ben Rhydding.

When the All Saints' contingent arrived the Vicar addressed the Bishop, reminding him that one hundred years ago the people of the old Parish Church had handed to S. Margaret's the responsibility of preaching the Word and ministering the Sacraments. He then handed to Canon Levesley a Chalice and Bible as a token reminder of that historic event. The band led the singing of the hymn 'Jesus shall reign where'er the sun'.

The procession then marched up Wells Road, where the Free Church clergy and people waited to greet them. The Rev. John Dale on their behalf extended greetings. Also present with him were the Revs. Joe Bolton, Alec Cook, Peter Barker and choirs and congregations from the United Reformed Church, the Baptists, Ilkley and Ben Rhydding Methodists. The hymn 'We have a Gospel to proclaim' was

sung before the now very long procession of at least 500 adults and children with banners and balloons moved off up Wells Road.

Immediately behind the band was the Crucifer from S. Margaret's, carrying a large Christus Rex, the Thurifer and Acolytes, and the Vicar leading the Bishop in Cope and Mitre.

Arriving at the church the procession entered, the Bishop and Archdeacon taking their places in the Sanctuary, the clergy in the choir, and the combined choirs of the Ilkley churches, numbering 94 voices under the direction of the S. Margaret's choirmaster Mr. Peter Jamieson, sang a solemn Te Deum to the setting of Stanford in B flat. Trumpeters from Woodhouse Grove School and the organ played by the choirmaster of All Saints', Mr. Nigel Duce, accompanied the singing. During the singing of the Te Deum the oldest symbol of worship used by man and used regularly at S. Margaret's was experienced as the incense smoke ascended along with the praise of the hymn of ancient origin.

Finally, after the Coronation setting of the Old Hundredth, the Bishop challenged the congregation to 'Go in peace and serve the Lord'.



The Vicar of All Saints Parish Church, the Rev. Richard Cleland (left) is met by the Vicar of St. Margaret's, Canon Tom Levesley, and the Bishop of Bradford, the Rt. Rev. Ross Hook, as the procession from All Saints reaches the bottom of Wells Promenade.

# COUNCIL FAVOURS ALTERNATIVE ROUTE FOR BRIDLE WAY ACROSS TOP OF ILKLEY MOOR

An alternative route to that proposed by Bradford Metropolitan Council for a bridle way across Ilkley Moor has been suggested by the Council for the Preservation of Rural England and supported by Ilkley Parish Council.

This would take riders across the top of the moor instead of along the lower reaches — a route which has been much criticised by walkers and preservation societies since it was first proposed by Bradford Metropolitan Council last December.

In putting forward an alternative route the Yorkshire Lower Dales Branch of the CPRE says there appeared to be considerable local objection to the route, put forward by Bradford Metropolitan Council, which passed close to the town through part of the moor where riders were most likely to interfere with the enjoyment of others.

"Many who use this part are elderly persons who can not walk very far, many are children and there are visitors and picnickers who like to sit about and play. Inevitably riders are an intrusion and in wet weather they churn up the tracks," says the CPRE.

## Route recommended

It appeared at a recent public meeting that the object of the route put forward was to provide a through track from Burley-in-Wharfedale to Aaddingham says the CPRE.

"If there is a need for this—which we doubt—we suggest that a route be planned starting at the Cow and Calf Hotel, crossing the moor on one of the existing old roads or tracks to the upper part of Backstone Beck where there is a crossing, then to Cronshaw Thorn and passing to the south of the Ilkley Craggs plantation above Willy Hall Spout to Spicy Gill where the Keighley Road crosses that stream. After that the existing proposed route can be used. The exact line of the route would have to be fixed after considering existing footpaths and archaeological features," recommended the CPRE.

"If necessary there could be an extension at the Ben Rhydding end by adding the part of the existing proposed route which runs between the Cow and Calf Hotel and the end of Maxwell Road to the point where that road joins Hangingstone Road. This would give riders two points at which they could start their ride on the moor.

"It seems clear to us that the real need is not for a through route at all but for some track or tracks where riders both from Ben Rhydding and from Ilkley can go without being a nuisance to others. This can be provided to the west of the Keighley Road as on the route already put forward at the public meeting and to the east of Backstone Beck on the lines we have suggested," said the CPRE.

In a letter to the Parish Council, Mrs. K. Edwards, of Ilkley Civic Society, said the route proposed by Bradford Metropolitan Council traversed the most popular area of the moor used mostly by families out for a stroll, a picnic and with their children who could play safely. Mrs. Edwards asked for a bridle

way east of Backstone Way and to the west of the Keighley Road and if necessary a connecting route higher up.

"It seems a pity to spoil a valuable amenity like this particular part of the moor and one so appreciated by families with young children, especially so in this 'Year of the Child'," says Mrs. Edwards.

## "Move acceptable"

Chairman of Ilkley Parish Council, Cr. Mrs. M. Renton at Monday's meeting of the Council said she had walked the route now suggested by the CPRE and believed this would be more acceptable to the majority of people who represented Ilkley residents at the public meeting. Cr. Mrs. Renton could see no reason why the route now suggested should not be acceptable to the Riding Association with the exception of young or inexperienced riders who should not be alone anyway. "I would like to see this Council make a recommendation tonight on this subject which has been on our minds and on the agenda of the Council for the most part of this year," said Cr. Mrs. Renton.

During the past ten days she had received three complaints about horses around the tarn and on the path by Backstone Beck.

Supporting the alternative route forwarded by the CPRE, Cr. W. Forrest said the new route would take riders away from pedestrians. "I can't see riders having any objections to this route which across the top of the moor will be nice and dry."

Cr. F. G. Lambert could not support the route put forward by Bradford Metropolitan Council for it was in an area where children played and where people took walks. "It is wrong to put horses in an area where people are walking," he said.

Cr. C. D. Poole pointed out that riders had as much right as walkers on the moor and if the bridle way proved unsuitable he did not think riders would persevere with it.

After the Council, of which only half the members were present at the meeting, had agreed to recommend to Bradford Metropolitan Council the approval of the route put forward by the CPRE, Cr. Mrs. Renton commented "I am delighted that at long last we have reached a recommendation and hope that Bradford Council will take a sensible view of it. 7 SEP 79

## Mrs. Hardy was Yeadon's poetic record keeper

A well-known Yeadon resident, Mrs. Mary Hardy, who has died at the age of 93 had an unusual gift. She kept records of her home town and of her family entirely in verse form.

Mrs. Hardy was born in Alma Street Feb. 1, 1883, as Mary Elizabeth Penny, attended South View School until she started work in 1897 at Low Mills Rawdon as a "nipper". From there she worked at the "Old Dog" mill, Greengates, ve's mill and Wm. Murgatroyd's woollen mill, where her husband, Harry, also worked for 35 years before retirement.

Mrs. Hardy met her husband at Rawdon Feast, and they were married at St. John's Church Jan. 5, 1907. They lived for nearly 50 years in Football, Yeadon, and celebrated their silver and golden weddings, the latter on the stage of the Town Hall after the final performance of the annual pantomime when Mr. Joseph Hiley former MP for the Pudsey Division, presented their anniversary present.

Mrs. Hardy celebrated her 80th birthday by writing a six-verse poem, and her records were kept up to date until she entered Middleton Hospital where she died.

Her only daughter, Minnie, married Mr. Lewis Kershaw of Bradford and they had one son, Peter, and two grand-children Simon and Ruth. Her daughter predeceased her by eight years.

Mrs. Hardy's remarkable verse-record is now a treasured possession of her son-in-law, and remains as a perpetual reminder of "grand Yeadon lass" 7 SEP 79

## WHEN WAR BROKE OUT

News of the declaration of the war between Great Britain and Germany on 3 September, 1939, was received with a "quiet soberness" in Wharfedale.

Forty years ago this week local residents were taking the initial steps of adapting themselves to conditions that were to last for several years.

The declaration of war was made on a Sunday morning when many people were at church. In some churches the news that the Prime Minister, Mr. Neville Chamberlain was to make that historic broadcast was given from the pulpit and in others the service was shortened so that worshippers could return to their homes to hear the broadcast.

At a quarter past eleven that day Mr. Chamberlain said "this morning, the British Ambassador in Berlin handed the German Government a final note stating that unless we heard from them by eleven o'clock that they were prepared at once to withdraw their troops from Poland, a state of war would exist between us."

"I have to tell you now that no such undertaking has been received, and that consequently this country is at war with Germany."

Everywhere in Wharfedale the news met a quiet and sober reception. Many who heard it knew well from experience what war meant; it was only just over twenty years since the end of the First World War.

The work of evacuation into Wharfedale on the Friday and Saturday and the "black-out" on the Saturday had prepared the minds of most people for Sunday's announcement, though even to the last there were those who held out hopes that some other solution other than war would be found. Evacuees from the Leeds district arrived at Ilkley and were received in the King's Hall and after being served with tea and a bun they were taken in small parties to all parts of the town to their new homes.

At Ilkley and Burley two first aid posts were established and considerable alterations were to be made to St. Margaret's Hall, Ilkley, and the Lecture Hall, Burley, to adapt them for dealing not only with ordinary casualties but

also for decontamination from gas.

The Council was preparing schemes for the adaptation of cellars in the centre of Ilkley as public air raid shelters and appealed to traders in Brook Street and on The Grove for this accommodation. The Surveyor's Department of Ilkley Council was responsible for rescuing people from damaged buildings and the repair of broken communications, including sewers and water supplies. "Spray Boards" covered with detector paint for determining if persistent gas had been sprayed from enemy aircraft were to be erected and fifteen Air Raid Precaution Posts were set up between Bramhope and Blubberhouses.

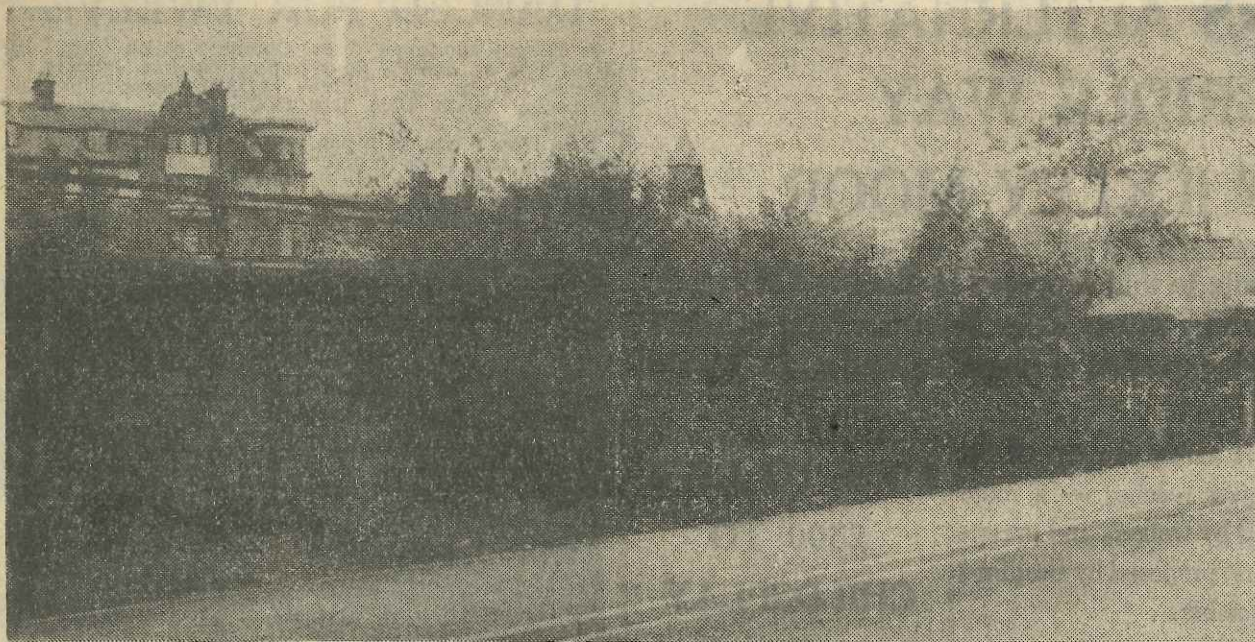
Everyone was being asked to carefully memorise the details of the air raid warning signals. A warning of an impending air raid would be given by a fluctuating or "warbling" signal possibly supplemented by sharp blasts on police whistles. The "raiders passed" would be a continuous signal at a steady pitch. If poison gas had been used, warning would be given by hand rattles. The ringing of handbells would announce that danger from gas was past.

A local sub-committee was set up under the West Riding War Agricultural Executive Committee and one of its first tasks was to remind local farmers to increase home production of essential foods—a task that was as vital to the nation as that which had to be carried out by the armed forces.

A Food Control Committee was being formed and proposals were being made for the use of the King's Hall as a communal feeding centre and of "One Oak" as a convalescent home. All dealers in coal and coke were being asked to apply to the Local Fuel Overseer for registration as coal distributors, and the Women's Voluntary Service Evacuation asked for gifts of clothing, shoes, knitting wool and materials.

During that first week Ilkley did much to prepare for a war which was to last for the next six years. Though there was to be no destruction locally from aerial attacks bombs did fall on Leeds and Bradford and the nearest to Ilkley came when a bomb was dropped on Bolton Abbey cricket field. 7 SEP 79

## Council Seeks Improvements To Ilkley Site



Ilkley Parish Council in its revised list of Ilkley's Parish Plan is asking Bradford Metropolitan Council for a scheme to improve the appearance of the coal drops, formerly used by the railway, in Railway Road, Ilkley. 7.9.79

## THREAT TO ILKLEY TOWN HALL 14 SEP 79 FOLLOWED BY PROPOSAL TO CLOSE SOCIAL SECURITY OFFICE

Soon after reports that the future use of Ilkley Town Hall as a district office by Bradford Metropolitan Council was under review the Department of Health and Social Security has announced that it is their intention to close the enquiry office in Riddings Road, Ilkley.

This worsening situation in the provision of public services in the Ilkley District since Local Government Reorganisation is under frequent discussion by Ilkley Parish Council which has prepared plans in an attempt to gain more authority.

Mr. A. Kempson, Manager of the Keighley office of the Department of Health and Social Security has told the Parish Council that at present the Ilkley office was open one day a week on Fridays and the number of callers had fallen to a level when it was not considered that continued opening was justified.

"A large proportion of the callers use the office simply to hand in medical certificates, forms or other documents which could, without difficulty, be posted to this office using in many instances the prepaid labels which have already been provided," stated Mr. Kempson.

"It is proposed therefore to close the Ilkley office after business on Friday, 16 November, 1979. I am sending copies of this letter to Dr. Keith Hampson MP and Bradford Metropolitan District Council," stated Mr. Kempson.

Chairman to the Council, Cr. Mrs. M. Renton said no doubt some hardship would be felt in the district and Cr. C. D. Poole thought the Council should ask the Department to quote figures. The people of Ilkley on average each paid in the region of £30 more in rates than those in other areas of the Bradford district, he said.

The Council agreed to ask for further details about the proposal to close the Ilkley office.

### TOWN HALL FUTURE

Following confirmation that the future use of Ilkley Town Hall as a district office of Bradford Metropolitan was being reviewed by Chief Officers, Ilkley Parish Council is to press for better use of the building.

Last month it was revealed that district offices might close if they were found not to function efficiently. They included, Ilkley, Shipley, Bingley and Keighley.

At that time the Leader of the Council, Cr. B. Womersley, said "we have got to make the district offices properly functional or we have got to merge them."

"The general impression is that the district offices are not functioning properly, so we shall have to make them more effective or abolish them altogether," he said.

Cr. Womersley said it was a big step to take and the Council wanted to make the right decision as and when they knew the full facts. "We have got to try and look at the efficiency and the effectiveness of the department in the district and this is what we are going to do as far as the area offices are concerned," he said.

Clerk, to Ilkley Parish Council, Mrs. P. M. Fisher had been told by the Metropolitan Council's Chief Secretary that because of the financial climate every chief officer had been asked to review services with a view to making economies. So far there was no Council policy regarding this matter as the Chief Officers were still preparing their reports, said Mrs. Fisher.

Cr. F. G. Lambert said the Metropolitan Council which owned the offices at Ilkley should make better use of them instead of renting accommodation in Bradford. "They should not be closed down and allowed to rot," said Cr. Lambert.

Cr. C. D. Poole said Ilkley was the most over-rated area when compared with other districts within the Bradford Metropolitan area. He felt concerned that the Parish Council only learned of these moves through Press reports. About forty people worked at Ilkley Town Hall and they would no doubt now be thinking what sort of cuts would be made. He agreed there should be efficiency and economy and this should be done by basing more workers at Ilkley instead of at Bradford.

Chairman to the Council, Mrs. M. Renton said it was not known how this matter was "leaked" to the Press and would agree with any proposal to de-centralise local government at Bradford. She thought the Parish Council should remind the Metropolitan Council that the offices at Bradford and Keighley were far away for Ilkley residents.

The Council agreed to ask Bradford Metropolitan Council to keep Ilkley fully informed of any proposals and to look closely at making better use of Ilkley Town Hall instead of renting offices at Bradford.

## 150 Object to Proposed use of Hall

One hundred and fifty Ilkley residents have signed a petition objecting to the proposed change of use of the Lecture Hall, Riddings Road, Ilkley, to an auction gallery and ancillary offices. The petition has been sent to Bradford Metropolitan District Council.

The application was made by Andrew Sharpe & Partners, Surveyors, Valuers, Land and Estate Agents, of The Grove, Ilkley.

Petition organiser Mrs. T. L. C. Davies says "There is a considerable amount of feeling in the town concerning the proposed change, since the Hall is so widely used for social leisure, youth and fund raising activities." 7.9.79

## CHURCH EXPLAINS DECISION TO LET LECTURE HALL

An explanation of the Ilkley United Reformed Church's decision to let its Lecture Hall in Riddings Road for use as an auction gallery and ancillary offices has been given this week by the Church Secretary, Mr. John H. Lund. This follows a petition with 150 signatures objecting to the proposed change of use being sent to Bradford Metropolitan Council.

Mr. Lund explained, "The building is owned by the United Reformed Church and is not a public hall, but it has been let to a variety of organisations in Ilkley as the total premises are too large for the present day needs of the church. While the fees charged have been of considerable help towards the running costs they have not been sufficient to cover all the necessary costs of heating, maintenance and so on. Furthermore, the organisation and planning has involved much time being spent by church members, putting the limited resources of the church, both of finance and manpower, under considerable strain.

"With the current rate of inflation and the staggering increase in heating costs, the running costs were expected to be insupportable. The opportunity to let the building on a limited lease of fifteen years was therefore welcomed," said Mr. Lund.

"We regret that the Lecture Hall may not be available to Ilkley organisations and ask them to appreciate our position."

"The church will retain ownership of the whole site and buildings. It will continue to worship in the church and will continue all its other activities in the other buildings remaining under its control," Mr. Lund concluded.

The application for change of use has been made by Andrew Sharpe and Partners, surveyors, valuers, land and estate agents, of The Grove, Ilkley. 14 SEP 79

## ASKING CHURCH TO TALK OVER DECISION TO LET LECTURE HALL

Ilkley United Reformed Church has been requested to reconsider its decision to let its Lecture Hall in Rhyddings Road on a fifteen year lease as an auction gallery, or at least to allow the organisations using the hall at the moment to discuss the matter with them.

In a letter to Mr. J. H. Lund, the Church Secretary, Mr. F. C. L. Davies, of Parish Ghyll Drive, Ilkley, who organised the recent petition about the matter, expressed thanks for the explanation of the church's decision which appeared in the "Ilkley Gazette" last Friday.

"I have no doubt that everyone will appreciate and indeed sympathise with the problems which you describe concerning the ever increasing costs associated with maintaining and heating the building. As it is a building which apparently the church does not need at the present time for its own use, it is obviously not an economic proposition if the fees charged to the organisations using it do not even cover the running costs. Furthermore, although one would not expect the church to be motivated solely by commercial consideration, one would understand the church wishing to make the most efficient use of its resources and to generate profit from the letting of surplus buildings," he said.

"The church's problem therefore is most readily appreciated and its need to take action strongly endorsed. It is, however, most distressing that:

(i) the church is contemplating such a fundamental change of policy concerning the letting of its buildings. In the past the organisations which have been permitted to use the building have all provided some form of community service and as such have presumably been "good neighbours" for the church.

(ii) the church did not see fit to discuss its problems with the current tenants before reaching its final decision. Although essentially non profit-making organisations, the current users may well have been able themselves to help the church lessen the financial burden of its premises.

"No doubt there were very good reasons for the church's actions with regards to both these points, but I am sure that you can appreciate the reaction that your decision, and the manner in which it was reached, has generated among a large number of Ilkley residents.

"The Lecture Hall has for many years been a centre for the activities of a large number of social, leisure, youth and community groups all of whom have benefitted enormously from the availability of the accommodation at a realistic rent. Now all are faced with finding alternative premises and it is certain that a number of them will be unable to do so and hence may have to disband.

"Would it still be possible for the church to reconsider its decision or least hold discussions with any interested parties? The letter concluded.

An application for the change of use of the Lecture Hall to an auction gallery with ancillary offices has been made by Andrew Sharpe and Partners, surveyors, valuers, land and estate agents, of The Grove, Ilkley. 21 SEP 79

## Correspondence

### Local Government

Sir, Many people throughout the country are dissatisfied with the present structure created by the L.G.A. 1972 but, in the British tradition, do nothing about it except complain.

This feeling of dissatisfaction is evident in Ilkley where not only have our services deteriorated at increased expense but we also suffered from the manner in which Bradford applied the equalisation of rates principle, i.e. our rates increased to benefit Bradford but our rateable values were not reduced to match theirs.

The time has come, surely, to make a stand for freedom from bureaucracy and to regain control of our own locality. Whilst it may be too costly to return to the system of Urban and Parish Councils that we knew, a Wharfedale District Council is not beyond the bounds of possibility and this could bring together those towns and villages on both sides of the Wharfe that share a degree of compatibility.

Numerous groups exist throughout our area but fragmentation provides irritation rather than the strength necessary to effect changes in the 1972 Act and I suggest that the first steps should be to form an association with representatives from every interested group. This association could then provide powerful support to our present local elected councillors who are too often prevented by the Act from taking positive action.

Are your readers interested or do they prefer to continue as now?

C. D. POOLE  
15, Princess Road, Ilkley. 7.9.79

### Local Government

Sir,—The prospects held out in Capt. Turner's letter last week are not very inspiring.

We got Local Government re-organisation because the Government thought that it would be good for us, and because electors were unaware of the consequences. We will have to get out of it by our own efforts.

Changes in legislation are often hastened by strength of Public Opinion. I doubt if Bradford would get many votes in Ilkley today, whereas a Parish Council committed to getting Ilkley out of Bradford would be widely supported.

W. D. FISHER  
Coniston,  
24, Ben Rhydding Road,  
Ilkley. 21 SEP 79

FRIDAY, 14 SEPT., 1979

## CORRESPONDENCE

### Local Government Act Has Proved To Be An "Expensive Failure"

Sir, We strongly support Mr. Poole's opinion about the Local Government Act of 1972 and like him we advocate separation from Bradford. The Act, of 1972 has proved to be a very expensive failure. From Ilkley's point of view the Act has not produced either efficiency or economy.

Our Group has for the last four years tried to point out some of the shortcomings of the local Government reorganisation. In particular it is not local government.

The Ilkley Parish Council, under the previous chairman Councillor Turner, and under its present chairman, Councillor Mrs. Renton, has taken and is taking steps to increase its authority and give a lead to its electorate. We hope and expect that progress will continue along the road until Ilkley and district is once again free from Bradford and able to manage its own affairs in the best interests of all the residents.

We support the Parish Council in the course of action it is taking. The Parish Council Consultative Links panel has its first meeting on 20 September. On this occasion local groups will have an opportunity to discuss questions with them.

We think that this initiative should be given an opportunity to work before considering forming any new group as suggested in Mr. Poole's letter.

W. D. FISHER  
Chairman  
Ilkley and District Rate,  
payers Action Group  
24, Ben Rhydding Road,  
ILKLEY.

### "We Should Pursue Dis-Engagement"

Sir,—Your correspondent's letter under the heading "Local Government" expresses sentiments with which I wholeheartedly agree.

Although I do not know of any published figures in this respect, there can be little doubt but that the amount Ilkley contributes in rates far outweighs the value of services provided.

It can be argued that we should be unselfish and not begrudge an additional burden to ease inner city problems for those less fortunate than us in terms of environment. However, I reject this view in relation to rates—a tax levied on a restricted section of the community and with very limited regard for ability to pay.

If rates have any justification it can only be as one step from individual self help, i.e. community cost sharing in relation to basic services particular to that community. Our involvement with Bradford is a far cry from this.

In the field of services small is still beautiful. We should pursue dis-engagement with all possible haste.

W. J. WARD  
'Lordswood',  
8 Lakeside Close,  
Middleton.

### Local Government

Sir,—I was very pleased to read Mr. Poole's letter in last Friday's Ilkley Gazette.

It was such a great pleasure to see so sensible a suggestion being put forward about Local Government. I can only offer my support and hope others will follow.

A. P. GARDNER  
9 Lakeside Close,  
Ilkley.

### Tired of being An Outpost

Sir,—Councillor Poole is to be commended for his letter, to the Gazette, on Local Government with which few will disagree; we are all tired of being an outpost of empire and of paying heavily for it.

The legal position, however, would have to be established as both Bradford Metropolitan Council and North Yorkshire would be involved, the former not likely to yield up the "jewel" of its collection easily.

Furthermore, we would be in the position of "setting up house" again, having been sold up and been found other accommodation (expensive and far from satisfactory). This would involve purchasing new equipment considerably more expensive than that which we once owned. What, for instance, is the cost of a new dust cart and how much would we have to pay to set up a new administration?

However, having been something of a Devil's Advocate, I look forward to the day when the hub of the district is not fifteen miles away; when our rates are not used to finance projects of little use to Ilkley inhabitants and, we are, once more, in possession of our own home.

E. M. INGLE  
21 Wheatley Avenue,  
Ben Rhydding,  
Ilkley.

### A Lead Balloon

Sir,—The Prime Minister has made it plain that existing organisational legislation will not be repealed if it is capable of amendment, etc., to resolve evident imperfect results.

For the Prime Minister's review of Local Government legislation, Lord Bellwin has been recruited with his exceptional West Yorkshire expertise. Already on 5 September the National Press has announced that over 300 Government controls over Councils are to be scrapped. Improved decentralisation and liaison between the three tiers of Local Government should follow.

Already the District has spent much development money in our Parish; for example, £2 million on three projects (see Gazette 29.12.78 Page 7). The standard of services to the Parish has deteriorated somewhat since 1974 because of rampant inflation, as elsewhere in Britain, but should revive again within the life of the present Parliament, as the nation rounds prosperity corner.

The destructive notion of a Pan Wharfedale District Council seems to be a lead balloon in practice, unworthy of serious consideration.

A. E. TURNER  
Ploverfield,  
Ben Rhydding.

## PLAN TO USE CHURCH HALL AS AUCTION GALLERY APPROVED

Plans for the conversion of the church hall in Riddings Road, Ilkley, into an auction gallery with ancillary offices have been approved by Bradford Metropolitan Council's Development Control Panel.



## Renting A House In Ilkley Cost £55 A Year

### 100 Years Ago

For a yearly rent of £55 residents of the Ilkley district in 1879 could live in a large dwelling house with magnificent scenery, uninterrupted views and with gardens all round. The property would contain dining, drawing and breakfast rooms, bathroom and two toilets.

Waggonettes, buses, cabs, dog carts and other conveyances, could be obtained at the Rose and Crown Inn, and at Ben Rhydding. Tickets to fish in the River Wharfe at 2s 6d could be obtained at the Rose and Crown Inn.

People could have a Turkish bath or a Hydropathic Bath of every description including Electro Medical and Compressed Air, daily at Ilkley Wells House.

### 75 Years Ago

Ilkley Swimming Club held its annual gala when the building housing the Victoria Baths was full to capacity with spectators. The place soon became like a Turkish Bath because of the crowd and some were forced to go outside before the affair was half over to obtain a breath of fresh air.

Comment was passed on the need for new swimming baths in Ilkley.

A quantity of ironwork arrived in the town with which men began assembling a travelling crane to be used in the construction of the Brook Street railway bridge.

Dexter's "Key West"—"undoubtedly the best 2d cigar on the market" was advertised.

Shuttleworth's, of Brook Street, Ilkley, were advertising their new pictorial guide to Ilkley, Bolton Abbey and vicinity at 6d.

### 50 Years Ago

The Ilkley Tradesmen's annual cricket match held in ideal weather conditions was an outstanding success.

Known as "Black Hats v. White Hats" because of the distinguishing headgear of the respective sides, prizes were offered for the best comic costume both amongst the players and the children.

A large crowd of spectators followed the play, and amongst them were a considerable number of members of the Australian Rugby League tourists, whose headquarters for the winter were in Ilkley.

The Ilkley Municipal Orchestra not only had a successful season from a musical point of view, but also achieved a remarkable financial success. This was despite enjoying a season of only six weeks, and with considerably smaller numbers than in previous years.

Several Wharfedale farmers who were invited to make a prophecy on what the coming winter was going to be like voted that it would be a hard one.

### 25 Years Ago

The condition of Castle Road, Ilkley, was causing concern to the local education committee.

Situated on Castle Road was a Day Nursery and a Nursery School and parents and children were presented with difficulties during bad weather because of the state of the road. Pot-holes filled with water on both the footpath and unmade road and caused children to wade through ankle deep mud.

The Committee was pressing for something to be done about the road. However, until it was known what class Castle Road was to be it was impossible to carry out any work. It was suggested that Castle Road should become part of the town by-pass road, and approval was given by the Ministry of Transport to the Ilkley Council for the making up of the road as a private street.

A recommendation was sent from the Committee to the County asking that something should be done as quickly as possible.

There was a remarkable growth in the number of people taking advantage of Evening School classes in the Ilkley Urban District.

When enrolments were completed there were 900 names on the registers. Most popular classes were:- woodwork, rug making, dressmaking, cake decoration and crafts. 14-9-79

## OLICANA MUSEUM AND HISTORICAL SOCIETY Winter Lecture Programme 1979 — 80

20th SEPTEMBER (THURSDAY)

"York Castle Museum"

Mr. A. L. Benson, Assistant Curator

18th OCTOBER

"The Current Work of the West Yorkshire  
Archaeological Unit"

Mr. Philip Mayes, County Archaeologist

15th NOVEMBER

Elsie Fletcher Memorial Lecture

"Olicana — Roman Ilkley"

Brian Hartley M.A., F.S.H.

17th JANUARY 1980

"Coaching Days of England"

Mr. K. F. Day

21st FEBRUARY

"London Waterfront Archaeology"

Mr. G. Milne

20th MARCH

"Alfred Atkinson of Huby, Edwardian Photographer"

Mr. C. Gordan

17th APRIL

"Roman Mosaics in Britain"

Mr. Terence Suthers B.A., A.S.I.A.D.

Followed by the Annual General Meeting

All lectures are held at All Saints Church Hall. They are  
always illustrated and are followed by light refreshments.

Talks commence at 7.30 p.m.

14 SEP 79

NEW MEMBERS WELCOME. SUBSCRIPTIONS £1.00

## OLICANA SOCIETY VISITS PENDLE HERITAGE CENTRE

The Olicana Historical and Museum Society visited the Pendle Heritage Centre, Park Hill, Barrowford, Colne.

The Centre, opened in 1977, consisted of two parts — the Jacobean building, which housed the Museum, and the Georgian building, which housed the Local Studies Section.

The Jacobean building (which replaced an earlier one) was built in 1661 by the Barrister family (an ancestor of Dr. Roger Barrister, the athlete). It was rather an austere building and lacked the decoration that was associated with that period. The original porch remained, but the door had been removed; revealing the stone seats situated on either side. The downstairs room was devoted entirely to the cotton industry whilst upstairs there were displays of old photographs, pamphlets, newspapers, slides and maps and local items chiefly of the Victorian period.

The Georgian building was added in 1775 although originally it was a wing of the Jacobean building. It had a fine Renaissance doorway complete with a triangular pediment and stone architrave. Locally, the house was known as the Clerk's Residence as it was required by Barrowford Town Council for its Clerk. It was now used mainly by school children and evening classes as a centre for classes and private study.

Nearby was an original 17th century barn. Ten thousand pigeons used to live in the roof and supplemented the diet of the Barristers.

Members were impressed by the well stocked bookshop which specialised in local publications, postcards and prints. Tea and biscuits were served in the small cafe which was in the original kitchen.

## APPEALING FOR VOLUNTEERS TO TEACH REFUGEES

The group of Vietnamese refugee families which arrived in Ilkley in July this year will soon be leaving their temporary home at Hill Top, West Wood Drive, to make way for another group which will arrive in October.

During their stay at Hill Top the refugees have been attending Ilkley College every morning for two and a half hours to learn spoken English, with the help of local volunteers. The arrival of the new group will mean more voluntary help will be needed to teach them English. Volunteers should be able to offer two or three mornings a week, between the hours of 9.00 and 11.30 a.m. for between six and ten weeks.

Anyone interested in helping should contact Eileen Mellor at Ilkley College (Ilkley 609010 ext 218).

14 SEP 79

## Improvement Of Junction To Be Given Priority



Priority is to be given in the Ilkley Traffic Management Scheme to improving the junction of Springs Lane, Station Road, Cowpasture Road and Chantry Drive (pictured here).

County Councillor, H. V.

Haddrill told members of Ilkley and District Road Safety Committee at their meeting on Wednesday night that it was the intention of the Transportation Committee to get on with the improvements as quickly as they

could.

Other areas in Ilkley which would be given priority would be the junction of Trafalgar Road with Railway Road and the area by the shops in Ben Ridding.

Cr. J. A. Wilson, Chairman,

reminded members that it had been three years since Committee members had first met with representatives of the County Council and expressed their concern about certain dangerous areas

28 SEP 79

— FRIDAY, 28 SEPT., 1979

### CORRESPONDENCE

## The "Roots Of Disaster" Have A Good Hold But ....

Sir.—In view of the support given—apart from a lead balloon expert—to my suggestion of a Wharfedale District Council I would like to clarify several points that have arisen.

1. With regard to cost, Ilkley U.D.C. handed over to Bradford a great deal of plant, buildings and personnel at no cost. We should have them returned in no worse state than in 1974, also at no cost.

2. A new organisation was not proposed, merely an assembly of representatives from existing groups—Community Associations, Civic Society, Chambers of Commerce, Womens Institutes, Friends of the Earth etc—to fight a common battle rather than parochial matters.

3. The comment that Ilkley had received £2 million benefit is irrelevant, ratepayers here subscribe this annually and, additionally, such sums are probably funded over periods up to 40 years. Rates also attract Rate Support Grant.

4. Not one of the over 300 contracts that have been removed will release any authority to Ilkley. If anything, the removal will give more power to District Councils.

5. No less an authority than Councillor Womersley has stated that Rates have increased to a greater extent than inflation. How, then, can inflation be blamed for the neglect and deterioration?

The defeatist attitude exhibited by Mr. A. E. Turner is, in the opinion of many, the very reason for the present situation and faint hearts will not accomplish rectification. Five years have passed since reorganisation and the roots of disaster have a good hold which only determined effort can release. If that effort is not forthcoming then only, I would agree, my proposal would be a non-starter.

C. D. POOLE

15, Princess Road,  
Ilkley.

### CELEBRATING ILKLEY'S LINKS WITH ROMAN TIMES

The programme of the year's events to mark the 19th centenary of Ilkley's establishment as a Roman fort has now been announced. The aim of these events organised by local societies and associations, is to publicise the Roman origins of the town, to raise money for charities and to finance the permanent marking-out of the Roman site for the benefit of visitors to the town. Donations have already been received from organisations ranging from the Chamber of Trade to the Townswomen's Guild, and any further support would be welcomed. The programme is as follows:

On 13 October there will be a "Roman Bonfire" and Fireworks Display organised by the Wharfedale Lions Club; On 18 October a lecture on Dalton Parlours Roman Villa by Mr. P. Mayes, organised by the Olicana Museum, and Historical Society; From 5-10 November a Building Society window display on Roman life, by the Olicana Museum and Historical Society followed on the 15th by a lecture on the Roman Fort at Ilkley by Mr. B. Hartley; On 31 December a New Year's Eve Dinner Dance at the Craig-

lands Hotel. In 1980 from 13-27 April there will be a Children's Art Exhibition at Ilkley College, by the Soroptimist International of Ilkley; on 13 June a Roman Evening, by the Wharfedale Lions Club; on 14 June a Roman Romp, also organised by the Lions; on 14 June a First Day Postal Cover by the Rotaract Club of Ilkley; and from May-June a Roman Armour and Costume Exhibition by the Manor House Museum.

Further information on the events can be obtained from Mr. S. Kerry at The Manor House Museum, Castle Yard, Ilkley.

28 SEP 79

# PARISH COUNCIL TO SEEK MEETING WITH COUNTY OVER ILKLEY TRAFFIC MANAGEMENT SCHEME

As more and more objections are raised over the County Council's proposals for Ilkley's traffic management scheme Ilkley Parish Council is to seek a meeting with officers in an effort to review the plan.

Mass yellow lining throughout the town is being resisted by Ilkley traders and whilst Councillors are to seek certain amendments to the proposals they are to press for immediate action to improve some of Ilkley's "blackspots."

Some Councillors think the Police should be asked to take more action on traffic violations and others are concerned that there is a danger of perimeter shops closing down if nearby parking is not available.

At this month's meeting of the Council, Cr. C. D. Poole said certain "blackspots" in the town should receive immediate attention but he was not convinced that double yellow lining was the answer to some of Ilkley's problems. He thought the Council should ask the Police to do something about the enormous number of people breaking traffic laws in the district.

Cr. F. G. Lambert said there were areas in Ilkley where people would take more notice if there were yellow lines but they must be kept to a minimum.

Cr. Mrs. B. J. Cussons thought there was a need for some double yellow lining in some severe areas and thought there should be a compromise between pedestrians and motorists. She feared that should there be more restrictions on the perimeter shops there might shrink and disappear altogether.

Cr. Lambert said the people who should know what was best for the town were Ilkley people and he thought a meeting should be sought with County Council representatives.

Some of the blackspots in the area mentioned by the Council included parking at Ben Rhydding village; the junction of Springs Lane, Cowpasture Road, Chantry Drive and Station Road; the junction of Railway Road and Brook Street; and outside the Health Centre

## Traders' campaign to stop the plan

Ilkley and District Chamber of Trade and Commerce will continue to oppose any plans detrimental to traders, said their retiring President, Mr. D. Copleston, at the Chamber's annual general meeting.

Mr. Copleston said City Planners had been bothering Ilkley over the past few years with ideas of mass yellow lines throughout the town, adjacent to many shopping areas. The Chamber had been campaigning to have the Plan stopped, and through the energies of two members, Mr. M. Clegg and Mr. A. Hartley, many people had objected to the Plan.

More weight had been added to their objections, he said, with the turnabout of the Parish Council who were now also against the Plan. The next stage would be a con-

sultation when a panel of County Councillors and officials would request objections to amplify their views verbally.

Mr. Copleston was pleased to report that as a result of canvassing the Chamber's membership had increased from 80 to 120 in the last three years. He asked the 30 members who attended the meeting to try to encourage 30 new members to join to bring the figure up to 150.

## Year's Events

Commenting on the past year's events, he mentioned how well supported the revival of the Black Hats v White Hats cricket match had been. Everyone who took part or watched the event enjoyed themselves and £300 was raised towards the cost of Christmas lighting in Ilkley, he said.

Early in the year a successful dinner-dance was held at the Troutbeck Hotel, Ilkley, organised by members Mrs. Margaret Booth and Mr. Maurice Booth who died in May. Tribute was paid to Mr. Booth for his work as treasurer of the Chamber and previously as an industrious member of the Trades Fair Committee. The Chamber had been pleased that the gift of an inscribed silver tray was able to be presented to Mr. Booth at the Dance for his services to the Chamber. Appreciation was expressed to Mrs. Booth who agreed to take on the duties of treasurer.

Officers elected were: — President, Mr. G. A. Peel; Vice-President, Mr. V. Dobson; Treasurer, Mrs. M. Booth. Mr. A. Hartley was elected to join the Executive Committee in place of Mr. Dobson. 28 SEP 79

## ACROSS THE YEARS

### Lovers Of Football Gathered To Form Ilkley Club

#### 100 Years Ago

Lovers of football gathered together at a meeting at the Crescent Hotel and decided to form a football club to be known as The Ilkley Football Club. Mr. P. A. Legge was elected Chairman, Mr. L. E. Goddard as secretary and a subscription was levied of 2/6d per annum. It was decided to find a venue and to arrange a few matches for the season. Some thirty gentlemen were made members at the first meeting.

Members of the Ilkley Wesleyan Sunday School Band of Hope inaugurated their winter's work at a lively well attended meeting in the Schoolroom, Wells Road, Ilkley. Several very lively temperance melodies were "heartily sung" at intervals with Mr. J. C. Naylor at the harmonium, while Mr. D. Smith and the Rev. S. D. Hillman spoke at great length on the evils of drink and the rapid strides made by temperance reform in this country.

#### 75 Years Ago

The Local Board approved the District Council's application to borrow £2,500 for the purpose of the Brook Street Extension and the New Bridge Scheme. This scheme involved the building of the New Bridge a portion of new road and the demolition of two public houses at the bottom of Brook Street at a total cost of £17,000. There had been a great deal of opposition in the town to the scheme as it was feared that too much development on the "sunny side" of the river would make people prefer to live in Middleton, leaving empty houses in the town which would increase the burden of the rates.

The Anchor Shipping line advertised fares to India at £31 for a "saloon fare" on one of their large new steamers.

Thursday and Saturday evenings were advertised as dancing evenings throughout the winter at the Bridge Pleasure Gardens, with Harry Craven at the piano, admission 6d.

#### 50 Years Ago

A huge demonstration to celebrate the centenary of Catholic Emancipation was held at Middleton Lodge, with thousands of Roman Catholics from all parts of the West Riding taking part. The crowd was estimated to be between 15,000

and 20,000. The Right Rev. Dr. Cowgill, Bishop of Leeds, gave benediction to the kneeling thousands at the climax to the two hour long imposing ceremony.

September 1929 was described as one of the most wonderful months ever enjoyed by Ilkley residents. There were over 168 hours of sunshine recorded in the month, and not one small touch of frost. The total sunshine for the first nine months of the year was 1,192 hours.

A lecture entitled "Picture Marvels of the Spirit World" was given by Mr. H. J. Osbourne of London to the Ilkley Spiritualist Mission. Some of his pictures had been taken under test conditions and showed spirit forms very clearly after being handled by non-spiritualists.

#### 25 Years Ago

The newly completed wing of the West Riding College of Housecraft, formerly Wells Hydro, was formally opened by Lady Oglivie, Principal of St. Anne's College, Oxford. The college had accommodation for 150 students, with a staff of 14 lecturers and six administrative staff.

The chapel of Hag Dyke Hostel, Kettlewell, owned by 1st Ben Rhydding Scout Group, was dedicated by the Rev. A. Edgar, Vicar of Ben Rhydding, at a service for 200 members and friends of the Group. Mr. R. Ibbetson, Group Scout Master, thanked all who had contributed to the making of the chapel, believed to be one of the highest and loneliest in the country.

The Vicar of Burley, Rev. E. Pedley, announced to his Parochial Church Council, that for health reasons he was to retire from the church and resigned his benefice. Mr. and Mrs. Pedley had served for 18 years, and were held in great affection and respect in the village. 28 SEP 79

# YEADON AIRPORT INQUIRY OPENS

7.9.79

## Cost likely to be £½ million

The inquiry into the proposed extension of the runway at Yeadon Airport, which opened at Yeadon Town Hall on Tuesday, could last two months and the bill at the end of it is likely to be in the region of £500,000.

The inspector in charge of the inquiry, Mr. Victor C. Radmore said that the regional office of the environment department had been receiving about 30 letters a day about the runway.

More than 200 objections have been received, and individuals are likely to wait a month before they can have their say. Joint owners of the airport, Leeds City Council, is among the protesters.

Sir Frank Layfield, QC, representing West Yorkshire County Council, said that difficulties faced by the airport would become more serious if the proposed runway extension was not approved.

The County Council, along with Bradford Metropolitan Council, applied for plan-

ning permission to extend the airport's main runway by 604 metres, to extend the terminal building and car parking facilities, and for compulsory purchase orders to buy 36 acres of land needed for the runway extensions.

"The airport will either go backwards or forwards. It will not stand still," said Sir Frank.

He added that the present runway of 1,646 metres is the shortest of the 20 leading airports in the United Kingdom. It prevents aircraft from carrying an economic number of passengers other than on short journeys and the aircraft which will operate in the 1980's are unlikely to use the airport economically unless the runway is extended.

# YEADON AIRPORT INQUIRY MOVES INTO ITS THIRD WEEK

The second week of the inquiry into the proposed extension of the runway at Yeadon Airport at Yeadon Town Hall has ended.

The inquiry could last two months with costs, including legal expenses and expert advice, reaching £500,000.

Mr. George Spafford, representing Leeds City Council said that the council was most unlikely to pay anything towards the scheme proposed by West Yorkshire County Council.

He said that the estimate of £12.7m, given by the County Council and based on mid 1978 prices, was inadequate. "The cost is likely to be in the region of £20m," he said.

Capital costs for airport development are usually shared by the three authorities which are members of the Airport Joint Committee: Leeds, the County Council and Bradford Metropolitan Council.

Leeds is opposing the planning application for a scheme to extend the runway by 604 metres, and to improve passenger facilities. "West Yorkshire and Bradford would have to raise the money without inflicting any portion of it on Leeds ratepayers. But it is not clear how they would do this," said Mr. Spafford. He added that there was little need for the extension which would increase noise for many people living near the airport. "Airports cannot be imposed on communities without regard to the implications for locality. These are so grave that the extension should not be allowed. Manchester Airport can meet the area's demands for air transport until end of the century," he said.

Mr. Spafford suggested that if the application was refused, the airport could apply to extend the runway by 90 metres to meet Civil Aviation Authority safety standards.

Sir Frank Layfield, representing the County Council, said that the Government's 1978 White Paper on Airports policy represented an important development since 1970, when the first application for a runway extension was refused. "We now have a policy on regional aviation and the proposals accord with this policy in every respect. This inquiry will be a first-class test of whether the Government acts according to its policy," he said.

The White Paper supported the development of specific regional airports including Leeds-Bradford, as a contribution to the economy.

Sir Frank said that an extended runway would create more than 400 jobs at the airport.

The County Council expected that by 1987 800,000 passengers and 16,000 air movements would pass through, and there would be non-stop flights to Eastern Europe and Greece. The airport would make a steady profit from 1987.

Continuing his opening statement Sir Frank referred to the Government White Paper on airport strategy up to 1990.

The report said the Government did not consider demand for air services likely to be such as to justify massive expenditure on building a new airport in the region. "This is a rejection of a major thesis put forward at the last inquiry into this extension ten years ago," he said.

He continued: "Whatever the solutions are, it is obvious they are not to be found in a new airport. I am sure it will not save you from having the argument rehearsed again by people who will say the Government has got it wrong."

It was quite clear from the report, said Sir Frank, that provided the runway was extended the Government saw a

major role for Leeds-Bradford Airport for short haul schedule and charter services. He said the national policy had been decided on since the last inquiry after extensive review. A part of the plan was for regional diversion—taking as much air traffic as possible away from heavily congested London and the South-East. It was obvious the Government also recognised the value of the economy of having regional airports, said Sir Frank.

International aerospace expert Air Marshall Sir Ivor Brown said if British Airways pulled out of Yeadon Airport and the runway were extended independent airlines would bid for the routes and operate them at great intensity.

Sir Ivor said: "In the short term it depends on the aircraft available and able to operate from a restricted runway. Independent operators with turbo-prop planes are likely to jump in. However other actions are bound to be delayed because of the planning blight over the runway."

He said the British Aerospace 146 jet, now in production, would be able to carry out present and intended scheduled flights even if the runway was not given extra room.

Sir Ivor said the 146, due to come into service in 1982-83 would carry about 100 passengers and be very economic over short hauls. But as yet no UK operator had announced plans to operate it.

### Diversion of Flights

The diversion rate for flights using the airport is seven times worse than the average for Britain's 35 top airports. This alarming statistic was given to the inspector by the airport director, Mr. Geoffrey Sellar. Diversions cost the airport a considerable amount of lost revenue and also made some travellers unwilling to use the airport, he said.

However, the new runway, with improvements to the lighting and other safety facilities, would cut this diversion rate dramatically, he forecast.

Mr. Sellar said the latest figures produced by the Civil Aviation Authority showed that in 1977 Leeds-Bradford suffered the worst diversion rate of any of the 35 airports analysed. Compared with an average rate of 51 diversions per 10,000 intended landings, Leeds-Bradford had a rate of 363.

Luton — another diversion blackspot — had 168, East Midlands 41, and Liverpool only two.

One reason for the airport's poor diversion record was its situation on top of a hill, the highest position of any major UK airfield. Other reasons were the short runway, the simple approach lighting system, and the present position of the instrument landing system. "Although the weather at Leeds-Bradford Airport compares unfavourably with that experienced at most other UK airports, the conditions are not insuperable from an aviation point of view," said Mr. Sellar.

He said: "It is anticipated that the proposed improvement in operational facilities associated with the runway extension would enable airlines to operate normal services under almost all weather conditions. "It is of paramount importance that passenger aircraft movements should be reliable. A

large percentage of scheduled services passengers fly from Leeds-Bradford to connect with foreign flights from major hub airports, and a delayed flight from Leeds-Bradford could result in extreme inconvenience to passengers."

Mr. Sellar continued: "The present diversion record of Leeds-Bradford Airport undoubtedly motivates many travellers to use other modes of transport. The enhanced reliability of airline services resulting from the improved operational facilities would, in my opinion, increase public willingness to fly and thereby generate increased passenger use of the services available. The cost of diversion varied from operator to operator but to divert a Boeing 737 from Leeds to Manchester and transport the passengers by road cost the airline about £500 at 1978 prices.

The airport itself lost 559 movements in 1978, with a drop in revenue of nearly £60,000. Of the diversions or cancellations 72.6 per cent were due to poor visibility caused by fog or low cloud. The improved technical facilities proposed led him to predict confidently that there would be a 'spectacular reduction' in the diversion rate and he believed it possible that at least two-thirds of the aircraft at present diverted would be able to operate normally. In 1978 this would have meant 260 aircraft with a revenue of £28,000 in fees and charges.

Mr. Sellar also revealed that if the runway was not extended and the operational length had instead to be reduced because of the additional safety requirements now demanded, some operators would pull out.

British Airways Viscounts would no longer be profitable, Air Anglia's operations would be "uneconomic, restricted and reduced," and Britannia Airways — which operated flights for Thomson Holidays — had stated that "any further reduction would restrict our operations to an uneconomic level."

"This would inevitably mean that the tour company involved would wish to move their operation to another airport."

The overall result would probably be a reduction in passenger movements from 332,000 in 1978 to between 107,000 to 145,000 per annum after five years. 14 SEPT 79

5/10/79

# PARISH COUNCIL DECIDES IT CAN NO LONGER SUPPORT CASE FOR AIRPORT EXTENSION

As the public inquiry into proposals for the extension of the runway of the Leeds-Bradford Airport reached its fifth week, Ilkley Parish Council decided to withdraw its support for the extensions.

The inquiry is expected to last several more weeks and it is the intention of the Council to prepare a case for submission to the Inspector.

By twelve votes to six the Council agreed in the light of the changed economic circumstances due to the oil crisis to ask both Bradford Metropolitan Council and the West Yorkshire Metropolitan Council to reconsider the position and not to go ahead with the runway extension.

The move made by the Council's General Purposes Committee was supported by the majority of councillors including several new members. One of these Cr. E. S. Gardner said he could not agree with the previous Council's support for the extension and was against such moves.

Another new Councillor Mrs. I. Carney, of Menston, also spoke against the extensions saying aircraft caused a lot of noise over Menston, noise which reverberated through the hills. "We do not want the extensions," she said.

Vice-Chairman to the Council, Cr. K. G. Johnson, of Burley, who attended a meeting of the Burley Community Council last week said there had been a vote of dissension over supporting the extensions. He thought that during the last few months people had changed their minds and no doubt this had been helped by the financial climate. British Airways were wanting to use aging aircraft which were exceedingly noisy and which would only operate from an extended runway. If British Airways pulled out of the airport then Cr. Johnson felt sure independent airlines would move in using aircraft which did not require an extended runway. Cr. Johnson went on to suggest that the Council should present its case before the inquiry now taking place.

Agreeing with Cr. Johnson, Cr. C. D. Poole reminded the Council that the inquiry was now in its fifth week and thought the Council should have done something before now as it was in May that the new Council was elected.

"I think we are putting forward our personal opinions and not those of the majority of people we are supposed to represent and I don't think we can do this without a referendum," said Cr. Poole.

Another Menston Councillor said there had been a unanimous vote in Menston against the extensions and that the £14m to £20m glibly talking about could be better spent on what Bradford Metropolitan Council was cutting.

At both the General Purposes Committee and the Council's monthly meeting, Cr. C. H. Scaife stressed to need to keep within the Government's spending cuts and to oppose a project costing in excess of £20m which could turn out to be nothing but a "white elephant."

The proposed extension would directly affect Ilkley people through rates and taxes, increase in traffic flow generated by increased flights and the noise of aircraft flying overhead, said Cr. Scaife. Supporters claimed that the airport would close if the runway were not extended, because modern larger aircraft could not operate from it. British Airways had withdrawn its services to the continent because they were uneconomic, and now intended to curtail its remaining services said Cr. Scaife.

The services would probably be uneconomic without larger aircraft. Other airlines, Dan Air and Air Anglia, now operated more flights to the continent than were previously provided by British Airways. He doubted whether the extension would lead to more business, more freight, more exports, etc., as was claimed. It was nothing but a myth about the amount of exports flown from the Leeds-Bradford airport, said Cr. Scaife. All the exports were taken by truck to London, he said.

The trend was towards larger planes with more seating capacity. With fuel rationing other airports were either having to fill more seats or reduce the number of flights. It was unlikely that a major foreign airline would operate from Yeadon. Fog was a problem and the airport had a high diversion rate, he went on.

Cr. Scaife felt that rate-payers and taxpayers would have to pay the cost of the extension, likely to be in excess of £20m and that the money would be better spent on creating new manufacturing jobs, or better still, reducing the burden of rates and taxes. He did not envisage an increase in schedule services but rather in the sue of the airport as a charter holiday base, which would have a detrimental effect on the UK economy.

Cr. J. M. Shelton expressed concern that if each incoming Parish Council constantly reversed the decisions of its predecessor, the Parish Council would ultimately lose all credibility.

Cr. Johnson is to prepare the case on behalf of the Parish Council for opposing the runway extension proposals.

## TURNED DOWN ROAD JUNCTION REQUEST

A suggestion that a box junction be installed near the pelican crossing in Main Street, Burley-in-Wharfedale, to enable motorists from Station Road to get on to the A65 more easily, has been turned down by the Department of the Environment.

Reporting at the Ilkley and District Road Safety Committee's meeting, Mr. C. B. L. Ford, District Road Safety Officer, Bradford, said the Department of the Environment felt a box junction would not alleviate the situation there.

Cr. Mrs. M. Renton pointed out it was a very difficult junction and asked why the Department thought it was not necessary to install a box junction.

The Department feel it was adequate said Mr. Ford.

He agreed there was a problem created when drivers on Main Street failed to leave a gap to enable motorists to get out of Station Road, but he thought it depended on courtesy on the other drivers behalf.

## Addingham call for better lighting

Improvements to the poor lighting in Main Street, Addingham, are to be sought by Ilkley and District Road Safety Committee.

The Committee is to seek the help of the Ripon, MP, Dr. Keith Hampson, after an Addingham resident had expressed concern about the danger of trying to cross the road during darkness.

The Committee's Chairman Mr. J. A. Wilson, said if there was a danger the Committee should seek improvements.

## WATER AUTHORITY PROPOSALS CAUSE CONCERN

Proposals by the Yorkshire Water Authority for direct billing instead of it being carried out on their behalf by Bradford Metropolitan Council are to be questioned by Ilkley Parish Council.

The Council is to ask how much more it is going to cost people to provide a direct billing facility.

Cr. C. D. Poole said he had been assured some time ago that if the Authority adopted direct billing it would not cost any more. However, about a month ago the Authority advertised for staff to set up a direct billing department. "If you have additional staff then consequently costs must go up," said Cr. Poole. If this was carried out did it mean Bradford Metropolitan Council would reduce its staff which had been responsible for carrying out part of the direct billing, incorporated in the rate demands, for the Yorkshire Water Authority? asked Cr. Poole.

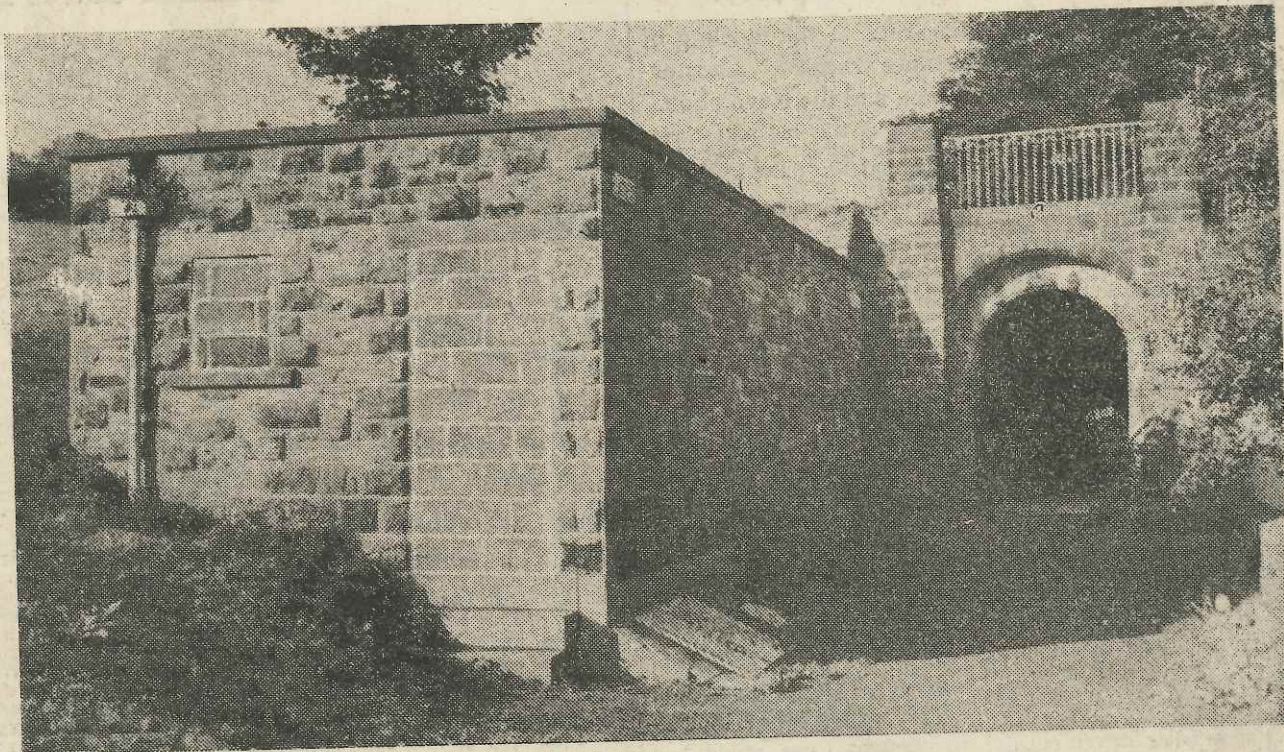
Direct billing by the Yorkshire Water Authority would entail more administration, envelopes and postage and Cr. Poole wondered if the Authority would provide the same facilities for payment. At the moment payments could be made over a period of time but if the Authority decided to demand full payment at once what about the people who would not be able to meet that demand? asked Cr. Poole.

"I think the Yorkshire Water Authority is definitely going against the Government's recommendation for economising," said Cr. Poole.

Cr. J. M. Shelton said it would appear to be the old argument of non elected bodies riding rough shod over everybody. He pointed out that during the days of the former urban Council it was cheaper for the Council to do the billing for the former Rombalds Water Board & he thought it would be so today.

The Council unanimously agreed to raise the matter with the Yorkshire Water Authority and to seek the support of the West Yorkshire Metropolitan County Council and Bradford Metropolitan Council. The Council also decided to ask the Ripon MP, Dr. Keith Hampson, to raise the matter with Central Government.

## SEALED OFF TOILETS TO BE REFURBISHED



The sealing off of the doors and windows of the public conveniences adjoining the riverside footpath between New Brook Street and Riva-dale View at Ilkley has aroused curiosity and created speculation that they may be demolished.

This has been rebuked by the District Environmental Health Officer, Mr. M. J. Petts. Mr. Petts told the Gazette this week that due to the main drainage scheme

for the west side of Ilkley the original drainage system for these public conveniences had been made obsolete. Whereas the old drainage system for the toilets ran in front of the building the line of the new main drainage system ran at a much higher level and behind the building. Consequently the public conveniences had not been in use for nearly two years.

Mr. Petts said the extensive damage caused by van-

dals to the interior of the building during the long period it has been out of use had partly contributed towards the building being sealed off. The other factor was that there was no drainage system. Before the conveniences could become operational again Mr. Petts said the interior would have to be completely refurbished and a new drainage system to connect up with the main drainage system would have to be

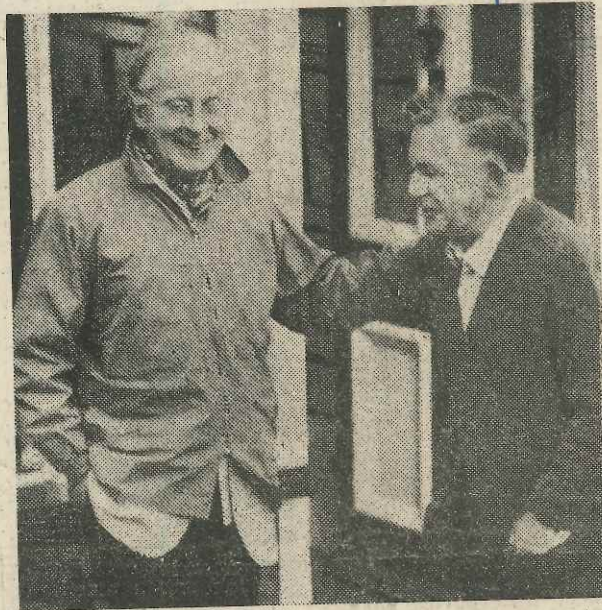
installed.

A meeting on the site between Mr. J. R. Hobson, Area Environmental Health Officer, and an official from the Drainage Department of Bradford Metropolitan Council is to be held next week.

Picture shows the sealed off public conveniences at the bottom of the embankment to the small park on the east side of New Brook Street.

## Chance Meeting With Archbishop Of Canterbury

5/10/79.



A chance meeting with the Archbishop of Canterbury, Dr. D. Coggan was experienced by Mr. C. Dougherty, of St. Helen's Way, Ilkley, whilst visiting Dent with a Holiday Fellowship party staying at Newfield Hall, Airton.

"I was walking up the main street of Dent when I noticed a party coming down the road. I said to my friend I think that is the Archbishop of Canterbury. He asked me to make certain because, being a keen photographer, he wanted to take a picture," said Mr. Dougherty.

Mr. Dougherty approached the Archbishop and said "excuse me, can you remember living in Ilkley" and he replied "yes, it is about 17 years ago and I was there for about five months whilst waiting for my house in Bradford to be prepared on my appointment as Bishop of Bradford."

Mr. Dougherty recognised his voice and said "you must be the person I think you are" and he replied "I am."

Photograph by Howard Somerville, of Ealing, shows Mr. Dougherty (right) with the Archbishop.

## ACROSS THE YEARS 5 Oct 79

### Scheme For Cricket Field In Town Centre Under Discussion

#### 100 Years Ago

A meeting of interested parties was held at the Crescent Hotel to discuss carrying out a suggested scheme of having a cricket field near to the centre of the village, at the rear of the Crescent Hotel which could be entered from Leeds Road. The completion of such a scheme would involve considerable expense as the ground would have to be re-laid an estimated cost being £120, it was stated. The meeting was unanimous as to the desirability of the change, but it was felt that ways of financing the scheme should be properly explored before further steps were taken.

Four Ilkley boys were brought before Otley Police Court charged with damaging the hedge at the Crescent Hotel, Ilkley. Mr. George Lee, of the Crescent Hotel, said that his cattle got out of the field at the back of the hotel and upon investigation he discovered that about eight yards of the hedge had been chopped down to ground level. The boys were seen cutting down the hedge at a later date and taking the wood away. The boys were fined a total of 11s. 6d. including costs.

#### 75 Years Ago

A well attended meeting of Burley ratepayers was held to hear an explanation from their local Council as to why they wished to move to more convenient and more comfortable quarters at Burley Grange. The Council had the opportunity of purchasing the Grange estate of 5,270 square yards together with a substantial building from the executors of the late Mr. James Hodson. The project aroused such public interest that the township day schools were packed to the doors. The meeting was chaired by the Chairman of Burley Council, Mr. J. H. Foulds. After a lengthy discussion it was unanimously agreed that to acquire the property was to the advantage of the whole village and would be well worth the expenditure. Mr. R. Walls said it would be a step towards making Burley the best kept village in the country.

A plea was made for the welfare of the Ilkley and Wharfedale Orphanage. It was expected there would be a deficit of over £100 at the close of the year, and people were asked to lend their support to this worthy cause.

#### 50 Years Ago

A Black Hats and White Hats fancy dress ball was held in the Winter Gardens with more than 300 people from the town attending. Streamers in black and white formed an attractive decorative scheme from the balconies, but there were fewer black and white costumes than in previous years.

Costumes were judged by Mr. Harry Pickard and Miss Norman Mr. Milner and Mr. Dobson. First prizes were awarded to Mrs. Waterhouse (Humorous), Mrs. Binns (Historical) and the whist drive first prize was awarded to Mrs. Moisiey. The stewards in charge of the whist drive were Messrs. J. M. Tomlinson, G. W. Thompson, J. Shearsmith and S. Rayner. The MC's for dancing were Messrs. C. Leighton, S. Perks, A. Hudson and E. A. Hornby.

The occupants of a flat over a Brook Street furnisher's owned by Mr. J. W. Charlesworth had to escape in their night attire when fire broke out in their flat. Mr. John W. Denny with his wife and mother escaped thanks to a timely warning from P.C. Burton who was on patrol in Brook Street at 2.30 a.m. and heard a crackling noise. Ten minutes later they would have been trapped by the flames.

#### 25 Years Ago

Addingham Parish Council decided at their monthly meeting that they had taken within their powers all possible action to prevent vandalism in the Memorial Close.

Mr. C. Wall had suggested that the gardens should be locked at 7 p.m. each night and that anybody found in the gardens after that hour should be prosecuted. Children had been seen on the roof, and locks had been broken and money taken from the lavatories. Mrs. J. B. Ives said that to lock the gates would only make matters worse.

The first four Girl Guides of the newly formed 5th Ilkley company were enrolled by District Commissioner, Miss K. M. Coffy in the Assembly Hall. The Captain of the new company was Miss Sheila Marks, and the Lieutenant was Mrs. Evans.

Mr. G. Teasdale, secretary and treasurer of the Olicana Museum Society, reported that membership had almost doubled over the year. The year had seen the transformation from a club, the Ilkley Museum Club for young people into a Society for interested people of all ages.

## CORRESPONDENCE

### Little Wonder That Ilkley Wants More Independence

Sir.—We were very sorry to read that Bradford Metropolitan Council had approved the application for a change of use of the Lecture Hall, Rhyddings Road, Ilkley, to an Auction Gallery.

We were shocked when we discovered that the decision was taken by Bradford against the strong recommendation from the Ilkley Parish Council Planning Committee that the application be refused.

It would appear that no notice has been paid to the fact that a petition against the change of use was made, and no explanation has been given why the Bradford Council went against the firm opinion of our elected Parish Councillors.

There is little wonder that our Parish Council, and very many Ilkley residents, want much greater independence from the Bradford Metropolitan Council.

What do our three representatives on the Bradford Council propose to do about this apparently high handed, discourteous and ill considered action by City Hall?

W. D. FISHER  
(Chairman, Ilkley & District Ratepayers Action Group)  
Coniston,  
24 Ben Rhydding Road,  
Ilkley.

### Decontrol of District Finance

Sir.—The gloom in recent correspondence about effective Local Government for Ilkley Parish is not shared, still less its rancorous excesses.

It is not generally known that the last Government, appreciating that District Council finance generally was over centralised, authorised decentralisation, experiments in various parts of the country. Our District Council is monitoring those pilot schemes which interest it.

A particular, but not insuperable difficulty is that only ten per cent of the Bradford District electorate has the benefit of Parish Councils.

With the many political and Council meetings scheduled before Christmas, the present Government's policy in this regard should become apparent. It is then to be hoped that the Parish Council will be in a position to negotiate successfully with the District Council for limited financed powers without (repeat without) recourse to an extra local rate.

The favourable Ilkley District promotion at the recent superb Bradford Experience exhibition augurs well for the necessary goodwill to bring about this vital organisational change. The prospect light seems set at amber.

A. E. TURNER  
Ploverfield,  
Ben Rhydding.

## ACROSS THE YEARS 12 Oct 79

### Over 100 People Pursue Dog Suffering From Rabies

#### 100 Years Ago

A large brown dog suffering from rabies, pursued by over one hundred people, caused "great excitement" in Ilkley in 1879. The animal was first seen in Cowpasture Road where it attacked a sheepdog belonging to a Mr. T. Robinson of Tivoli Place, and ran off into Brook Street where it attacked more dogs. Mr. Kendall, of the Rose and Crown Inn, brought out a gun but could not get the dog within range. The dog fled again up Cowpasture Road towards Ben Rhydding and was finally killed by a lucky shot along Ben Rhydding Road.

At Otley Police Court the Clerk made an order that all dogs in the district should be muzzled and kept under control for two months and that the dogs which had been attacked should be destroyed.

The Ilkley contingent of the E troop of the Yorkshire Hussars visited Burley Butts and were initiated in the art of shooting by Sgt. Major Robinson. The men gave a creditable performance and in the evening regaled themselves with supper at the Wheat Sheaf.

#### 75 Years Ago

The Surveyor was instructed by the District Council to visit daily the site of the Brook Street improvement scheme to keep an eye on the work and its progress. The old

property behind the Star Inn and the Wharfedale Inn was fast disappearing and the new hotel to be erected there was designed with half-timbered gables and to be replete with every modern convenience. Half the ironwork was already in position in the construction of the new bridge over the river.

Mr. Edward Priestman delivered the address at the first social evening of the winter session of the Ilkley Temperance Society. Songs were rendered by Miss Brownhill, Miss Bland and Mr. G. H. Clarkson and the pianist was Miss Clara Brownhill.

A modern comfortable 12 roomed house was advertised to let in Ilkley at an annual rent of £42. A four bedroomed house in Ben Rhydding was advertised at £28 per annum, and Rose Cottage, Wilmot Road at £19 a year.

#### 50 Years Ago

Whilst the hunt for the murderer of Miss Mary Learoyd continued following an adjourned inquest attended by Col. Brook, the Chief Constable, an Ilkley domestic servant, reported being attacked in Cowpasture Road near the scene of the crime.

She was stopped by a man who jumped over the gate at the bottom of Sedbergh park and demanded money from her. When she threatened to call the police the man tried to seize her but she was able to free herself and ran back to the King's Hall Annexe where she found a police officer and told her story. The police did not connect the incident with the murder of Miss Learoyd.

A demonstration in the Electric showrooms of different types of electrical household appliances was well attended by the public and sales were good. An electric cooker suitable for a family of four at a hire charge of 3s. 6d. per quarter aroused a great deal of attention.

The big attraction at the New Cinema was Greta Garbo and John Gilbert in "Love" a story of romance and high passion.

#### 25 Years Ago

The Governors of the Ilkley Secondary School discussing the question of the status of the proposed new secondary school in the Ilkley area, were enthusiastic over the comprehensive type of education they had seen on a visit to Calder High Comprehensive School.

Mrs. F. S. Hampshire was re-elected for a second year to serve as Chairman of the board of governors, and Mr. Harold Fairbrother was elected vice-chairman.

Cinemascope apparatus was to be installed at the Essoldo Cinema, and the first picture to be shown to the public in this medium was "The Robe" starring Richard Burton and Jean Simmons.

The retirement was announced of Mr. H. W. Brumfit, of Denton Road, Middleton, from the position of Manager of the Leeds Office of the Scottish Widows' Society, which he had held for 25 years. He was an old boy of Ilkley Grammar School and a member of an old Otley family. He was a former school athletic champion in 1910 and 1911.

12 Oct. 1979

# PROVISION OF BOTTLE BANK AND WASTE PAPER COLLECTION POINTS TO BE INVESTIGATED

The possibility of introducing a "bottle bank" and waste paper collection points in Ilkley is being investigated by the Parish Council.

Cr. C. D. Poole said in the interests of economy it was about time Bradford Metropolitan Council introduced bottle banks and waste paper collection points similar to those in the Leeds district.

Leeds Metropolitan Council, said Cr. Poole, earned money from waste paper and the collection of glass bottles for recycling. Bradford could do the same at Ilkley and all that was required was the installation of a bin. There were thirty four points in the Leeds district where waste paper could be taken by the public. "I would like to see a scheme of this kind set up by Bradford," said Cr. Poole.

Clerk to the Parish Council, Mrs. P. M. Fisher, understood that Bradford Metropolitan Council was in the process of setting up three bottle banks, two in Bradford and one at Keighley. It was hoped to start them during the next two months for a trial period of six months, she said.

The Chief Cleansing Officer, Mr. Cooper, had informed her that the bottle banks were to be established in conjunction with the National Glass Federation and Redfearn Glass, of Barnsley. He said the first three banks were being sited in large areas of population where it was thought it was necessary for these to be commercially viable.

Commenting on waste paper collection the Chief Cleansing Officer said the Division had the equivalent of one and a half vehicles collecting waste, mainly cardboard, from commercial centres. However, if a collection point for domestic waste paper, such as newsprint, etc., was established in Ilkley perhaps some arrangement could be made with the Division, stated Mr. Cooper.

In a report to the Environmental Health Panel of Bradford Metropolitan Council Mr. Cooper said during initial investigations Redfearn Glass had agreed to hire out containers to the Council for a trial period of six months at a cost of £3 per week, these containers to be situated at three supermarket sites within the district. The cost of publicity and handouts for the bottle banks would be borne by Redfearn Glass. Local businessmen had been approached with a view to sponsoring or even buying the containers. Two firms had indicated their willingness to finance a container for the six month period, and another firm had offered to make a container for the Council.

The Parish Council agreed to look into the question of the collection of waste paper and to ask Redfearn Glass, of Barnsley, that a bottle bank be set up in Ilkley.

## ILKLEY TRAFFIC PROPOSALS BEING REVISED

Revised traffic proposals for Ilkley's town centre are at present under consideration by the West Yorkshire Metropolitan County Council.

This follows many objections by traders and residents to the original proposals and which caused Ilkley Parish Council to seek a meeting with officers in an effort to review the plan.

Mass yellow lining throughout the town is being resisted by traders and whilst Councillors seek certain amendments to the proposals they are pressing for immediate action to improve some of Ilkley's blackspots.

Director of Administration for the County Council, Mr. R. G. Brooke, has told the Parish Council that the advertisement of the County Council's proposals resulted in a large number of objections being received which were being considered by the officers.

"Preliminary discussions have taken place with the Chairman of the Bradford Area Sub-Committee who has asked the officers to prepare revised proposals taking into account detailed suggestions made by persons who have made representations and those of the Parish Council which was used as a basis for the recent discussions," says Mr. Brooke.

"In view of this reconsideration which is now taking place, it is felt that a meeting on the original proposals would be premature at this time," he said.

Chairman to the Council, Mrs. M. Renton, pointed out that County Cr. H. V. Haddrill, of Ilkley, supported the Parish Council's case for immediate action on some of the town's blackspots.

Some of the blackspots in the area mentioned by the Parish Council included parking at Ben Rhydding village; the junction of Springs Lane, Cowpasture Road, Chantry Drive and Station Road; the junction of Railway Road and Brook Street and outside the Health Centre.

## AREA OFFICE AT ILKLEY

The views of Ilkley Parish Council will be borne in mind when Chief Officers of Bradford Metropolitan Council review the future use of Ilkley Town Hall as a district office.

It was intimated in August that Bradford Metropolitan District offices might close if they were found not to function efficiently. They included Ilkley, Shipley, Bingley and Keighley.

At that time the Leader of the Council, Cr. B. Womersley said, "we have got to make the district offices properly function or we have got to merge them."

Chief Executive of the Metropolitan Council, Mr. G. C. Moore has told the Parish Council "no decision has yet been taken and, even if the Council decided to make changes with regard to the present area offices, my own view is that there will always be a District Council presence at Ilkley."

## BY-PASS PLANS DELAYED BY ELECTION

Plans for the long-awaited Addingham by-pass have been delayed by the General Election, a Ministry of Transport spokesman has announced. Five routes were suggested last year and the Secretary of State was expected to announce the preferred route this autumn.

However, the decision had been held up, largely due to the election, because final touches were still being put to the White Paper on general road policy, the spokesman said. If it had not been for the election the decision would have been announced on schedule, but now it had been delayed by a couple of months, he added.

Last year the five possible routes were unveiled for public comment, with villagers being asked to fill in questionnaires after a public exhibition at Addingham had given them the chance to study the proposals.

A public meeting was held and villagers gave the parish council the authority to negotiate on their behalf for a by-pass along the suggested "purple route".

The parish council was only prepared to consider the purple route, which it felt was the only true by-pass route suggested, and wanted certain amendments to take the road further away from residential developments at Moor Park and Street Farm.

The red, green and yellow routes were rejected as through roads which would divide the community, and the blue because it would cause a bottleneck where it joined the present A65.

After the official announcement of the preferred route, formal proposals will be made and advertised. Those affected will have the opportunity of objecting to or commenting on the proposals, and depending on the results a public inquiry may be held.

## CONCERN OVER SOCCER PITCHES

After it had been stated that it would cost in the order of £15,000 to carry out the necessary remedial work to Menston football pitch Ilkley Parish Council has asked for a priority list for pitches in the Bradford Metropolitan district.

Due to financial restrictions the Parish Council has been told that money was not available for the Menston pitch.

Cr. F. G. Lambert said money should be made available for the Menston pitch. "They have a lot of youths playing football and I think the pitch should be put right as soon as money is available," he said.

Cr. J. M. Shelton said he would like to know the whole position relating to football fields in the Bradford area. Burley was no doubt needing some attention; then there was Ilkley and they had been told there were problems at Addingham. Those fields were within a distance of several miles and they were probably talking about spending £20,000 to £25,000. He did not think they could take one field as an isolated case. The cost for remedial work throughout the Bradford Metropolitan District might be in the region of £150,000, said Cr. Shelton.

Cr. W. Forrest thought grants were available from the Sports Council and the Chairman to the Council, Cr. Mrs.

## Correspondence

### Waste Paper Collection Point Would Be Welcome

Sir, It was good to read Councillor Poole's views on waste re-cycling last week end. I hope that local residents will show their support for his proposals in a positive way.

For the past three and a half years' Friends of the Earth have been collecting waste paper regularly in Ilkley. Unfortunately our efforts have been limited by the size of vehicle available, voluntary manpower and a lack of storage facilities. However, it is quite apparent from the numerous enquiries we receive that a waste paper collection point in Ilkley would be welcomed and enable the increasing number of environmentally conscious to involve themselves in conservation.

There are of course other ways in which the individual can save paper. Refusing excess packaging could help to cut down on the 20 million or so paper bags and the superfluous eye catching wrappers which are used each day in this country merely to transport goods from shop to home.

The use of re-cycled paper goods should go hand in hand with saving waste paper for recycling. Local authorities as well as individuals should be persuaded to use recycled paper goods wherever possible. This in turn will help to reduce the cost of manufacture & make the recycling process even more attractive.

LIZ BOWEN  
Co-ordinator Wharfedale Friends of the Earth,  
14, Oakburn Road,  
Ilkley.

### Support for Bottle Bank at Ilkley

Sir,—All power to Cr. Poole and the Parish Council in their efforts to get a bottle bank in Ilkley.

For several years detailed research at the Open University has shown that it takes much less energy to return bottles than to throw them away. Now with the increase in energy costs, the Glass Manufacturer's Federation is sponsoring 200 Bottle Banks throughout the country.

The local branch of Friends of the Earth has had a correspondence with Bradford Metropolitan Council on this issue and will be keen to support the project. We hope that all those in Ilkley who deplore waste will support this local effort by writing to the Parish Council to strengthen their hand in dealing with Bradford Metropolitan Council.

M. FITZGERALD (Mrs.)  
6 Longcroft Road,  
Ben Rhydding.

### Buses at Ilkley

Sir,—We have recently received a letter from a West Yorkshire bus driver, pointing out the traffic tangle caused by the one car-parking space available behind the Skipton-Keighley bus stop and in front of the pedestrian crossing in Brook Street. The driver was particularly concerned about the difficulty caused to elderly passengers by having to mount the bus away from the kerb and thus having a higher climb to the bus step—often impossible for them when carrying shopping. In addition, if both the Keighley and Skipton buses arrive at the stop at the same time, the impossibility of pulling behind each other means double-parking, and a further hazard to alighting passengers.

The recent publicity re the lack of a taxi-rank in the station forecourt prompts my own comment that if taxis were there, then obviously the buses could not pass each other on their approach to the Leeds via Guseley and Bradford stop, nor on leaving the Otley and Harrogate stop. Visitors to Ilkley must obviously be misled by seeing taxi space designated, and no taxis available. It would be more honest and practical to have a straight forward "no parking" sign.

Picking up passengers by car could perhaps be concentrated at the waste land to the east of the station. On street parking on Railway Road could be reserved strictly for this purpose. Cars parked within 15 yards of road junctions are, as our bus-driver correspondent points out in breach of the highway code.

In view of the Ilkley traders pressure for street parking regardless of hazard, I think alternative points of view should be again aired.

OLGA HANSON  
Retiring Secretary,  
Ilkley Labour Party,  
16 Eaton Road,  
Ilkley.

### Local Government Control

Sir,—It is an unfortunate fact that coloured spectacles, particularly rose-tinted ones, although reducing strain on the wearer, do nothing to improve short-sightedness nor to restore reasonable authority to the grass-roots of local government i.e. in our case, the Parish Council.

The Local Government Act 1972 has always included provision for Parish and Town Councils to exercise certain duties but, as the original Urban District Council was unfortunately persuaded to relinquish all responsibility and assets, Bradford Metropolitan Council meets every request for their return with the same threats of double rating, or possible extinction. However, much authority is given by the present Government to administrative authorities to decentralise finance, the final decision will still be made by the same authorities. To be effective in our situation the right to claim some degree of decentralisation should be unequivocally given to local councils, thus presenting the ratepayers with the opportunity of deciding which facilities they wish to control directly. Mr. Turner has, in fact, highlighted the problem in his statement "Our (?) District Council is monitoring those pilot schemes which interest it."

To conclude, there are many local councils which, since reorganisation, have retained the right of direct control without double rating—and harmoniously. Ilkley, in area and population, is of battleship size in comparison to their M.T.B.'s and, unless we arm ourselves accordingly, we will, in like manner to the Fleet's big ships, vanish without trace. Believe me, it will be no pleasure to watch the Captain's hat bobbing up and down on the waves as the crew finally sings 'Ilkley Moor baht 'at'.

C. D. POOLE  
15, Princess Road,



## RESIDENTS COMPLA IN OVER PLAN FOR TOWN HOUSES AT BEN RHYDDING

A plan for the demolition of this bungalow and the erection of four town houses on land at the junction of Cardan Drive and Wheatley Lane, Ben Rhydding, has been the subject of a petition and complaints from nearby residents.

The plan, approved after a site visit by the Development Control Panel of Bradford Metropolitan Council, had created a good deal of public feeling said the Chairman of the Parish Council, Cr. Mrs. M. Renton who said the points raised by the Parish Council's Plans Committee had been totally disregarded by the Metropolitan Council.

Cr. Mrs. B. Cussons, present at the site meeting, felt the Metropolitan Council had already made up its mind and recalled that the restric-

tions on density for buildings per acre appeared to permit more under Bradford than formerly acceptable by the old urban council.

Cr. Mrs. Renton said when permission was given to the Parish Council to send representatives to the site meeting Bradford had pointed out that it had not to be regarded as a precedent. Surely, the local council knew better on this occasion, said Cr. Mrs. Renton who thought the Metropolitan Council was quite wrong in approving the plan.

Cr. C. D. Poole pointed out that Bradford Metropolitan Council had done what they were legally entitled to do and he did not think the Parish Council could complain without running the

risk of having the "book" thrown at it.

The plan for the four town houses showed they would have integral garages with access from Cardan Drive. In 1977 outline approval had been granted for one detached dwelling. Objections had been received then from the occupant of 19 Cardan Drive, the adjoining semi, on the grounds that the proposed dwellings were not in keeping and would reduce the value of surrounding properties. Residents of the terraced properties fronting Valley Drive had stated that, because of the relative elevations of the site, they would be overlooked and would suffer loss of light and views, and a drop in the market value of their houses.

For the Metropolitan Coun-

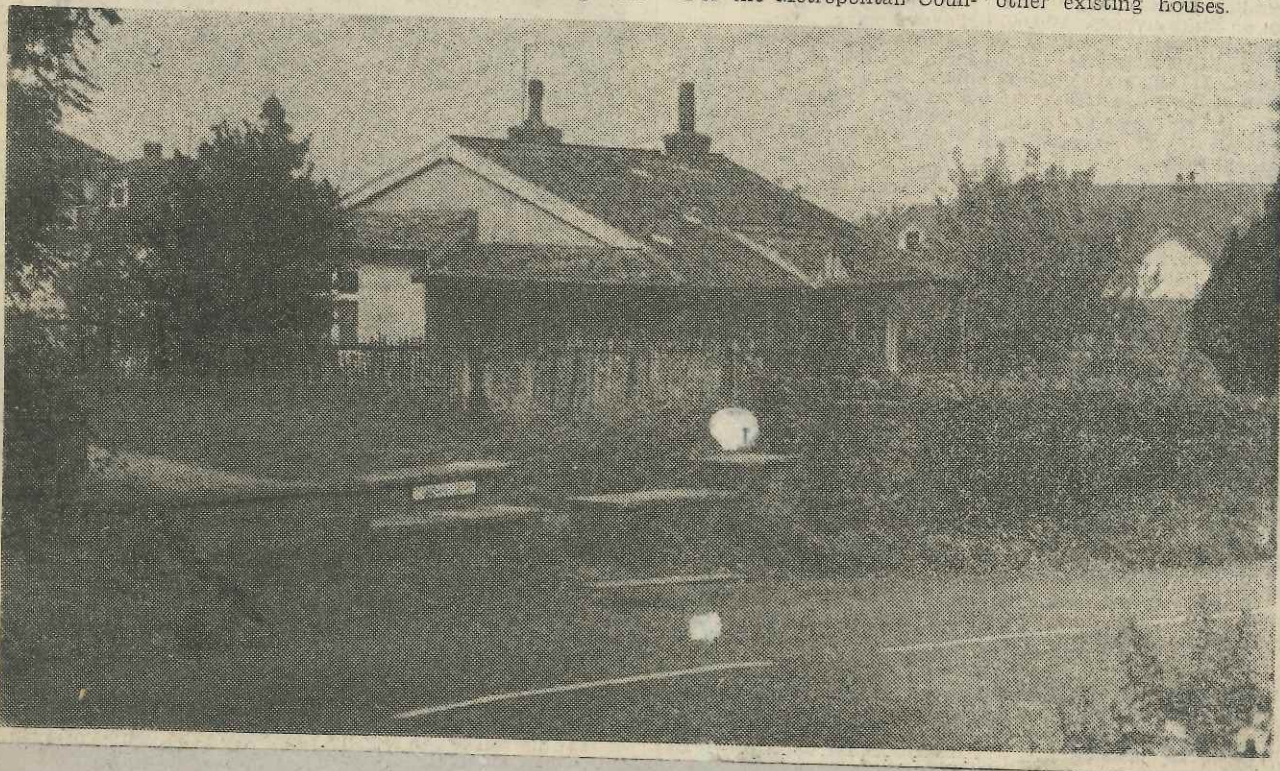
cil, Mr. Steel informed the Parish Council's Plans Committee that in the officers' view, the site was adequate and the proposed development satisfactory and it had been recommended for approval.

Members of the Parish Council's Plans Committee recommended that the plan be disapproved on the following grounds.—

1. The proposed development was out of keeping with the small modern semis in Cardan Drive.

2. The block would be at the wrong angle in Wheatley Lane, and washing lines etc. would be visible from the road.

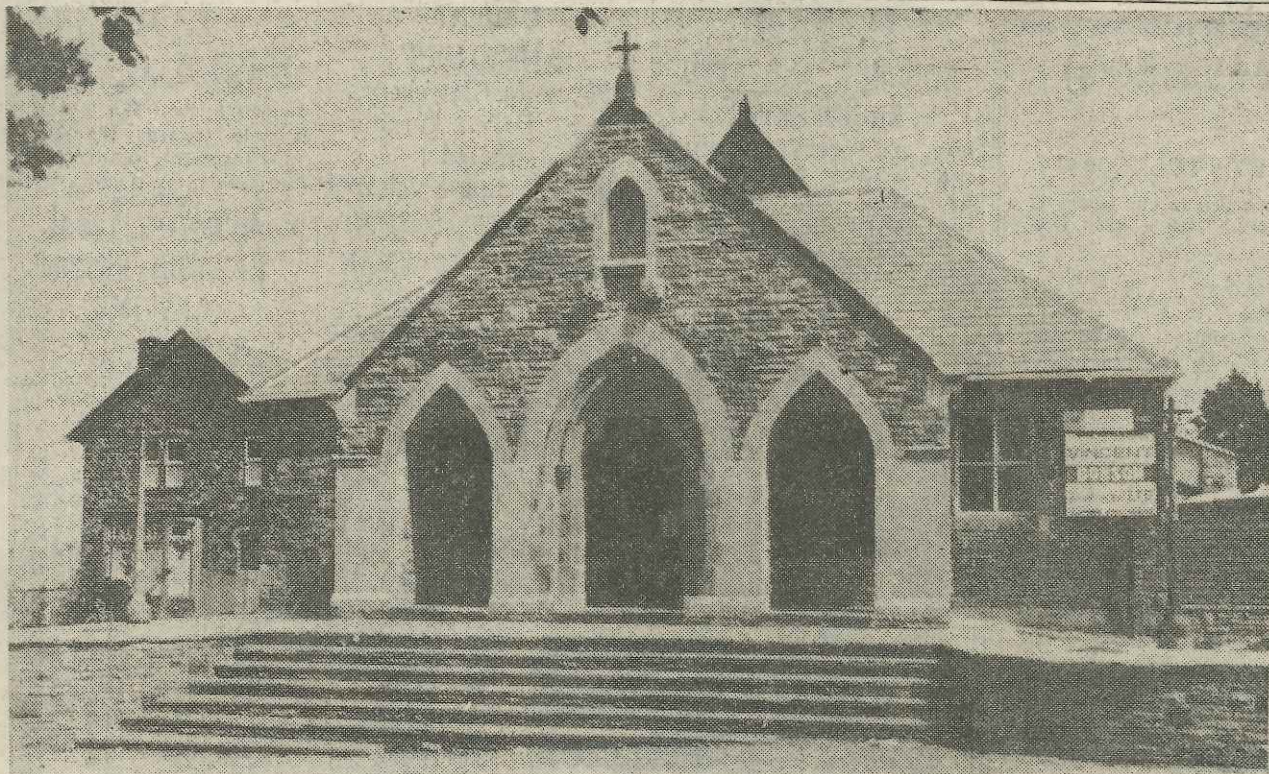
3. The town houses would have a poor relationship to other existing houses.



ma  
of  
con  
of  
D  
sur  
be  
edif  
pow  
one  
so  
T  
sibl  
tion  
and  
who  
of t  
neve  
scen  
the  
area  
D  
the  
Pat  
had  
this  
bere  
bene  
Mid  
Ilk  
of  
the

Th  
the  
to  
chur  
foun  
whil  
buil  
mad  
had  
infer  
black  
clear  
be s  
Th  
to  
desig  
for  
the  
and  
about  
the  
Ce  
the  
Fr.  
curat  
Mere  
You  
great  
Fr.  
Euge  
Geor  
Laha  
Mgr.  
Matt  
Daly  
Fr.  
Thon  
Patri

19-Oct. 1979.



The new frontage of the Church of the Sacred Heart in Stockeld Road, Ilkley.

## CENTENARY MASS AND DEDICATION OF SACRED HEART CHURCH

A service of commemoration and dedication to mark the centenary of the recently extended Church of the Sacred Heart, Stockeld Road, Ilkley, was conducted on Tuesday by the Roman Catholic Bishop of Leeds, Dr. William Gordon Wheeler.

Dr. Wheeler said he was sure the congregation would be proud of the new noble edifice of the church, incorporating the heart of the old one, which the architect had so cleverly contrived.

This had been made possible by the splendid benefactions of the late James Clarke and his sister, Sarah Foley, who lived the greater part of their lives in America but never forgot the Catholic scenes of their childhood in the Addingham and Ilkley area.

Dr. Wheeler congratulated the Parish Priest, Father Patrick Roche, and all who had helped him bring about this celebration. He remembered also with gratitude the benefactions which the Middleton family gave to Ilkley and the great tradition of the Passionist Orders in the area.

### Chalice

The service also included the restoration of a chalice to its former position in the church. The chalice was found in the church nouse while preparations for the building work were being made. At first Father Roche had thought it was of an inferior metal because of its blackened condition, but when cleaned later it was found to be solid silver, gold plated.

The chalice is now thought to have been specially designed and commissioned for the Middleton family in the late sixteenth century and given to the church in about 1707 when the last of the Middletons died.

Celebrants and clergy at the centenary mass included Fr. Paddy Waldron, former curate at Ilkley, Fr. Anthony Meredith, Fr. Theodore Young, Fr. Gerald Hargreaves, Fr. Paul Casartelli, Fr. Dermot Scannell, Fr. Eugene Kennan, Canon George Collins, Mgr. James Lahart, Fr. John Quirk, Mgr. John Dunne, Canon Matthew Keane, Fr. William Daly, Canon Robert Justice, Fr. Edward Hawkins, Fr. Thomas O'Connor, Mgr. Thomas Murphy and Canon Patrick Delany.

Langton, who first worked out the plans with the late Canon McGee. When Father Roche arrived, however, he revised the plans to give the church an entrance worthy of the new interior as well as making other alterations.

The side walls had to be taken out to enable the extension to be made, windows were designed by a Birmingham studio and others repositioned, and a new altar provided. The centre piece of the new portico outside the meeting room was the old front arch of St. Walburga's Church at Shipley, which was demolished two years ago. The stone was re-dressed and carvings carried out to enrich the mouldings.

The stone carved Papal coat of arms carrying the motto "Totus Tuus" (Wholly Yours) above the centre arch of the portico is the first of its type to be used on a Catholic church in England.

"The improvements of the surroundings of the Church and Presbytery is Father Roche's work, and the most has been made of the splendid position of the buildings, especially in relation to Stockeld Road and the river," said Mr. Langtry-Langton.

### Close Friend

Guests included Mr. and Mrs. Edward Connolly, of Albany, New York. Mr. Connolly was a close friend of James Clarke and Sarah Foley, and disbursed the monies of the bequest to Ilkley and Addingham. Also present were the Rt. Rev. Mgr. J. J. Kelly, Vicar General of the Leeds Diocese, Cr. Mrs. M. Renton, Chairman of Ilkley Parish Council, Mr. Frank Harms, Chairman of the Clarke-Foley Trust for the Elderly, and Sister Felicity of the Medical Missionaries of Mary, deputising for Father Roche's sister, Sister Mary Berchmans Roche, who was unable to attend as she was in the Mission in Malawi, Central Africa.

The extensions to the church were designed by architect Mr. P. H. Langtry-



Pictured at the centenary mass at the Church of the Sacred Heart, Ilkley, on Tuesday are (From left to right). — Mr. Joseph Fattorini and Mr. Alfred Meredith (Knights of the Holy Sepulchre), Father Patrick Roche (Ilkley Catholic Priest), Rt. Rev. William G. Wheeler (Bishop of Leeds), Father Anthony Meredith, and Masters Mark Dowling, John Bailey and Mark Martin (Altar Servers).

# DEPARTMENT GIVES MORE DETAILS FOR WANTING TO CLOSE SOCIAL SECURITY OFFICE

The Department of Health and Social Security has given further details for wanting to close down next month the enquiry office at Ilkley.

Ilkley Parish Council, however, is still concerned over the affects the closure could have and has asked the Ripon MP, Dr. Keith Hampson to look into the matter.

Last month the Department announced its intentions to close the Ilkley office, open one a day a week, because the number of callers had fallen to a level when it was not considered that continued opening was justified.

Providing more information about the Department's reasons for proposing to close the office, Mr. L. Harman for the Regional Controller at Leeds, says that during the past twelve months up to August a total of 939 people called at the Ilkley office, an average of about 18 callers per day. Of those, six used the premises as no more than a convenient alternative to the postal service by simply handing in documents etc. although in many cases franked labels would already have been supplied for return direct to the Keighley office. Of the twelve callers who actually sought information the Department's analysis suggested that most of the enquiries were of a fairly minor non-urgent nature, which could be handled at least as effectively by correspondence or telephone, without consequential hardship.

"I can well appreciate the concern of the Parish Council but can assure you it is not our intention to close any of our public caller offices while the demands made upon them justify their retention. However, there is a fine balance between administrative economy and the needs of public service and in the present circumstances I am convinced, in so far as it is possible to determine this balance, that our decision is the right one.

"I can assure you that our concern to meet the needs of our public is in no way diminished and I am confident that our decision will not reduce our capability to fulfil these obligations. Indeed I would hope that the more economic use of staff time in the Keighley area as a whole would to some extent improve that capacity," said Mr. Harman. It was still the Department's intention to provide a comprehensive home visiting service in the area for those who required it.

Vice-Chairman to the Council, Cr. K. G. Johnson said people without transport wanting to visit one of the Department's offices would have problems because Keighley was not easy to reach by public transport.

Cr. C. D. Poole said it was all very well for the Department to talk about dealing with matters through correspondence but some of the answers could be incomprehensible. It had been stated about twelve months ago that the cost of a letter in reply to enquiries could be £4 so he wondered how much this was going to cost besides inconveniencing the public.

Cr. Mrs. B. J. Cussons said "I think it is disgraceful to take this public service out of Ilkley.

Ilkley Parish Council is also to ask if residents could use the facilities, if offered, at Otley instead of having to travel to the Keighley office.

Cr. Johnson spoke of the difficulties which could arise for people seeking interviews with the Department and his proposal that the help of the local MP be sought was approved by the Council

## CONCERN OVER ILKLEY — BURLEY DOGS

Dogs at both Ilkley and Burley have been the subject of comment in recent weeks.

At Ilkley questions have been asked by Parish Councillor C. D. Poole about the legality of notices about dogs which have appeared in the riverside gardens. These ask owners to restrict their dogs from fouling the gardens and others state that "dogs must be on a lead."

Chairman to the Council, Cr. Mrs. M. Renton, replying to Cr. Poole at this month's meeting of the Council, said there were by-laws prohibiting dogs not on a lead in certain parts of the town and the riverside gardens may be in one of those areas.

Bradford Metropolitan Council is to be asked about the notices.

At Burley, Mrs. Margaret Campbell, on behalf of the Burley Community Council, says at the last open meeting members of the public expressed concern over "dogs and pavements."

In a letter to the Council Mrs. Campbell says "our village pavements, and especially the area around Grange Park, seem to be the worst affected." She was sure the Council was aware of the health hazard this caused, and the parents of children who used the playing area of the park were particularly concerned.

"In order to bring to the attention of dog owners the particular by-law (and penalties) covering this nuisance, would the Council be prepared to have an appropriate notice printed and displayed in the village such as in the shops, library etc. as was recently done in Otley," asked Mrs. Campbell.

Cr. J. M. Shelton said whilst there were by-laws on this subject it seemed no-one was prepared to report anyone to the Police and have legal action taken.

Cr. Mrs. I. Carney said they had a similar problem in Menston where they also had horse manure.

"But people go out and collect that," said the Chairman, Cr. Mrs. Renton.

"This is left on the pavements," complained Cr. Mrs. Carney.

The Parish Council agreed to ask Bradford Metropolitan Council if notices about by-laws and dogs were available for display in Burley and Menston.

## PLANS FOR PLAY AREA AT ILKLEY RIVERSIDE APPROVED

Plans for the proposed new childrens' play area at the Riverside Gardens, Ilkley, in connection with the Childsplay '79 project have been approved by Bradford Metropolitan Council's Planning Division.

26 Oct 79  
Correspondence

### Social Security Office

Sir.—The report carried on the DHSS proposals to close the enquiry office open, at present, weekly at Ilkley raised the difficulties of reaching Keighley by public transport. The parish council had raised the possibility of claimants being permitted to use DHSS facilities at Otley. I fear that for pensioners the prospect of a bus journey, in either direction, might be equally daunting.

At present, the unemployed have to register at the Department of Employment, at Otley many of these in addition are forced to claim social security, this has to be done at the DHSS at Keighley. It would be a considerable time-saver if in future these claims could be made at Otley; this would also effect some small saving in public expenditure, as claimants are entitled to reimbursement for such 'essential' journeys from the appropriate department.

R. M. JONES (Mrs.)  
13 Trafalgar Road,  
Ilkley.

### TOWN CENTRE PLAN

Following further enquiries by Ilkley Parish Council about the progress of the Ilkley Town Centre Plan following the announcement of the abandonment of the Ilkley By-Pass, the Chief Planning Officer to Bradford Metropolitan Council says the County Council has asked for time to confirm the intentions of the Secretary of State and to consider the implications.

It did not seem, therefore, that they would be able to keep to the programme as originally envisaged, as stated.

26 Oct 79

### RATES COULD INCREASE BY 36 PER CENT

A warning that rates in the Bradford Metropolitan district could rise by at least 36 per cent was given at Tuesday's City Council meeting.

It came from Cr. Brian Womersley, leader of the Council, when a motion by Labour members attacking the indiscriminate nature of the cuts being imposed by the controlling Conservative group was debated and defeated.

Emphasising the extent of the problem, Cr. Womersley said that even with drastic cuts in spending next year the Council could face a rate rise of about 36 per cent. If the rate support grant settlement distribution was altered and sufficient cuts were not made the rate rise could be in the region of 72 per cent. Wage increases were expected to cost an extra £26m next year, and £37m in the following year.

He suggested it was a problem which would not just go away. He denied any diminution in services.

19 Oct 79

## Two Jump From Carriage As Startled Horse Bolts

100 Years Ago

Mrs. J. Cole, of The Grove, Ilkley, and her niece had to jump out of a carriage near The Holmes when the horse was startled by the movement of a man behind a hedge and took fright and bolted at speed along the road. The ladies were fortunately unharmed, and the horse continued to run up into the town. Only the door of the carriage was damaged. The horse was finally stopped by Mr. Brogden, butcher, in front of Mr. Grunwell's, Brook Street. Children attending the Greenholme Day school, Burley, had their annual treat. They went to Wharfedale, the home of the Rt. Hon. W. E. Forster M.P., who took a deep interest in the welfare of the village. Two hundred children were given tea and then played sports or games in the grounds. Prizes were given for good work and conduct and the proceedings closed with a programme of songs rendered by the children.

75 Years Ago

The weather in October, 1904 was described for the main part as being "delightfully pleasant" with one of the finest autumns for many years.

An autumn fancy dress ball at Craiglunds was held with a full house of visitors. About a hundred people donned fancy dress, described as "gay and fascinating." The band were on stage amidst a bower of rich autumn foliage, and the scene was altogether one of great beauty.

Householders in Ilkley were warned that burglars were busy in the surrounding district, particularly at times when occupiers were at church or chapel. Police advised householders to leave a light burning and take every possible precaution against intruders.

During the Summerscales Musical competitions at Keighley, local singers in the Ilkley Orpheus Glee Union had a narrow escape when a roller holding scenery broke away, and struck six or seven vocalists. Seats on which the Glee Union had been sitting a few minutes earlier were smashed to pieces, but other competitors on stage suffered injuries of a serious nature.

50 Years Ago

In the course of extensive work carried out on the moors, the famous spring which supplied the White Wells was traced to its source and workmen digging five feet below the surface of the ground discovered the bath or well upon which Ilkley's fame as a spa was first founded.

On a flat portion of land in a direct line south from the clump of trees above White Wells they found a rectangular bath of well-faced stonework. The article told the story of an old legend on Ilkley Moors, of a man who bathed sores on his leg in the waters and found it so beneficial that the fame of Ilkley as a health resort spread far and wide.

A former curator of White Wells in 1900 used to tell visitors that the well had been discovered 600 years previously in White Wells and that the walls around were built in 1650 and it was roofed in in 1850. The truth of this assertion however was in some doubt, and also the question of whether or not the Romans were aware of the presence of the spring as it was part of the water which flowed down Brook Street which they utilised for the defence of their fort. Mr. McCall, a well known Yorkshire Archaeologist expressed the opinion that it was not Roman in origin but medieval, and was constructed to amplify the supply to the other baths. The culvert he thought had been put in when the whole of the building had been pulled down and some of the stonework of White Wells was obtained from this original much older building.

25 Years Ago

The suggestion that Ilkley Rotary Club to commemorate the golden anniversary of the Rotary movement should provide a public shelter on the site of the Brook Street Fountain met with opposition at a meeting of Ilkley Council.

Doubts were mostly due to the fact that this would involve the removal of the fountain according to the information supplied by the Clerk, Mr. B. E. Townend. Cr. E. Wolfe suggested that the matter be referred back and this was seconded by Cr. J. H. Cole.

The weather in October, 1954 was the wettest since 1941 with a total rainfall of five and three-quarter inches.

More than 300 players attended the ninth annual St. Dunstan's Bridge Congress at Craiglunds Hotel, with twenty six teams entering.

First Ben Rhydding Scout Group held an "At Home" when their new Headquarters in Cardan Drive were opened by County Commissioner John Foster Beaver and W. Becket Henderson.

## ILKLEY POLICEMAN DIES AFTER BEING OVERCOME BY FUMES IN POTHOLE

Potholing experts on Tuesday recovered the bodies of Ilkley Police Constable Richard Marvel, of Mayfield Avenue, and Guiseley TV design engineer John Staniforth, from Cote Gill pothole, near Hawskwick, North Yorkshire.

The two men had apparently been overcome by fumes after blasting in the pothole. They were trying to extend the 276ft long, 42ft deep pot with explosives and had not allowed long enough for the dangerous fumes to clear before re-entering. It was thought.

The bodies were found by members of the Upper Wharfedale Fell Rescue Association on Monday, about 50ft inside the cave, but attempts to recover them had to be abandoned because the shaft was still filled with fumes. Members of the rescue team who had been underground were taken to hospital for blood tests as a precautionary measure.

On Tuesday more sophisticated test equipment was taken to the scene and the fumes were flushed out by releasing bottles of compressed air inside the cave, until the bodies could safely be recovered.



PC Marvel (25) was married with two young children. He joined the police force at the age of nineteen and had been potholing for twelve years. Both men were experienced potholers and were members of the Bradford based White Rose Potholing Club. Mr. Marvel held an explosives licence and had often been into Cote Gill.

Mr. Staniforth (31), who lived with his parents in Westbourne Drive, Guiseley, had been potholing for four years and was a probationary member of the Upper Wharfedale Fell Rescue Association. Both he and PC Marvel were anxious to make potholing safer for

younger enthusiasts. Mr. Peter Miller, of Oakburn Road, Ilkley, a member of the Association, said Cote Gill was a fairly small cave as it existed but there was obviously a great deal of potential for there being quite a large system. The end of the existing cave was choked with large boulders, and Mr. Marvel and Mr. Staniforth had been trying to blast these into manageable pieces which could then be removed.

He said the two had not been affected by the blast as they had been outside the cave when the charges were fired. They had apparently gone walking for a couple of hours before attempting to re-enter the cave, and had then been overcome by the fumes. Mr. Miller said he could not say what gasses had caused their death, but the rescue had been hampered by heavy concentrations of carbon monoxide and carbon dioxide.

A doctor had been down the cave equipped with breathing apparatus on Monday and had certified the two to be dead.

The rescue controller was the Fell Rescue Association's Chairman, Mr. Chris Baker, of Main Street, Addingham, and the underground operation was led by Mr. Harry Long, of Silsden.

### INQUEST OPENED

When an inquest on the two dead men opened on Wednesday Mr. Miles Coverdale, the Claro coroner, warned potholers to stay away from the cave.

The two men died after using explosives to try and discover a spectacular new system. They were overcome by fumes. No one yet knows if the explosion uncovered a new cave system and Mr. Coverdale said "under no circumstances must any enthusiasts try to find out what has happened."

He praised members of the Upper Wharfedale Fell Rescue Association for their efforts to recover the bodies. "I would like to place on record my thanks to all the people concerned for their attempts to get the bodies out. I know a great deal of effort has been taken and not a little risk taken," he said.

The inquest heard that post mortem examinations had been held and Dr. Roger Dale Pyrah, the pathologist, thought both men died of carbon monoxide poisoning. The inquest was adjourned to a date to be fixed.

## Parents Fined After Children Regularly Missed School

### 100 Years Ago

A number of residents from Ilkley and Wheatley were summoned at Otley Petty Sessions for causing their children to miss regularly attending school. The defendants received severe reprimands and were given fines with costs as a penalty and a severe warning if they offended further.

A series of lectures illustrated by "dissolving views" was started at the Grove School-room in connection with the Congregational Sunday School Band of Hope. The Rev. S. D. Hill was the lecturer, and his subject was "China, and the Chinese". The views shown were exceptionally fine, and the young audience was highly appreciative of the evening's entertainment.

### 75 Years Ago

Ilkley's claim to fame as a health resort was substantiated by the fact that at a meeting of Ilkley Council it was stated that during the previous months the death rate was the lowest recorded in modern times, and four per thousand below what it was 25 years previously. It was, however, said that residing in Ilkley had its disadvantages with trade at a very low ebb, and money anything but plentiful.

The District Council had under urgent consideration the question of finding work for the unemployed in the town, and decided to open a parish labour register with a view to trying to find work for these people. A suggestion had been made to limit the Council workmen's hours of work so they could employ more men as this was taking place in other towns. In the Ash Grove district alone twelve or thirteen men were at that time without work.

### 50 Years Ago

The number of unemployed registered at the Ilkley office of Employment on 21 October, 1929 was 151. These mainly consisted of men in the building and associated trades and women associated with the textile industry.

As a permanent tribute to the work of Dr. W. R. Bates it was proposed to place a memorial tablet in Addingham Church and also to endow

a bed in the Coronation Hospital, Dr. Bates being one of the original promoters of the Hospital and "a man who understood Yorkshire folk and was appreciated by them."

Ilkley Cricket Club held their annual dinner in jubilant mood when not only had they won the Airedale and Wharfedale Cup but had also reached fourth place in the Yorkshire Council table. Mr. C. Davidson, president, presided.

### 25 Years Ago

Criticism of the current method of appointing Hospital Management Committees was expressed at the monthly meeting of Ilkley Urban District Council, when it was suggested that it would be to the advantage of the public if members of Committees were better known and if more publicity were given to their activities.

The question of providing a dance floor in the King's Hall and replacing the existing chairs was put forward for consideration by the Entertainment Halls Committee. It was suggested an estimate of the cost involved should be obtained. Costs had been given for a portable floor, both cabaret type and the entire surface. The Treasurer suggested that it might be easier to lay a permanent floor and cover this when necessary to preserve the surface.

Mr. G. M. Robertshaw presided and proposed the toast to "The School" at the annual dinner of the Old Olicanians' Association. Mr. E. Sparham who was due to retire from the school as Senior Science Master replied to the toast and paid tribute to five of his old colleagues: Mr. A. Bartle, Mr. Evans, Mr. H. Eames, Mr. C. P. Lovelock, Mr. J. F. Ebdon.

## CHIEF EXECUTIVE GIVES ADVICE ON PARISH COUNCIL'S PROCEDURE

Council procedure came under scrutiny at the October meeting of Addingham Parish Council, when Bradford Metropolitan Council's Chief Executive, Mr. Gordon Moore, attended to help councillors clarify certain points.

The Chairman, Cr. A. H. Jerome, explained that Cr. J. Wells had raised the matter of procedure with regard to the method of conducting meetings, and he had asked Mr. Moore to attend in his capacity of Chief Executive to the District Council.

Cr. Wells said the point was raised in letters from three residents as to whether the parish council was complying with the requirements of the Local Government Act in the way it called planning meetings without placing an agenda in a public place so that members of the public could attend.

When "in committee" the resolution to exclude press and public did not clearly state why the council had gone into private, and there was also the problem that councillors did not receive proper notification of planning meetings as there was no laid down agenda.

Mr. Moore pointed out that he was not a legal advisor, describing himself as a "lapsed lawyer". He added that in general the principle of local government was to let the public know everything, except items for which there was a very good reason not to.

### More Informal

He said there was no difference at law between Addingham Parish Council and Bradford Metropolitan Council, they were both bound by the same rules, although the parish council had perhaps become a little more informal.

He had seen on visits to the parish council the "understandable and interesting ritual" of going round the table under "any other business", which he thought was a splendid way of conducting business in a parish council environment. Mr. Moore advised that an item be placed on the agenda to include this, such as "to receive the monthly comments of parish councillors."

However, Mr. Moore had one word of caution in that nothing of monumental importance should be raised during this session, but should be placed on the agenda.

The question of planning meetings being open to the public was more difficult, however, as it was a particularly sensitive area. The parish council had a right to be consulted but it should be fairly meticulous about how it exercised that right.

### Legal Process

If members were going into committee to discuss planning applications they should go through the proper legal process, which required them to pass a resolution every time and to specify every time why they were going into private discussion. This meant matters which could be detrimental to the government of Addingham if made public.

Also, a planning officer from Bradford attended planning meetings at Addingham, and he might be more inhibited in his comments if the meetings were public, added Mr. Moore.

Cr. Wells felt the public should be encouraged to attend planning meetings. Councillors should not act differently at planning meetings if the public was present.

Cr. Jerome pointed out that the District Council discussed and made decisions on planning applications in private, and if this was good enough for them it was good enough for the parish council. If the public and press were present Bradford's planning officer might not be able to advise councillors to the same extent and might not even attend any more. This could quite easily be detrimental to the public, he said.

It was agreed that in future informal, private meetings of parish councillors and the planning officer should be held to discuss planning matters relevant to Addingham. Those present would then report back to the full parish council what comments had been made and the decisions made by Bradford.

## PREPARING BRIDLE WAY REPORT

Countryside Liaison Officer to Bradford Metropolitan Council, Mr. L. Morgan, is preparing a report on the proposed bridle way across Ilkley Moor for consideration by the Chairman of the Council's Leisure Services Panel and Chief Recreation Officer.

It is now almost twelve months ago since the Council put forward its first official route for a bridle way which began near the Cow and Calf Rocks and followed a line across Backstone Beck close to Ilkley Tarn and the paddling pool passing close to Ilkley College before moving along to the Swastika Stone and to the bottom of Hebers Ghyll Wood.

Since then there has been much discussion by Ilkley Parish Council over the proposal and after a public meeting in July a recommendation by the Council for the Preservation of Rural England was accepted by the Parish Council and put to Bradford Metropolitan Council for its consideration.

This was for a route which would take riders across the top of the moor instead of along the lower reaches, a route which had been much criticised.

## Examining future relationship

A sub-committee to examine the future relationships of Ilkley Parish Council with Bradford Metropolitan Council has been re-appointed by the Parish Council.

Members serving on the committee are: Cr. Mrs. M. Renton (Chairman) Crs. K. G. Johnson (Vice-Chairman); S. Crossley-Smith (Chairman of Plans Committee); C. D. Poole (Chairman of General Purposes Committee); E. S. Gardner, W. R. Hill, F. G. Lambert and C. H. Scaife.

## NO MORE ROOM ON BOARD RECORDING COUNCIL CHAIRMEN SINCE 1895

A new board on which the names of Chairmen of Ilkley Parish Church Council will be inscribed and displayed in the Council Chamber of Ilkley Town Hall is to be provided by Bradford Metropolitan Council.

Chairman to Ilkley Parish Council, Mrs. M. Renton (right) and Bradford Metropolitan Council Area Administrative Officer at Ilkley Town Hall, Mrs. M. Sugden, are pictured looking at the present board which records the names of chairmen since

1895. The name of Cr. Mrs. Renton filled the last remaining space and necessitated the provision of a new board.

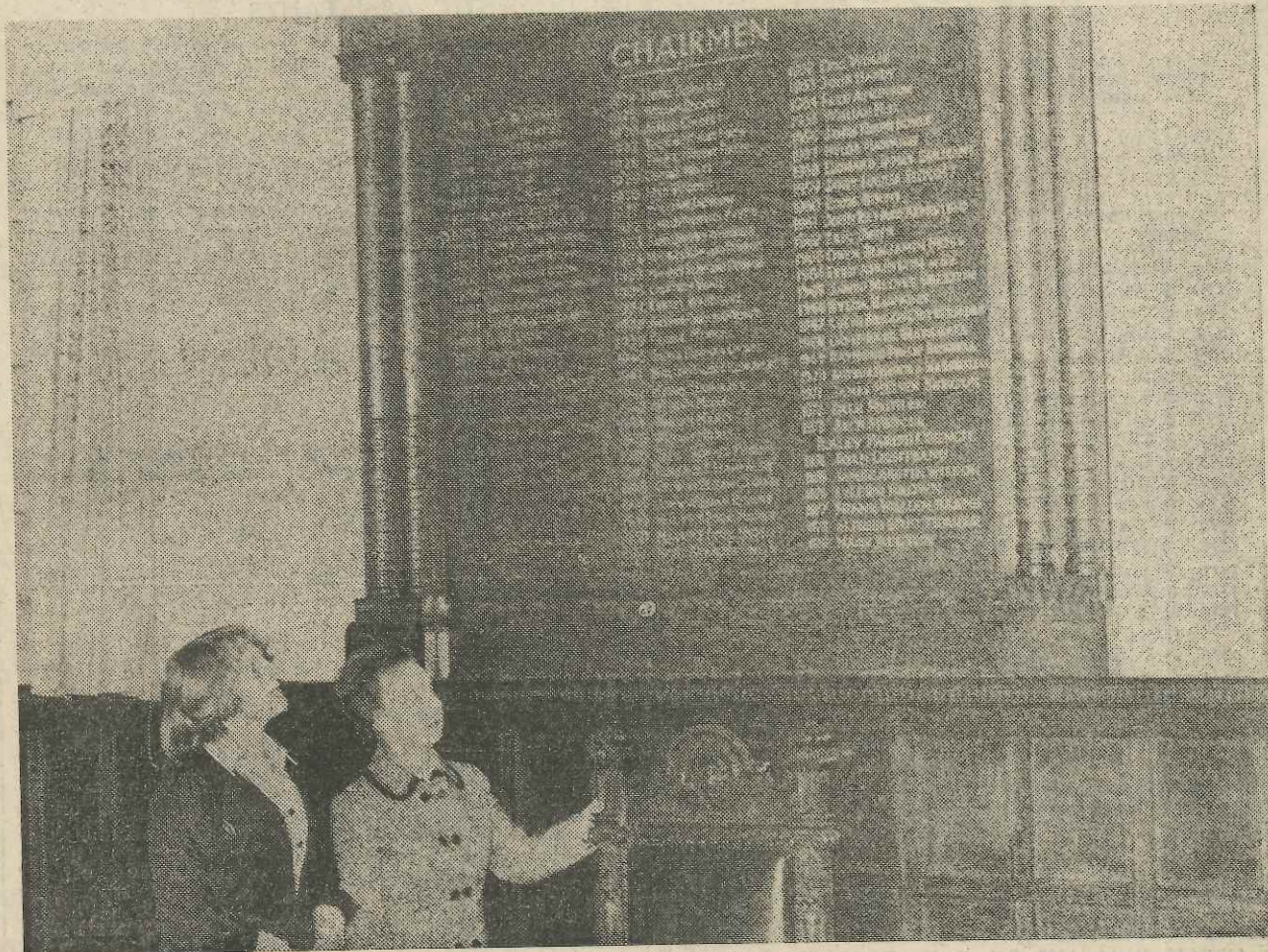
The first name to appear on the board is that of John Beenlands in 1895 after the Urban District of Ilkley was formed in December, 1894, under the provisions of the Local Government Act of 1894.

The history of local government in the Ilkley district goes back to 1864 but it was not until twelve months later that the Ilkley Board was

properly constituted as an authority to administer Ilkley. The first election was held at the end of 1869 and 77 people were nominated for the 18 places. The first meeting of the Local Board took place in the Station Hotel which stood on the site of Barclays Bank in Brook Street. Mr. John Hartley was appointed Chairman and Mr. William Margerison became Clark at a salary of £20 a year.

Ilkley Urban District Council came into being in 1895 with Mr. John Bean-

lands as its first Chairman. The urban district was extended in March, 1926 by the addition of the Parish of Middleton and again in 1937 by the addition of Burley and parts of the parishes of Menston, Guiseley, Askwith, Denton and Hawksworth. By 1974 there were again further changes in local government when the Ilkley district became part of the Bradford Metropolitan District which left Ilkley with a Parish Council of 21 members, making it the largest Parish Council in the country.



# FIRST TRADES FAIR IN SIX YEARS INTRODUCES VISITORS TO SHOPPING IN THE 1980's

26 Oct 79

Their main aim was to introduce shoppers to the 1980's in a compact and attractive display which made the best use of both halls. They were supported by some of the major voluntary organisations and societies in the town to illustrate their activities in the King's Hall boxes. They included, the Rotary Club, Good Neighbours Scheme, Amateur Operatic Society, Civic Society, Rotaract Club, Pre-School Playgroups, Wharfedale Lions and Leos, Round Table and Soroptimists International.

The fair, revived after six years, was opened by the Lord Mayor of Bradford, Cr. John Senior accompanied by the Lady Mayoress, Mrs. Senior and the Chairman to Ilkley Parish Council, Cr. Mrs. M. Renton and Mr. Renton.

Together with a representative of Kodak they acted as judges and made the award to the stand judged to be the best for its presentation to G.H. and E.M. Hardisty, grocers of Skipton Road. Second were Powells of Ilkley, fine English and continental cheese specialists of The Grove Promenade, followed by R.W. Morten (Ilkley) Ltd., specialists for ironmongery, hardware, garden and bath-room equipment, of Cunliffe Road. In fourth place came Vincent Dobson (Contracts) Ltd., general contractors for all new works, property repairs, extensions, alterations, including plumbing, joinery, decorating, drainage in the Ilkley area.

The judges admitted they had had a very difficult task in reaching their decision because of the high standards and the attractive stands throughout the exhibition.

Cr. Senior who always found it a pleasure to visit Ilkley was impressed with the Trades Fair and with the new shops in the town.

## Delighted

Chairman of the Parish Council Cr. Mrs. Renton, said she was absolutely delighted to see the fair resurrected and whilst it was on a smaller scale compared with previous fairs it was wonderful to see its return.

The small shopkeepers had the opportunity of showing what could be obtained in Ilkley and from the very high standards achieved at the fair Cr. Mrs. Renton felt there was very little need for people to have to shop outside the town. There was the variety and goods in the town, she said.

During the first two hours of the fair officials were pleased at the public response as visitors filled the halls and ensured an early success to the event.

The original idea of putting under one roof a comprehensive display of merchandise available in Ilkley impressed visitors and gave encouragement to officials already thinking of trade fairs in the future.

President of the Ilkley and District Chamber of Trade and Commerce — organisers of the event — Mr. G. A. Peel, paid tribute to the exhibitors who during the past two days had completely transformed the two halls.

Such was the enthusiasm of exhibitors that one trader displayed three cars on the stage in the King's Hall.

Welcoming visitors Mr. Peel said "this fair is for everyone, the young and young in heart, for the family, for the visitor and for the residents both old and new. It provides a unique opportunity to bring together a comprehensive selection of local traders to show a sample of the variety of goods and services available in Ilkley."

"Ilkley, pleasant, mid-Wharfedale town which grew on its reputation of its medicinal waters and its bracing moorland air, has more to offer than its legend in song.

"At the gateway to the Yorkshire Dales, Ilkley and the moors which flank it have been settled for 4,000 years. The town called Olicana by the Romans became fashionable in the early part of the last century, following the construction of hydropathic establishments, hotels, boarding houses and convalescent homes which quickly transformed a little village into a modern and attractive inland watering resort, with broad tree lined avenues, high class shops, landscaped gardens, river boating and a variety of sporting facilities.

## Changing Times

"In more recent times, changes in the structure of our society have gradually eroded the fashion for 'taking the waters' with the result that Ilkley's popularity as a Spa declined whilst its reputation as a holiday and health resort became more widely known. And the song? It's a warning in dialect to the young not to go courting hatless, or as they have it in Yorkshire ban't at.

"Today, truly Ilkley remains a natural playground whilst at the same time providing, through its trade and commerce, a good business mix which compares favourably with neighbouring towns and cities but surely in a more natural and friendly manner.

"The ability to be able to park cars freely without undue interference is still a major attraction and long may it continue to be so. In fact the facilities compliment the raw and undisturbed beauty of Ilkley and its moorlands, which are still largely unspoiled: a last frontier of society at the gut of Britain. Indications are that a new 'fashion' in suburban shopping is re-emerging with the increasing travel and parking costs being detrimental to city shopping. This may be seen as almost completing the turn of the wheel and allows Ilkley to be self promoting as a business and shopping centre."

Mr. Peel went on to thank the Trades Fair Committee for their hard work and the exhibitors for their confidence in Ilkley. "May we go forward into the eighties working in harmony with the visitor and local community alike for the benefit of Olicana," said Mr. Peel.

Exhibitors included: The Country Shop, Ilkley; Darbysons of Burley; Profile Health and Beauty Salon Ltd., Ben Rhydding; Allen and Walker, Ilkley; Skipton Building Society, Ilkley; John Lister Florist (Bradford) Ltd., Ilkley; R.W. Morten (Ilkley) Ltd., Ilkley; Dalesbike, Addingham; Colin Hawkes, Ilkley; G.A. and J. Peel CNT Shop, Ilkley; JCT 600 Ltd., Ilkley; G.H. and E.M. Hardisty, Ilkley; Vincent Dobson (Contracts) and (Builders) Ltd., Ilkley; Hall and Pickering, Burley; Broadbents (Booksellers) Ltd., Ilkley; A. David Paling, Ilkley; H. Tenant and Co., Hawksworth Street, Ilkley; Cleggs, Ilkley; Dacre Son and Hartley, Ilkley; Lamps and Lanterns, Ilkley; Maurice Booth, Ilkley; Wharfedale Cycle Depot, Ilkley; Lister Horsfall (Ilkley) Ltd., Ilkley; Lucy Gray's Fashions, Ilkley; Richard Beck with Photographers, Ilkley; Wharfedale Graphics, Ilkley; Gordon G. Cook and Co., Ilkley; Zipper Wharfedale Leisure, Ilkley; Tenant and Son, The Grove, Ilkley; Powells of Ilkley; Little Rock Eating House, Ilkley; Rockville Ice Cream Parlour, Ilkley; John E. Platias, Ilkley; Bluebird Travel, Ilkley; Mayfield Window Cleaning Service, Ilkley. The fully licensed bar and the appetiser snack stall were provided by the Ilkley Moor Vaults.

Visitors to Trades Fair '79 which opened at Ilkley on Wednesday night and ends tonight (Friday) will have had the opportunity of peeping into the 1980's and of seeing what they can expect to find in the shops.

Thirty four local traders gathered under one roof in the King's Hall and Winter Gardens to stage an exhibition showing a sample of the variety of goods and services available in the town.

## ACROSS THE YEARS "Favourable" Death Rate At Burley

2 Nov 79

### 100 Years Ago

In the Medical Officer of Health's report to Burley Local Board, there were numerous births with twenty seven being registered. He considered the death rate to be very favourable of 16 to 1000 inhabitants. Four out of the ten were infants under one year, and three out of ten were elderly people of over 70 years of age. He said there had been very little sickness during the year, and only mild cases of scarlatina to contend with. He expressed great concern about lack of ventilation in the sewer in the Main Street, and asked for this to be remedied.

The fifth of November was celebrated with the usual festivities with most schools having their own bonfires, which illuminated the hillside. A large number of crackers, rockets and other types of fireworks were let off during the course of the evening.

### 75 Years Ago

Steady drizzle curtailed the enjoyment of local children observing the traditions of the Fifth November. Bonfires, however, managed to blaze around the town, and there was a continuous fusillade of guns, cannons and fireworks. Happily no accidents were reported.

A good deal of space was given to a report of a pre-marital stage night of Mr. Wm. Milton, manager of the Ilkley Branch of the Bradford Old Bank. The report went into great details of the proceedings at the Middleton Hotel with Rev. Irton Smith in the chair, and reported all the speeches, toasts and songs rendered on this occasion.

Mr. Hadley from Thwaites was appointed stationmaster at Addingham to succeed Mr. C. Lewis, who after three years, was transferred to Methley, Nr. Leeds.

### 50 Years Ago

Criticism was received from officials of Ilkley Golf Club regarding a road improvement scheme which was being carried out by the Wharfedale Rural District Council in widening the road which runs from

Ilkley Old Bridge to Bolton Bridge. It was pointed out that these alterations would "interfere with the amenities of the club."

Ilkley people showed their appreciation of the efforts of the local Police, Fire Brigade and Crusaders to provide a new home for Mr. John Denny and family in place of the home destroyed by fire a few weeks earlier in Brook Street. There was a very large attendance at a whist drive and dance to raise funds, and together with donations the fund amounted to £51.

The Ilkley Players, newly formed Theplans company, were busy with a production of A. A. Milnes's play "Mr. Pim Passes By." Leading parts were to be taken by Mrs. Charlton, of Ilkley, and Mr. J. R. Phillips of Ben Rhydding. The proceeds were to be given to the Coronation Hospital and the show was to be presented at St. Margaret's Hall.

### 25 Years Ago

Bonfires designed to take place on 5 November were mostly postponed owing to a deluge of rain. Over two inches of rain had fallen in Ilkley over the whole week.

Addingham Youth Centre although functioning for two years, had a large loan debt still to be paid off. A bring and buy sale was held in the High Primary School for this purpose, which made a profit of £40.

At the recommendation of the Ilkley Parks Superintendent it was decided that more shrubs should be planted in Ilkley's public gardens to ease the work of maintenance. In future this department was to have responsibility for the upkeep of the East Holmes playing fields, the Riverside Gardens and the Parish Church Yard in addition to their existing duties.

Members of Billy Smart's Circus took fun and thrills to the bedsides of children in Wharfedale Children's Hospital. Clowns proved to be the special attraction particularly when they were sitting by the little patients' bedsides instead of being shadowy figures on T.V. The circus performers had been invited by Otley and District Round Table to the hospital.

## REPRESENTATION ON HEALTH COUNCIL

A move for Parish Council representation on Community Health Councils is being recommended by the General Purposes Committee of Ilkley Parish Council.

A recommendation that the matter should be pursued by the South Pennine Branch of the Parish Councils' Association will come before Ilkley Parish Council for its approval on Monday night.

After the Airedale District Community Health Council 1978-79 report had been noted by the Council's Committee the Chairman, Cr. C. D. Poole reported that the point had been raised at a meeting of the South Pennine Branch that there was no representation on Community Health Councils at Parish Council level. It was felt there should be and members had been asked to raise the matter at their next Parish Council meeting. Steeton with Eastburn Parish Council had raised the matter originally but had now withdrawn from the Parish Councils' Association.

2 Nov 79

**OVER 3,000 AT  
SUCCESSFUL  
TRADES FAIR**

Over 3,000 adults and probably a thousand children attended the successful revival of the Ilkley Trades Fair last week. The event was such a success that already traders are enquiring about booking space for the next one, scheduled for 1981.

Mr. Tony Peel, President of Ilkley and District Chamber of Trade and Commerce, organisers of the Trades Fair, said response from the public had been tremendous and there had been a very favourable reaction from most of those who attended. Indeed, many patrons had commented on the "family party" atmosphere of the fair, which had catered for all tastes, he said.

Cr. John Senior, Lord Mayor of Bradford Metropolitan District, and Cr. Mrs. Mary Renton, Chairman of Ilkley Parish Council, had both thanked the exhibitors and public for the friendly way in which they had been received.

Mr. Peel paid tribute to Mr. Don Griffiths, Chairman of the Chambers Trades Fair Sub-Committee and his committee members for the many long hours they had put in with regard to organising the event.

Looking ahead, the next proposed Trades Fair, was scheduled for 1981, with 1980 being a very special year for the Black Hats v White Hats cricket match. Mr. Vince Dobson, as Chairman of that Sub-Committee, would in due course be announcing a spectacular programme for May Day, he added.

In the meantime, Mr. Peel would be grateful to receive any written comments from patrons relating to the Trades Fair, so that he could collate the general trend of opinion and in doing so, where necessary, restructure the 1981 Trades Fair.

Last week's event featured stands from 34 trade exhibitors, as well as special boxes for Ilkley Rotary Club, Good Neighbours Scheme, Amateur Operatic Society, Civic Society, Rotaract Club, Pre-School Playgroup, Wharfedale Lions Club, Leos Club.

Mr. Bert Hardisty won the prize for the best stand, with Powells of Ilkley second, Mortens third and Vincent Dobsons gaining a special commendation.

"Nothing is achieved without endeavour," said Mr. Peel, "and I promise visitors and the Ilkley community alike that members of Ilkley and District Chamber of Trade and Commerce will during the forthcoming months provide a service which will be unequalled in neighbouring towns and cities."

Family competition results at the Trades Fair were—

Wednesday: J. M. Hogarth, 3 Grove Avenue, Ilkley; Michael Thornton, The Butts, Railway Road, Ilkley; Deborah K. Clayton, 55 Grangefield Avenue, Burley.

Thursday: Mrs. F. Mattinson, 94 Tennyson Street, Guiseley; Mrs. M. Rushon, 94 Tennyson Street, Guiseley; P. M. Ansell, 25 St. Helens Way, Ilkley.

Friday: C. Twiss, 59 Ben Rhydding Road, Ilkley; Elizabeth M. Wade, 37 Grove Road, Ilkley; Mrs. Betty Roberts, 29 Bridge Lane, Ilkley.

The slogan hidden around the trade stands was "Shopping in Ilkley is Brightest and Best." 2 Nov 79

2 Nov 79

**Ilkley Boys Brigade In Founders Day Parade**



The Bradford and District Battalion of Boys Brigade held its annual Founders Day Parade in Ilkley on Sunday, with 123 boys, five staff sergeants and 44 officers

assembling in the central car park.

After a march of about twenty minutes they arrived at Ilkley Baptist Church, base of the First Ilkley Company,

where a service of thanksgiving was led by the Chaplain of the Ilkley Company, the Rev. A. K. Cook.

Picture shows members of the Ilkley Company before the parade. They are, from

left to right, Captain A. Thompson, Philip Thompson, Jimmy Termini, Trevor Atkinson, Mark Best, Peter Taylor, Alan Haresign, Matthew Ridley and Warrant Officer D. Illingworth.

**BEST WISHES FOR QUICK RECOVERY AS  
YVONNE COMES HOME**

Twenty one years old Yvonne Mysliwiec, the Ilkley girl who was brutally attacked has come home and this week has been making her first attempts to reply to some of her many well wishers.

Yvonne, a reporter with the Ilkley Gazette, was left with serious head injuries after crossing the railway footbridge between her home in Tivoli Place and the Il Travatore nightclub in Leeds Road. She was walking to the club when she was attacked.

Two weeks later after a three hour operation and many anxious hours for her recovery Yvonne was dis-

charged from Chapel Allerton Hospital, Leeds, last Thursday. During that time the whole of Ilkley wished Yvonne a speedy recovery and there has been a constant arrival at the hospital and now at her home of flowers, presents and get well cards from friends, Councillors, colleagues, the Local MP, Dr. Keith Hampson, busmen, and many others she has met through her work.

She has even had an offer of a holiday from the winner of the Miss Bradford World contest, Helen Hinchcliffe, of Ilkley. They met during the contest in which Yvonne came fourth.

Yvonne said this week: "I never appreciated now much I had until it was nearly gone. People have been so kind. They care for me and that makes me feel marvellous," said Yvonne.

Talking of her stay in hospital Yvonne said members of the staff were marvellous. "I felt guilty about all the cards and flowers that kept pouring in. They ran out of vases and space to accommodate all the cards but they were very patient.

"They also put up with me wanting all the windows open. I suppose the nurses must have been cold but I felt grateful to be alive. I

just wanted to feel the air on my face.

"I didn't care what the weather was like. I just wanted to see out and to take in all I had previously taken for granted."

Yvonne is striving to get back to a normal life and took her first walk with her mother around the block to try and get over the fear of going out.

"I shall be nervous of going out after dark and I am sure I shall be afraid of people behind me for a long time, but I can overcome all this, I think. I know I shall learn to trust again," said Yvonne.

• Yvonne is pictured with her mother and father.





# ABILITY TO RECRUIT STUDENTS VITAL TO SURVIVAL OF COLLEGE

The future survival of Ilkley College depends upon the ability of the College to recruit higher education students.

This comment was made by the Chairman of the Educational Services Committee of Bradford Metropolitan Council, Cr. Arthur in reply to questions about facilities at the College.

Cr. Mrs Birdsall asked if it was the intention to honour the pledge previously given that facilities equivalent to those on the Bingley site be provided at Ilkley if the Bingley site was disposed of?

"Are there any plans currently being prepared for such facilities," asked Mrs. Birdsall who said if there were not was the Chairman of the Educational Services Committee aware of the grave consequences for Ilkley College if those facilities were not provided at Ilkley immediately they ceased to exist at Bingley?

Replying Cr. Arthur said the Council included in the 1979-82 Three Year Plan a proposal to provide for the shortfall of accommodation at Ilkley College campus if and when disposal of Bingley college was affected. This was the Council's policy and it had not been altered.

Discussions were taking place between the Principal and his staff and officers of the Council to establish the precise requirements of the College. Those requirements might not best be met by a duplication of the facilities on the Bingley campus. The details of the College's requirements had not yet been finalised. Tentative consideration had been given to a suggestion that a sports hall could be provided on the Ilkley campus for joint college-public use. The Council was not committed to that course of action.

Cr. Arthur was aware of the consequences of the removal of specialist accommodation for performing arts and recreational studies. The future survival of Ilkley College depended upon the ability of the college to recruit higher education students.

The college's five year plan for higher education included B.Ed degrees (initial and inservice), both of which would depend to some extent on the availability of music and drama studies, a theatre and a gymnasium; and a BA degree with specialisms in performing and visual arts and recreational studies which again required similar accommodation. In July, 1979, 171 full time and 26 part time students were using visual arts, music, movement, drama and gymnasium accommodation. It was projected that by the 1982-83 academic year 236 full time equivalent students would require the accommodation. It was hoped that by 1982-83 the college would have a higher education student population of 978. Without the specialist accommodation the college could hope at best to recruit seventy five per cent of its target population of 1,000 students and under those circumstances the college could not remain viable, particularly because the Regional Staff Inspector had made it clear that there was no possibility of the college receiving approvals to mount courses in new areas in the foreseeable future, said Cr. Arthur.

2 Nov 79

## Evening session for Airport inquiry

A further evening session is planned to enable individuals to express their views at the public inquiry into the proposed main runway extension at Yeoman Airport.

This second special evening sitting will begin at 7 p.m. at Guiseley Town Hall on Wednesday next week, November 14. It will mark the resumption of the inquiry which, after almost three weeks' adjournment, will continue at the Town Hall Guiseley, at 10 a.m. on Thursday, November 15.

9 Nov 79

FRIDAY, 9 NOV. 1979

## ACROSS THE YEARS

### Moorland Sheep Ransack Ilkley Gardens

#### 100 Years Ago

The question of the regular ransacking of gardens in Ilkley by sheep from the moor was discussed at the monthly meeting of the Ilkley Local Board. Mr. Gaunt of Parish Ghyll Road said he occupied a house at a rent of over £60 per year and he had not a shred of a flower, shrub or vegetable left on his land. He described one night when he had returned home in evening dress from a concert in Bradford at 11 p.m. and he had had to spend three hours chasing half a dozen sheep out of his garden. Mr. Rhodes supported Mr. Gaunt and said that not only had his own garden been wrecked but five years growth of ivy had been eaten off the walls of his home. It was decided to call a special meeting to go into the whole matter.

The matter of the renovation of the Wesleyan Chapel at Addingham was being pushed forward rapidly, and a meeting was held in the schoolroom to further this purpose. It was proposed to raise the floor, replace the pulpit with a platform, and let more light and air to the gallery and erect a neat palisading to replace the old stone exterior.

#### 75 Years Ago

The Midland Railway Company were changing passengers to Ilkley on Sunday—from Menston and beyond—an extra 4d. to suit their own convenience in taking the trains round by way of Otley. Some paid the extra charge on demand at Ben Rhydding whilst others refused, and as no legal action was taken against the ones who refused it was assumed that the railway company had no right to charge the extra fare.

Novel entertainment was provided by a show at St. Margaret's Hall given by Mr. Reginald Wishart "The great mystifier and escapologist." Musical interludes in the nature of pianoforte solos were given by Mrs. H. E. Wade, of Ilkley.

At a tea and concert in aid of the organ fund of the Ilkley Primitive Methodist Chapel, the choir sang songs and anthems, and a quartette by Messrs. Woods and Briggs and Messrs. H. and W. Bradley also entertained. Mandoline duets were played by the Misses M. Swales and A. Jackson, and songs were rendered by Mrs. A. Jackson.

Mrs. H. Hey, Miss M. Swales and Mr. R. Bradley. The concert was presided over by Mr. F. E. Pearce.

#### 50 Years Ago

Charges for electricity in Ilkley were to be put on a new basis, with a charge of 3/- per quarter per lamp based on 85 per cent of the lamps on any one premises, plus one penny per unit up to 250 units, in any quarter and three farthings per unit beyond this. There was a proviso that no more than 25 per cent in any one quarter should be for lighting.

Rain had soaked all the bonfires laid for gunpowder plot celebrations in the town, but despite this they blazed all over the town. There was a big crowd present at a firework display organised by the Girl Guides and Scouts, where there was community singing at the close.

"The talkie of talkies" featuring Al Jolson in the "Singing Fool" was shown at the King's Hall picture house for a full week. It was claimed to be the most wonderful talking and singing film of all time.

#### 25 Years Ago

The 29th Battalion of the West Riding Home Guard whose headquarters were at Ilkley had a defence exercise Lt. Col. R. G. Laurence O.B.E.T.D. was the commanding officer. Other Senior officers included Major O. J. Firth of Ilkley, Major W. L. Prestwich, of Ilkley and Major H. F. Slack of Otley.

Mr. Jack Tipping of Little Lane had been meeting with considerable successes in the first stock car racing season to be held in this country. He built his own car from a 14.9 h.p. Ford and a Mercury engine which he called "Gravel Gertie." He captained Yorkshire against Lancashire and was in the North team against the South, and won each event.

A total of £4,400 was spent by Ilkley Golf Club on improvements during the 1953-4 year, reported Mr. J. P. Sater, hon. secretary in his report at the annual meeting. New steward's quarters had been built, and new kitchen equipment had been purchased, the bar had been reconstructed with the added comfort of new seating. Membership had increased from 339 to 346, with 179 full members, 53 country members, and 69 lady members.

## ILKLEY GIRL AT PALACE TO RECEIVE AWARD

Eighteen year old Louise Purcell, of Kings Road, Ilkley, attended Buckingham Palace with her father to receive the Duke of Edinburgh's Gold Award.



Louise worked for four years on the award while attending Notre Dame High School at Leeds, where she was a pupil until July of this year, obtaining the Bronze and Silver awards on the way.

She enjoyed taking part in the scheme, with the gold expedition taking her to Lourdes, where she helped the sick on a pilgrimage.

Louise is an active member of Ilkley Swimming Club and a member of the First Ben Rhydding Venture Scout Unit.

9 Nov 1979

## CASTLE ROAD

### "EYESORE" DISAPPEARS

The weed-ridden mound of soil in Castle Road has disappeared.

For that period it had been the subject of complaint and criticism particularly amongst those residents on Castle Road whose lounge windows overlooked the mound.

In a clean-up operation the whole of the weed-ridden area on the south side of the allotments field has been cleaned up. In addition half-a-dozen trees which spoiled the view from across the river for several of the residents in Castle Road have been felled.

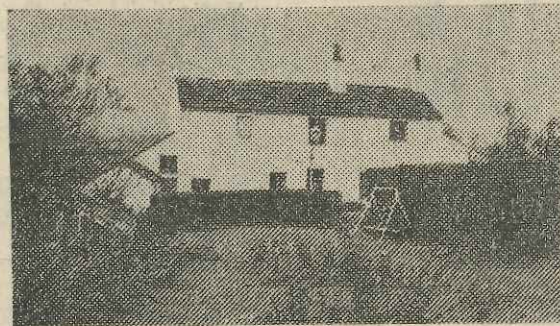
In a combined operation by a Bradford excavating firm and Bradford Metropolitan Council, the weed-ridden mound of soil, weeds nearly four feet high, and the trees were all levelled and the whole of the area has taken on a much smarter appearance particularly for the residents in Castle Road.

Mr. C. R. Rodwell, of Bradford Metropolitan Council, in charge of the developments of allotments on the Castle Road Field told the 'Gazette' this week that the mound of top soil was being spread out and used for soil for seven allotments which were set out near to the fence adjoining Castle Road. Some of that soil would also be used as a top soil for the five new allotments which had been "pegged out" at the Leeds Road end of the allotments field. Several hundreds of tons of extra top soil was also to be provided and spread on to all the new allotments.

Now the allotment tenant, in Castle Road will be hoping that the promise by Bradford Metropolitan Council in relation to the erection of protective fence along bottom side of the allotments will be met in the near future.

9 Nov 1979

## LOWER HANG GOOSE FARM, HEPPER WATSON ADDINGHAM MOOR, NR. ILKLEY 2 Nov 79



An interesting detached farmhouse (once a drovers inn) with all amenities beautifully situated in open countryside with long distance views over open farmland towards the Dales hills. Included with the property is 4.5 acres of grazing land immediately adjoining. The accommodation includes: Dining Hall, Drawing Room, Kitchen, side entrance. Two double Bedrooms, Dressing Room and a boxroom. Bathroom and w.c. Scope for extension if required. Stone outbuildings including workshop, store, stable and garaging for 2 cars. Large garden.

Viewing by appointment only please.  
Price £57,500. (ref: S.399)

Thorp Arch Trading Estate, Wetherby, and York.

9 Nov 79

# RIDING ASSOC. "MISREPRESENTED AND VILIFIED" IN BRIDLEWAY DISCUSSIONS, CLAIMS CHAIRMAN

Claims that Ilkley Riding Association has been "consistently misrepresented and vilified" during discussions over proposals to provide a bridle way across Ilkley Moor have been made by the Association's Chairman, Mr. K. Halstead.

He has made it clear that the Association feels there is little point in furthering discussions and that it wishes to withdraw from the position where they were prepared to co-operate in this matter.

His comments follow a decision by Ilkley Parish Council to support an alternative route for a bridle way which would take riders across the top of the moor instead of along the lower reaches—a route which has been much criticised by walkers and preservation societies.

No decision has yet been reached by Bradford Metropolitan Council which first put forward the original proposals last December and to which the alternative route by the Council for the Preservation of Rural England has been referred.

Mr. Halstead has told the Parish Council he wished to make several points on behalf of the Association whom he felt had been considerably misrepresented and vilified over the question of the bridle way.

Within the memory of some of the Parish Councillors of Ilkley, meetings were set up, at the behest of the then Ilkley Urban District Council to try to overcome the problem of riders and walkers using the same paths, said Mr. Halstead. At that time it was felt by the Council and by the Riding Association that it would be in the interests of both parties if one route across the lower edge of the moor be nominated as a bridle-path to solve the problem, he said.

"Since that time several proposals have been put forward by various parties and in every case there has always been an objection from some society or other. We now believe, as an association, that public opinion has been sufficiently misled so as to believe that in some way or other the Riding Association are pushing for rights to use the moor which they did not already possess. One would have imagined that, out of the thousand trails, tracks, footpaths and bridlepaths which intersect the moor, particularly on the lower reaches, that right-thinking involved parties could have seen the sense in separating riders from walkers and been able to come to some agreement," said Mr. Halstead.

## Vexed Questions

It was now obvious, went on Mr. Halstead that this would never be achieved and the Riding Association felt most strongly that, from a situation where they were prepared to co-operate with the Council and other interested parties to the maximum degree possible, in order to overcome what was a vexed question, they have consistently received a bad press and an image of being in some way divorced from the interests of the community.

"We now feel, therefore, that there seems to be little point in furthering this discussion and wish to withdraw from the position where we are prepared to co-operate in this matter.

"It seems a pity that a very few people have managed to create such an unwholesome atmosphere surrounding what could have been a scheme to benefit everyone in the area. The scheme proposed by the Council for the Preservation of Rural England does not in any way form a suitable alternative to the route proposed by the Countryside Officer, Mr. Morgan. It takes no cognisance of the fact that riders do move across the lower area of the moor and will continue to do so. Unfortunately, they will now continue to do so over a broad spectrum of the moor, instead of the one proposed bridlepath and the old problem will be exacerbated.

"As an association we feel distressed that, in trying to co-operate with the Council, we have received individually and as an association such a bad public image and such a high degree of animosity from some members of the public," said Mr. Halstead.

Commenting on the Council's hope for a swift and satisfactory conclusion to the question of a bridlepath, Mr. Halstead said this was obviously only aimed at providing a swift and satisfactory conclusion for the minute number of people who objected. "We therefore, wish to withdraw from any future discussions and to re-establish our rights to use the moor for riding purposes," commented Mr. Halstead.

Chairman to the Council, Cr. Mrs. M. Renton thought Mr. Halstead's letter should be accepted and could see little to be gained by discussing the matter further unless any councillor wished to do so.

"We have fallen over backwards to co-operate with the horse riders on the moor," said Cr. W. Forrest who thought horses should not be allowed to use the same paths as those used by walkers. "I think the scheme we have put forward is very good and I am surprised that Mr. Halstead should write a letter like that," said Cr. Forrest.

The Council agreed that a copy of Mr. Halstead's letter should be sent to Mr. Morgan, the Countryside Officer.

## ACROSS THE YEARS 16 Nov 79 FEWER DEATHS DURING POOR SUMMER

### 100 Years Ago

A Medical Officer of Health report put before Ilkley Local Board in November, 1879 showed there had been 29 births over the past three months, eight marriages and eleven deaths. Of the 29 births, 20 were male and only 9 female one female being born out of wedlock. None of the deaths occurred to persons under 15 years of age, and he said that affections of the nervous system accounted for more than half the total number of deaths registered. The mortality rate was "inconsiderable" and was attributed to the abundance of rain and low temperatures in the summer months.

A Fewston carrier appeared before Otley Petty Sessions charged with riding without reins, after having previously been warned about this. He denied the charge and said he was arranging goods in the back of his cart. The policeman said the cart had been empty and the defendant was fined 27. 6d. and costs.

An Ilkley milk vendor was charged with drunkenness in charge of a horse which he pulled round and around in circles in Brook Street. His wife had to lead him home incapable, and he was fined 10s. and costs.

### 75 Years Ago

At a meeting of the Ilkley Education Sub-Committee it was resolved that the summer holiday at Burley School should be reduced from a month to three weeks. Applications for increases in salaries had been received from many teachers, but these were to be held in abeyance until the County Education Committee issued their new scale of salaries for teachers.

The Ilkley Brass Band promoted a series of weekly Cinderella dances to take place in the Assembly Rooms. Members of the band played for the dancing under the leadership of Mr. F. Berry. The M.C. was Mr. Oliver Munford.

To clear a debt of £100 on their land and buildings Ben Rhydding Wesleyan Church held a successful Sale of Work. The opening ceremony was conducted by Mrs. R. S. Anderson of Southport, with the Rev. Dr. Maggs presiding. The sale was to last for three days, and the church buildings were specially decorated for the occasion.

### 50 Years Ago

In spite of drenching weather and high winds "Poppy Day" in the Ilkley district reached another record of success with a total of over £246.

Wharfedale escaped the worst of a severe gale on Armistice Day, but many really fine trees were blown down at Denton. Throughout the entire week the river was running high and the stepping stones had been covered with water.

At a meeting of the Wharfedale Board of Guardians it was decided to provide the inmates of New Hall work house with turkeys for Christmas as well as the usual extras. The "usual extras" consisted of a barrel of beer and a bottle of rum for use in the Christmas puddings. There was to be an extra allowance for all persons in receipt of "out-relief" during wharfedale and New Year Ceeks of 4/- to adults and 2/-

There was an excellent attendance at an Armistice Ball held in the Lecture Hall, Burley. The White Rose Synopators provided the music.

### 25 Years Ago

Members of the 6th Ilkley Scout Group who hauled winter fuel supplies across the fields to the studio of Nesfield artist, Mr. Herbert Royle, were rewarded by the gift of one of the artist's pictures of a snow scene from Nesfield, which he suggested could be sold for their group funds. It was displayed in a shop window and members of the public were invited to make their bids for it.

The guest of honour at the annual dinner of the Wharfedale Cricket League was Mr. Norman W. D. Yardley, captain of the Yorkshire Cricket Club and England Test selector. The toast to the Yorkshire County Cricket Club was proposed by Mr. James F. Stott, vice-president of the Otley D.P. and E. Club.

Middleton Hospital advertised for staff, and offered Ward Sisters (S.R.N.) £425 and student nurses a training allowance of £230 with deductions of between £108 and £145 per annum if resident.

Correspondence

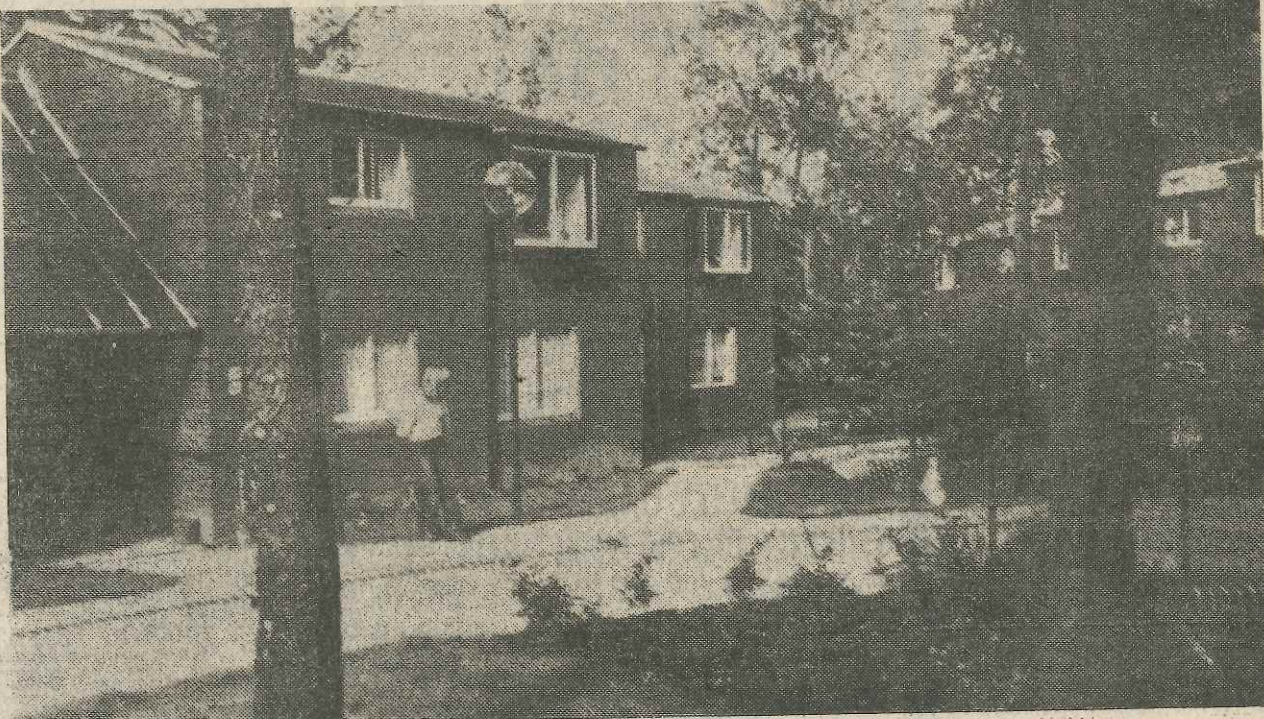
Ben Rhydding Development Awarded Design Medal

16 Nov 79

Horrors of Cambodia

Sir,—I wonder how many of us watched John Pilger's television report on the horrors of Cambodia. I for one was deeply shocked to find that our Government supports a regime similar to that which existed in Hitler's Germany. I have written to our M.P. urging for a change in Government Policy so that Britain may take an active part in giving aid to the poor starving people that remain. I recommend that others who feel as I should do the same. The doctor who spoke in the film documentary only gave us six months to save 2-5 million people so we must act now. Other ways to help are by direct donations to the address given at the end of the programme "Cambodia Fund, P.O. Box 96, Birmingham, or by supporting OXFAM who are the only organisation in Britain helping.

ILKLEY RATEPAYER



A housing scheme at Ben Rhydding is one of only two in Yorkshire to be awarded a medal in the Good Design in Housing Awards for 1979, a scheme sponsored annually by the Department of the Environment in collaboration with the Royal Institute of British Architects. The Valley Lodge development at Valley Drive was the medal winner in the public sector old people's dwellings section for Yorkshire and Humberside. Medals are only

awarded to schemes judged to be of sufficiently high standard, while others which do not qualify for a medal may be highly commended. Valley Lodge is described by the assessors as "A cleanly designed scheme in a delightful landscaped setting which, together with an existing stream, has been carefully preserved. The dwellings are mostly small units arranged to give maximum enjoyment of outlook while avoiding steps to the

lower access points. "Detailing is generally of a high order with a particularly fine floorscape. The open plan arrangement of the modest interiors at first floor level has a friendly scale as a result of sloping ceilings with exposed purlins. Entry points to individual units form a subtle transition from outside to inside. "The community room appears to be seldom used, but the whole development is well managed and main-

tained. The Valley Lodge scheme was designed by John McNeil of York University Design Unit. It was commissioned by Greendown Housing Association Ltd. and built by W.A. Bushell and Co. Ltd. About 50 of the award winning schemes throughout England are featured in a major exhibition at the Housing Information Centre, The Headrow, Leeds, until 26 November

Station 'Improvement'

Sir, Are we ever going to see an end to the so called 'improvements' to the station? Now the winter weather has started there is very little glass in the canopy over the bus stops, and the gutters drip on to the waiting passengers. Passengers alighting from buses near the "Wool Box" have to either risk walking in front of the parked buses, or else climb over a heap of mud to get out of the station forecourt. There has been much angry criticism in the town of the money wasted on the station project, and in many respects the facilities are worse than they ever were.

I heard on the radio that a Japanese delegation are in this country at the moment to view the efficiency and running of the British Rail system. I would be very interested to hear what they make of it, perhaps they are intending to use this country as a prime example of what NOT to do.

DISGUSTED

'Poor Old Ilkley Moor'

Sir,—How sorry I was to see poor old Ilkley Moor in such a sorry state when I visited Ilkley recently. The little children could not play on it at all, because the footpaths were deep mires in many places. The path around the tarn is unsafe for children (a notice must be put up for safety, forbidding children to go there) because it now appears to be a racetrack for horses. Also, even our ancient monuments, the cup and ring marked rocks, have become chipped, where they lie near footpaths (horses again?). What a shame that Ilkley's children cannot enjoy the childhood I had 30 years ago. Presumably it is important for today's youth to learn expensive hobbies and amusements — merely walking does not use up enough of the world's resources fast enough. Certainly, walking is no longer possible on Ilkley Moor—riding, orienteering, climbing yes—but there should be notices warning people against walking there.

Sheila Parkin.  
31 Brandling Place South,  
Jesmond,  
Newcastle Upon Tyne.

RECONSTRUCTED ROMAN KITCHEN DISPLAY TO MARK 19th CENTENARY OF THE OCCUPATION

The reconstruction of a typical home kitchen of the period when Ilkley was occupied by the Romans is on display in the window of the Skipton Building Society office on The Grove, Ilkley. The display mounted by the Olicana Museum and Historical Society is part of a programme to mark the 19th centenary of the Roman occupation of Ilkley. Neither the Romans nor their mercenaries would take kindly to the bleak northern climate so they built a fort not only to protect themselves from attack but to make life more comfortable. The Romans knew about central heating, good drainage and

how to store food and their kitchens — not really all that different from those of today — would be living-in-kitchens so that while the food was cooking the housewife would fill in time by spinning wool direct from the fleece. Eating habits were much the same as they are today. Mrs. Roman housewife would take her basket and shop in the market, but was restricted to what was in season and grown locally. A list of fruit and vegetables available would include: grapes, olives, beans, peas, cabbage, cucumber, onions, garlic, fennel, lettuce, radishes, apples, peaches, pears, apricots, figs, melons, and plums.

The Roman farmer kept cattle, sheep, goats and chickens so that milk, cheese, eggs and meat were available. He also grew corn but the housewife had to grind this herself in a quern for flour to bake bread or cakes. A quern is on display and it will be noticed that it must have been quite hard to get enough flour for even one loaf of bread. The Romans also had their fish market well organised and ate mullet, tunny, turbot, anchovy, etc. Three meals a day were eaten with breakfast being (as it is very often now) a hasty affair, often just a piece of bread and honey or salt,

dipped in wine or eaten with a handful of olives and raisins. Lunch consisted of eggs or meat, with salad or vegetables, fruit and cheese. Dinner was the main meal and two typical menus can be seen in the window display. The Romans were not great meat eaters and soldiers thought themselves hard done by when they had to go on a meat ration when the corn ran out. Extravagances like peacock, lark, tropical fruits and so on were reserved for the rich man's table. Fingers were freely used at the table. Spoons might be used, knives were rarely and forks were unknown.



# ILKLEY SOCIAL SECURITY OFFICE CLOSES DOWN TODAY AFTER THIRTY ONE YEARS

16 Nov 79

The Ilkley office of the Department of Health and Social Security, first opened in August, 1948, closed its doors for the last time today (Friday).

The Department's decision to close the office was reached after the number of callers had fallen to a level when it was not considered that continued opening was justified.

During the past twelve months up to August a total of 939 people called at the Ilkley office, open one day a week, an average of about 18 callers per day. Of those, six used the premises as no more than a convenient alternative to the postal service by simply handing in documents, etc. Of the twelve callers who actually sought information the Department's analysis suggested that most of the enquiries were of a fairly non-urgent nature which could be handled at least as effectively by correspondence or telephone without consequential hardship.

When Ilkley Parish Council expressed concern about the Department's proposals the Regional Controller said it was not their intention to close any of their public caller offices while the demands made upon them justified their retention.

"I can assure you that our concern to meet the needs of the public is in no way diminished and I am confident that our decision will not reduce our capability to fulfil these obligations," he said. It would be the Department's intention to provide a comprehensive home visiting service in the area for those who required it.

The Department pointed out that people in the Ilkley area wishing to transact Social Security business after the Ilkley office had closed down should get in touch with the Department's office at Worth House, Worth Way, Keighley, but Ilkley Parish Council wondered if residents could use the facilities offered at Otley instead of having to travel to the Keighley office.

In reply the Department has stated that the Otley office was a caller enquiry office offering the same range of services as the one at Ilkley and available to supply general advice and claims together with appropriate leaflets and claim forms. Help with completion of claim forms would also be given where necessary. Details enquiry on a particular case would necessitate telephone contact with the main local office where the individual's casepapers were held.

The Otley office situated in Charles Street, in the same premises as the Unemployment Benefit office was open three days a week as follows: Monday 9.30 am to 12.30 pm and 1.30 pm to 3.30 pm; Wednesday 9.30 am to 12.30 pm; Friday 9.30 pm to 12.30 pm and 1.30 pm to 3.30 pm.

Commenting on the Department's future arrangements for Ilkley the Vice-Chairman to the Council, Cr. K. G. Johnson said what appeared to be lacking were facilities for personal interviews. Someone wishing to apply for supplementary benefit would have to be interviewed and this meant they would have to travel to Keighley. He felt some consideration should be given to those people who would be required at the moment to make a most inconvenient journey in order that an interview could take place.

The first Ilkley office of the Department of Health and Social Security was opened in Brook Street in August 1948 and was known as the "National Insurance Office."

This office was closed in May, 1965 and transferred to a room in the Lecture Hall, Riding Road, where it became a caller office.

## CASH CRISIS CLOSES DOWN BURLEY HOTEL

The Flying Pizzatoo hotel and restaurant at Burley has had to close down, with the loss of 37 jobs, due to serious cash difficulties. Creditors of the company will meet at Leeds on Monday.

The Flying Pizzatoo opened in 1977, with accommodation for about 100 diners in the downstairs restaurant and over 100 more to eat and dance upstairs.

Mr. Franco Pardini, proprietor, blamed last winter's atrocious weather as the main reason for the financial difficulties. He said the restaurant relied heavily on people who arrived by car, and the heavy snow had caused hundreds of cancellations at short notice.

About £40,000 had been spent on the upstairs banqueting hall in readiness for the winter trade, but for much of the winter Burley was virtually cut off or the car park was inaccessible.

Negotiations for a possible take-over are under way at the moment.

## OBSTRUCTION OF TRAFFIC IN ILKLEY STREETS

Complaints about obstructions to traffic in Ilkley streets should be reported to the Police immediately so that some action could be taken, Ilkley and District Road Safety Committee was told.

Cr. Mrs. P. Glover said traffic had been held up twice recently in Wells Road, which was a one-way street with parking allowed on both sides. On the first occasion a lorry had stopped in the middle of the road, blocking it completely, while beer barrels were unloaded, and on the second a plumbers lorry had been parked with copper pipes extending from the back across the road.

Mr. W. G. Cox pointed out that they were very lucky to have the ease of parking in Ilkley and had to offset it against occasional inconvenience like this.

A police representative said the public should contact the police straight away so that the obstruction could be cleared.

## BOX TREE AWARD

The Box Tree at Ilkley was the only restaurant to have been awarded one of the Golden Jubilee awards of the British Tourist Authority.

The awards were given to organisations which the British Tourist Authority felt had made an important contribution towards tourism in Britain over the last fifty years.

The Box Tree Restaurant at Ilkley has been awarded a double star for outstanding cooking in the latest Egon Ronay guide published this week.

The guide praises the Box Tree's "immaculate decor and well balanced menu".

## WATER AUTHORITY TO SPEND £3M. ON LOCAL SCHEMES

Two schemes costing £774,000 to improve water supplies and sewage treatment in the Ilkley area have been sanctioned by the Policy and Resources Committee of the Yorkshire Water Authority.

The major project is to deal with the problem of dirty drinking water and £587,000 will be spent over 15 months beginning in July next year.

Mr. Bill Jollans, the Director of Operations, said that at present much of the water was not being treated properly and the complaints from the Meston area alone equalled one a day. The present treatment plants were inadequate and provided only single treatment.

He said it was proposed to lay extra water mains so that water treated to a higher standard at the Reva and Graincliffe works could be distributed to more places in the Ilkley area. The existing single treatment works would eventually be abandoned.

Mr. Jollans said the Ben Rhydding sewage treatment works looked neat and tidy, but it was grossly overloaded. The effluent which was discharged into the Wharfe was not of the standard required for a river from which drinking water was abstracted further downstream.

The scheme was for some reconstruction of the works with some new equipment at a cost of £187,000. It was intended to begin in April next year and on completion after ten months the final effluent should be improved and sludge disposal would be more efficient.

## INQUEST RESUMED ON THREE KILLED AT ILKLEY

*16 Nov. 79*  
The inquest on two Ilkley girls and their grandmother who were killed by the children's mother was resumed in full this week.

The children's mother was sent to Broadmoor in July for an indefinite period after admitting the manslaughter of the three.

The inquest was on Mrs. Ethel Van Hamm (65), formerly of Hall Road, Colne, and her two grand-daughters, Fiona (6) and Gaye (5) who were all found strangled at the girls' home in Wilton Road, Ilkley, in February.

At the trial of the girls' mother, Mrs. Elaine Wilkinson (33), at York Crown Court the counsel Mr. Harry Ognall referred to her mental illness.

When the inquest re-opened the Bradford Coroner, Mr. James Turnbull explained why he had taken the unusual steps of resuming the inquest after criminal proceedings had taken place. There were some aspects of the case which should be investigated further, he said.

He also wanted to give those who thought they may be subject to criticism the opportunity of stating the facts as they knew them.

Mrs. Wilkinson was admitted to Scalebor Park Hospital, Burley, in February as an informal patient and was allowed home at weekends.

Mrs. Holland said Mrs. Wilkinson's notes said she had thought about killing herself and her two children.

A neighbour of Mrs. Wilkinson, Mr. Harry White describing how the discovery was made of the bodies said he became concerned because he had heard no noise from the flat for four days. He went to the flat and Mrs. Wilkinson answered the door in her dressing gown.

"I asked about the children and she answered in a way which made me convinced something had happened. The manner in which she said it I can only describe as rather chilling," he said.

"She said: 'The children are all right now' It almost confirmed for me what we had suspected — something serious had happened.

"I asked about her mother and she said 'She is alright too, now'."

Mr. White said the woman seemed in a dazed condition. He was convinced something serious had happened.

The inquest continues.

## Wreath Laying Ceremony At Ilkley Cenotaph 16 Nov 79



Representatives of local organisations including Ilkley Royal British Legion, Scouts Sea Scouts, Guides, Police and Ilkley Air Training Corps laid wreaths at Ilkley Cenotaph in the Memorial Gardens, The Grove, in a festival of Remembrance on Sunday afternoon. Cr. Mrs. M. Renton, Chair-

man, laid a wreath on behalf of Ilkley Parish Council and Cr. Mrs. J. Lightband laid one on behalf of Bradford Metropolitan District Council.

An innovation this year was a guard of honour at the cenotaph from 11.00 a.m. until the service began at 3.00 p.m. by cadets from Ilkley Air

Training Corps, who observed a silence before starting and then presented arms for the "Last Post" at the end of the service.

The contingent from First Ilkley Sea Scouts had their flag draped in black in tribute to Lord Mountbatten, who was Commodore of Sea Scouts

from 1947 until his death this year.

The short service was conducted by Canon Tom H. Levesley of St Margaret's Church, Ilkley, and music was provided by the Hall Royd Methodist Band from Shipley.

## ACROSS THE YEARS 23 Nov 79

### Celebrations Mark Renovation Of Middleton Lodge Chapel

#### 100 Years Ago

The private chapel at Middleton Lodge, which for many years had been thrown open for the use of people in Ilkley, had been re-decorated and otherwise renovated and special services were held to celebrate this. In the morning mass was sung by Rev. Canon Vavasour of Ripon.

Two poachers were taken to court from Addingham and charged with "trespass in search of game." They had been found on land bordering on to Addingham Road near the old Toll Bar belonging to William Middleton Esq., of Middleton Lodge by his gamekeeper Barnabus Hodgson with a gun in their possession. The charge was proven, and the men were fined £1 and 30s. each with costs.

#### 75 Years Ago

The annual prize distribution at Ilkley Grammar School took place in the school hall, when the former headmaster, Mr. Frederic Swann was invited to distribute the prizes. The proceedings were presided over by Mr. B. M. Hood (vice-chairman of the Board of Governors) who publicly welcomed the new Headmaster, Mr. C. W. Atkinson and set forward the aim of the school to turn out "good men as opposed to great men." There were at that time 71 boys at the school, with nine boarders, and only 42 boys residents of Ilkley. The Old Boys' Prize for personal character combined with scholastic attainments was awarded to H. T. Bates.

The King and Queen of Portugal were guests of honour at a distinguished house party, at Chatsworth, but owing to a violent snowstorm they were unable to visit Bolton Abbey.

D. McGuire, Brook Street, Ilkley, advertised winter coats and costumes from 10s. 11d. to 45s. and costumes made to order from two guineas.

#### 50 Years Ago

The annual meeting of Ilkley Cricket Club was a scene of mutual congratulations after a record season. A number of important changes of officers were made, with Mr. Maurice Gaunt as President, Mr. George Vallender as Hon. Secretary and Mr. Alan Sowden as first team Captain.

The first team had had a marvellous year, reaching

second position in the Yorkshire County table, qualifying to play in the semi-final, and winning the Naylor-Jennings Cup for the Wharfedale and Airedale section of the Yorkshire Council.

Dr. H. T. Bates, the Ilkley Medical Officer of Health, reported diphtheria had broken out again in the district. He advised parents to seek medical advice at the first sign of sore throats in any of their children as two deaths had taken place amongst many mild cases.

#### 25 Years Ago

An offer by the West Yorkshire Road Car Company to allow their garage in South Hawksworth Street, Ilkley to be converted into a central covered bus station for the town was being considered by Ilkley Council. The company had indicated that it was not prepared to go along with the scheme to build a bus station on the New Brook Street.

The first annual general meeting of the Ilkley Flower Show Society declared a surplus of £15 which under the circumstances was considered to be highly creditable. The entry fee of 1/6 was considered to be most satisfactory. There had been 75 classes in the first show, and despite a disappointing summer for horticulture there had been a first class showing.

A farewell party was held to mark the closure of the Day Nursery at Burley which had served the village for twelve years. Miss W. G. Gibson was presented with a cigarette case and a card inscribed with the names of past and present children that came under her care. The Medical Officer of Health, Dr. Proctor was given a book token by the staff, and his assistant Dr. M. A. Hillas was presented with a bouquet.

## Top Award For Ilkley Restaurant 30 Nov 79



Food lovers in Britain owe a dept of gratitude to restaurateurs Malcolm Reid and Colin Long, owners of the Box Tree, Ilkley, for their "pioneering efforts".

So say the Automobile Association's 1980 Hotels and Restaurants Guide which, for the eighth successive year, awards its top food rating—three rosettes—to the Box Tree.

It keeps the Ilkley restaurant among an elite five with the AA's number one listing—two of them in London one in Berkshire and

the fourth in Scotland.

The latest award, which was presented to Malcolm Reid and Colin Long by the AA's Assistant Managing Director, Mr. Simon Dyer, also earned them special mention in the new guide's feature section on well-trained professionals.

It describes the Box Tree—which at first served afternoon teas only—as "arguably the best restaurant outside London and Bray."

Of the owners, who entered the restaurant indus-

try from other walks of life, it says: "It is rare for two men to teach themselves to cook with such a sense of gastronomic art."

"Food lovers in Britain owe them a dept of gratitude for their pioneering efforts. They speak light-heartedly of their early difficulties but they must have had a hard time."

Pictured from left to right are Mr. Simon Dyer, AA Assistant Managing Director, Mr. Malcolm Reid and Mr. Colin Long.